



CITY of NOVI CITY COUNCIL

Agenda Item K
November 25, 2013

SUBJECT: Approval to award an amendment to the engineering services agreement with Spalding DeDecker Associates for additional construction phase engineering services related to the 2013 Capital Preventative Maintenance Program – Major Roads, in the amount of \$5,760.

SUBMITTING DEPARTMENT: Department of Public Services, Engineering Division ^{KZ} BCL

CITY MANAGER APPROVAL: 

EXPENDITURE REQUIRED	\$ 5,760
AMOUNT BUDGETED	\$ 458,959 (includes FY12-13 rollover funds)
LINE ITEM NUMBER	202-202.00-866.500

BACKGROUND INFORMATION:

Meadowbrook Road from Nine Mile Road to Ten Mile Road was selected for rehabilitation as part of the 2013 CPM program. Novi's preventative maintenance program, in conjunction with the other road programs, is intended to result in an overall improvement in the quality of the City's roadways and increase the overall PASER rating for the roadway network. Preventative maintenance typically addresses discrete area or short segments of streets containing cracks or pavement defects. The streets receiving capital preventative maintenance generally have PASER ratings of 4 through 6, which is indicative of pavement in fair overall condition. Meadowbrook Road was selected because the concrete pavement had performed very well since it was constructed in 1972, but had some defects that required attention. The goal of the project was to increase the useful life of the road by replacing joints that were no longer serviceable, and by replacing discrete sections of concrete that were no longer structurally sound. The construction contract and construction phase engineering services for this project were awarded on July 8, 2013.

Once construction started, staff identified more joints and concrete sections that required maintenance within the project limits. Staff decided it would be more beneficial to address these areas as part of the project during active construction to avoid another project in the same location at a later date that would again inconvenience motorists and residents. The additional construction work required 9 additional crew days to be used for inspection by the consultant on this project, Spalding DeDecker Associates. Crew days are used for inspection of the project at a cost of \$640 per day according to Exhibit B of the constant's agreement, resulting in an increase of \$5,760 for construction phase engineering services for this project.

The contractor has completed all work on this project. A change order for the construction contract appears elsewhere on this agenda.

RECOMMENDED ACTION: Approval to award an amendment to the engineering services agreement with Spalding DeDecker Associates for additional construction phase engineering services related to the 2013 Capital Preventative Maintenance Program – Major Roads, in the amount of \$5,760.

	1	2	Y	N
Mayor Gatt				
Mayor Pro Tem Staudt				
Council Member Casey				
Council Member Fischer				

	1	2	Y	N
Council Member Markham				
Council Member Mutch				
Council Member Wrobel				

Authorization for Additional Services #1

Project: **Engineering Services for
2013 Major Roads CPM Program**

Date: 10/24/13

Description of Additional Services

Construction Inspection for removal and replacement of additional transverse joints and longitudinal joints and panels. Also, construction inspection of removal and replacement of Village Lake Road approach.

Original scope of work:

[Provide itemized list of tasks related to scope change, and provide cost associated with each task]

- Contract amount of Crew Days 15 at \$640 = \$9,600

Amount authorized for original scope: \$9,600

Proposed scope of work:

[Provide itemized list of tasks related to scope change, and provide cost associated with each task]

- Construction Inspection for removal and replacement of additional transverse joints and longitudinal joints and panels. Also, construction inspection of removal and replacement of Village Lake Road approach.
- 9 additional crew days at \$640 = \$5,760

Proposed budget increase amount for new scope: \$5,760

Based on the revised scope of services, we request authorization for an increase of 9 Crew Days at \$640 = \$5,760 to the amount authorized under the previous scope of services.

[Spalding DeDecker, Assoc.]

Requested by:



Christopher Robbins, PE, SDA

Date:

11-12-13

CITY OF NOVI


Reviewed by:


Brian Coburn, Engineering Manager

Date:

11/13/13

Approved by:


Rob Hayes, Director of Public Services

Date:

11/14/13

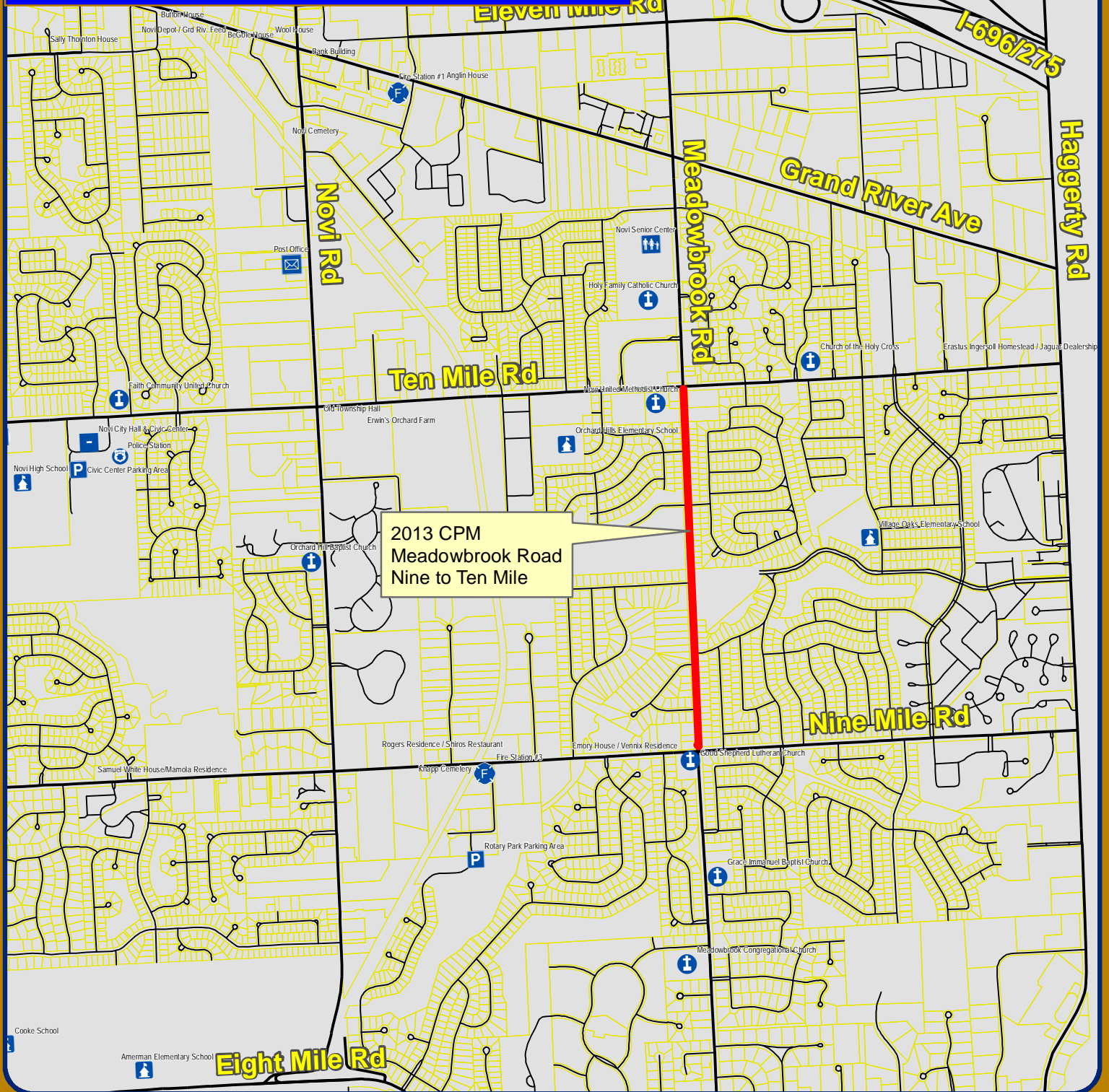
Approved by:

Sue Morianti, Purchasing Manager

Date:

2013 Capital Preventative Maintenance Major Roads

Location Map



2013 CPM
Meadowbrook Road
Nine to Ten Mile

Map Author: Croy
Date: 11/15/12
Project: 2013 CPM Majors
Version #: v1.0

MAP INTERPRETATION NOTICE

Map information depicted is not intended to replace or substitute for any official or primary source. This map was intended to meet National Map Accuracy Standards and use the most recent, accurate sources available to the people of the City of Novi. Boundary measurements and area calculations are approximate and should not be construed as survey measurements performed by a licensed Michigan Surveyor as defined in Michigan Public Act 132 of 1970 as amended. Please contact the City GIS Manager to confirm source and accuracy information related to this map.



1 inch = 2,000 feet



City of Novi
Engineering Division
Department of Public Services
26300 Lee BeGole Drive
Novi, MI 48375
cityofnovi.org