

MEMORANDUM



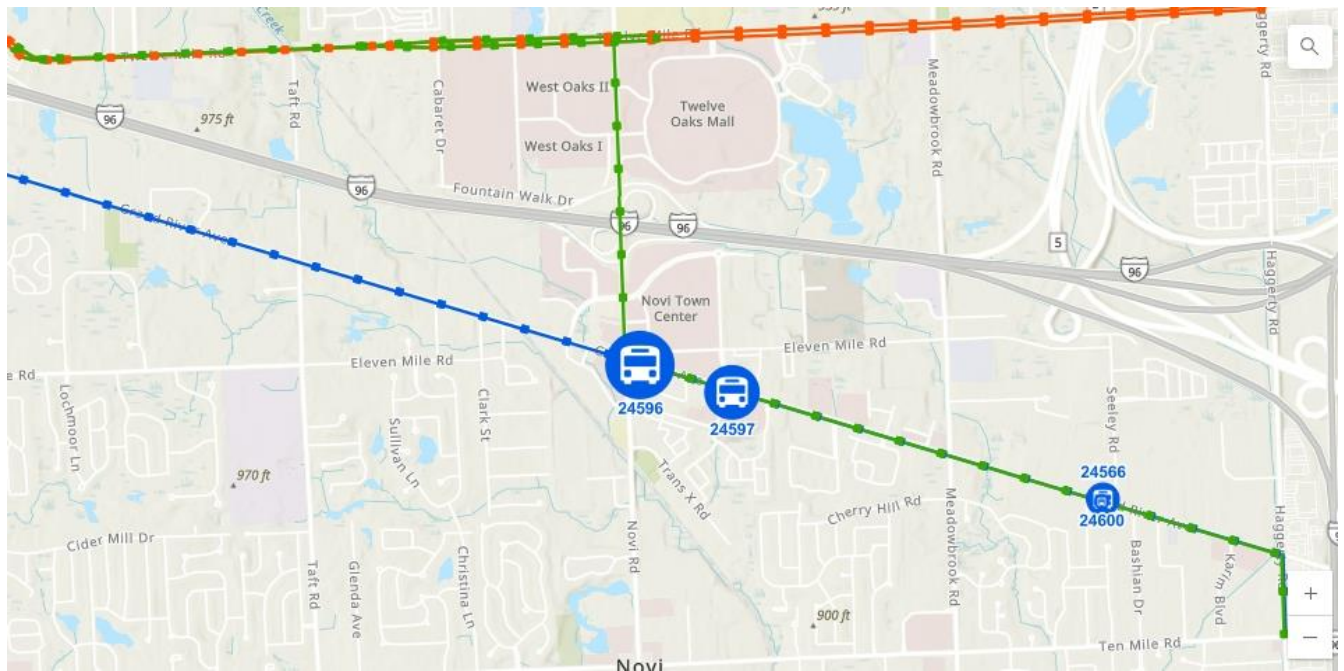
TO: VICTOR CARDENAS, CITY MANAGER
FROM: REGINA SWICK, GRADUATE MANAGEMENT ANALYST
SUBJECT: BUS SHELTER OPTIONS AND ESTIMATES
DATE: SEPTEMBER 16, 2025

This memo serves as a follow-up to the May 13, 2025, CIA meeting concerning the bus stops under consideration for future shelters. We have obtained preliminary cost estimates from Brasco International, a recognized partner of the Suburban Mobility Authority for Regional Transportation (SMART).

SMART has identified two bus stops within the district, Grand River/Novi Road (24596) and Grand River/Main Street (24597), that are recommended for shelter installation. (It is not yet clear if shelters are needed on both sides of the road.)

In addition, according to the development agreement with the new Kia dealership, the developer has agreed to install shelters at Grand River/Seeley Road (24600) and Grand River/Seeley Road (24566).

Map of Bus Stop Locations Recommended for Future Shelters



With these locations identified, the next step is to evaluate potential shelter designs and associated costs. To guide this process, SMART has developed a comprehensive [bus stop design manual](#). This manual emphasizes safety, accessibility, and consistency, including:

1. Safety for all
2. Consideration of all street users
3. Consistency and barrier-free access
4. Unified street, vehicle, and platform design
5. Equitable, ADA-compliant universal design
6. Integration into the surrounding streetscape

Background materials from the last meeting, including the SMART manual, design concepts, and the “Best Practices in Bus Stop Shelters” article, are available [here](#).

I contacted two Michigan companies, Brasco and Duo-Gard, regarding bus shelter options and pricing. I shared the example from the City of Abbotsford as a reference point for a more “polished” model. Duo-Gard did not respond. However, Sean Loewe from Brasco followed up with a phone call. He explained that fully custom shelters typically cost two to three times more than adapting existing stock models with size, feature, and color customizations. Afterward, Ian Riley at Brasco continued with the estimates and provided images and quotes for two shelter options, The Eclipse Arch, which was mentioned in the prior information packet, and The Slimline Hip Roof model.

Keep in mind, there are other models available that could also be a good fit for what The City and CIP are looking for as far as aesthetics.

Please note that the Slimline Hip, as optioned, is \$1,975 less expensive than the Eclipse Arch. Both quotes include a 6' bench, providing sufficient space for wheelchair accessibility and ensuring ADA compliance.

City of Abbotsford, CA



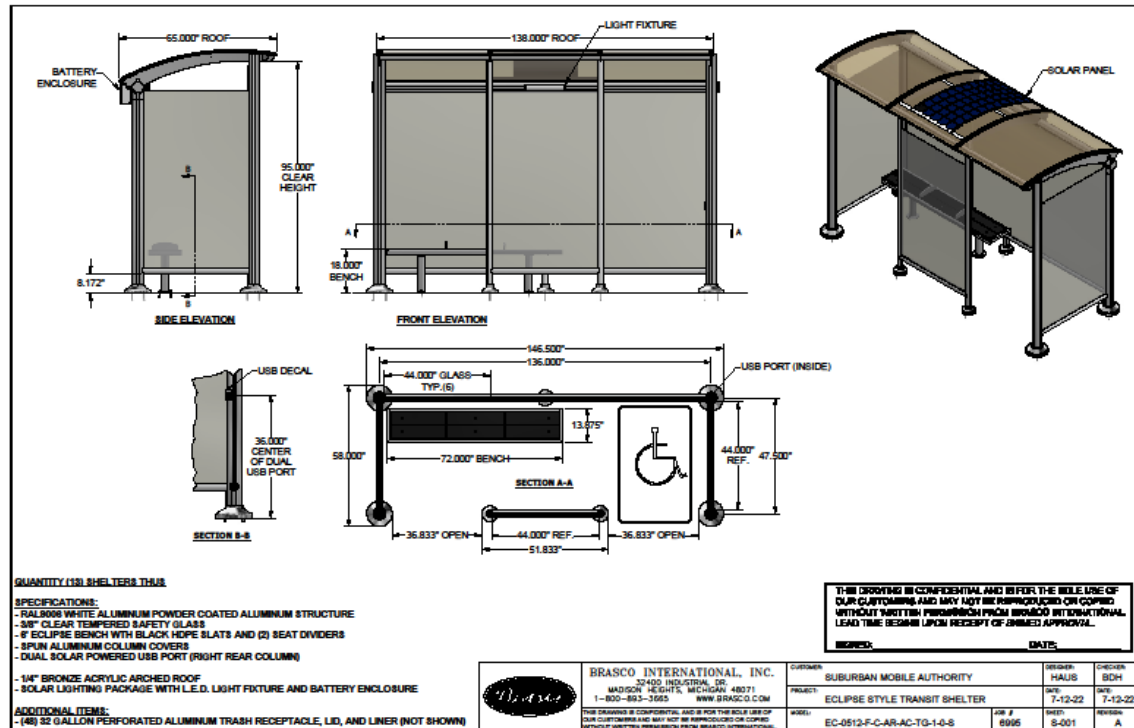
ECLIPSE ARCH - SMART –

– [Eclipse Arch product Flyer](#)

(IMAGE FROM WEBSITE SHOWING POSSIBLE OPTION COLORS)



The Eclipse shelters used by S.M.A.R.T. are 5' x 12' and include solar lighting, solar USB ports, an Eclipse bench, and a trash receptacle. Below are the drawing and quote I received from Brasco.



Amie May

08/29/22



QUOTE

Quote Number: 062625R1
 Quote Date: June 26, 2025
 Quote Expiration: 30 Days from Quote Date
 Return to: inley@brasco.com

Quoted for:
 City of Novi
 Regina Swick
 248-347-0451
RSwick@cityofnovi.org

PREPARED BY	PROJECT NAME	PAYMENT TERMS (WITH APPROVED CREDIT)	LEAD TIME
Ian Riley	Eclipse Arched Series Structure	NET 30	± 24-26 Weeks from Approvals

QTY	ITEM	DESCRIPTION	UNIT PRICE	TOTAL
1	EC-0512-F-C-AR-AC-TG-0-0-0	5' x 12' Eclipse Series Aluminum Structure Four-Sided; Full Rear and Side Walls with Front-Centered Windscreen and Two ADA Openings Powder Coat Painted Aluminum Finish - RAL TBD Arched Roof with Blade Rafter and Bronze, Clear, or White Acrylic Glazing 3/8" Clear Tempered Safety Glass Wall Panels	\$11,950	\$11,950
Option	Anchor Bolt Covers	Spun Escutcheon Covers for Columns and Sill Support	\$375	Not Included
Option	Solar Lighting	Solar Lighting Package with Solar Panel, Batteries, Solar Controller, Vented Enclosure, and 6-Watt LED Light	\$1,750	Not Included
Option	Solar USB	Solar Powered, Dual Slot USB Charging Port Integrated Into Rear Column of Shelter (Solar Lighting Package Required)	\$825	Not Included
Option	BE-EC-6-H-2-2-0	6' Eclipse Series Bench with HDPE Slats and Two Seat Dividers	\$800	Not Included
Option	Display Case	24" x 36" Display Case with Grommet Attachment Through Glass	\$650	Not Included
Subtotal				\$11,950
Freight				Included
Total				\$11,950

This is a quotation on the above products listed and is subject to the conditions noted below. Prices are subject to change after quote expiration date. Payment terms are subject to change per Brasco's Financial Credit Approval Process. Credit card payments are subject to a 3% processing fee. Brasco accepts Visa, MasterCard, and American Express.

*Structural Engineering with Stamped Drawings and Structural Calculations are not included in this quotation and are an additional \$1,475, per shelter type, if required.
 *Concrete Pad Design and Analysis, if needed, is an additional \$750. Hard Copies of Calculations, if needed, are an addition at \$100 per copy.

Offloading shipments is the responsibility of the customer. Please note that a forklift with 8' forks is required unless otherwise noted in writing.

Shelters are not shipped fully assembled. Assembly and Installation Required. All anchoring hardware is included.

Lead time begins after all approvals including drawings, color selections, applicable deposits, etc.

Signature of Acceptance*	Date
Print Name	Title

*The above prices, specifications and conditions are satisfactory and are hereby accepted. Brasco International, Inc. is authorized to proceed with the supply of products as noted. Brasco International, Inc. is a vendor and not a contractor or subcontractor. Brasco International, Inc. is not subject to any payment retainage or liquidated damages. All Brasco standard terms and conditions of sale apply.

We Thank You For Your Consideration



AMERICAN MADE. AMERICAN TRUSTED. SINCE 1993.

32400 INDUSTRIAL DRIVE, MADISON HEIGHTS, MI 48071



SLIMLINE HIP

[Slimline Hip Product Flyer](#)



[Powder Coat Colors](#) - Any one of these colors can be selected at no additional charge. The powder coat color that would be like the Slimline photo above, would be the Brasco Bronze.

[Bench Material Options](#) - The bench listed on your Slimline Hip quote is for the material shown in the photo above, from Abbotsford. This material is HDPE (High-Density Polyethylene). This bench material is available in four different colors: Cedar, Grey, Brown, or Black).



QUOTE

Quote Number: 062625R2
Quote Date: June 26, 2025
Quote Expiration: 30 Days from Quote Date
Return to: iniley@brasco.com

Quoted for:

City of Novi
Regina Swick
248-347-0451
RSwick@cityofnovi.org

PREPARED BY	PROJECT NAME	PAYMENT TERMS (WITH APPROVED CREDIT)	LEAD TIME
Ian Riley	Eclipse Arched Series Structure	NET 30	± 24-26 Weeks from Approvals

QTY	ITEM	DESCRIPTION	UNIT PRICE	TOTAL
1	SL-0512-F-0-HI-AL-TG-0-0-0	5' x 12' Slimline Series Aluminum Structure Three-Sided; Full Rear and Side Walls with Open Front Dark Bronze or Clear Anodized Aluminum Finish Standing Seam Aluminum Hip Roof with 2.5" Fascia and Integral Gutter 1/4" Clear Tempered Safety Glass Wall Panels	\$9,975	\$9,975
Option	Solar Lighting	Solar Lighting Package with Solar Panel, Batteries, Solar Controller, Vented Enclosure, and 5-Watt LED Light	\$1,750	Not Included
Option	Solar USB	Solar Powered, Dual Slot USB Charging Port Integrated Into Rear Column of Shelter (Solar Lighting Package Required)	\$825	Not Included
Option	BE-WM-9-H-2-0-1	9' Wall-Mount Bench with HDPE Slats and Backrest	\$900	Not Included
Option	Display Case	Display Case with Piano Hinge Door, Clear Acrylic Cover, and Tamper-Resistant Hardware for Changing Media	\$475	Not Included
Option	Powder Coat	Powder Coat Painted Finish, in Lieu of Anodized	\$1,100	Not Included
			Subtotal	\$9,975
			Freight	Included
			Total	\$9,975

This is a quotation on the above products listed and is subject to the conditions noted below. Prices are subject to change after quote expiration date. Payment terms are subject to change per Brasco's Financial Credit Approval Process. Credit card payments are subject to a 3% processing fee. Brasco accepts Visa, MasterCard, and American Express.

*Structural Engineering with Stamped Drawings and Structural Calculations are not included in this quotation and are an additional \$1,475, per shelter type, if required.

*Concrete Pad Design and Analysis, if needed, is an additional \$750. Hard Copies of Calculations, if needed, are an addition at \$100 per copy.

Offloading shipments is the responsibility of the customer. Please note that a forklift with 8' forks is required unless otherwise noted in writing.

Shelters are not shipped fully assembled. Assembly and Installation Required. All anchoring hardware is included.

Lead time begins after all approvals including drawings, color selections, applicable deposits, etc.

Signature of Acceptance*

Date

Print Name

Title

*The above prices, specifications and conditions are satisfactory and are hereby accepted. Brasco International, Inc. is authorized to proceed with the supply of products as noted. Brasco International, Inc. is a vendor and not a contractor or subcontractor. Brasco International, Inc. is not subject to any payment retainage or liquidated damages. All Brasco standard terms and conditions of sale apply.

We Thank You For Your Consideration



AMERICAN MADE. AMERICAN TRUSTED. SINCE 1993.

32400 INDUSTRIAL DRIVE, MADISON HEIGHTS, MI 48071



MEMORANDUM



TO: VICTOR CARDENAS, CITY MANAGER
FROM: REGINA SWICK, GRADUATE MANAGEMENT ANALYST
SUBJECT: SMART RIDERSHIP UPDATE
DATE: SEPTEMBER 18, 2025

The purpose of this memo is to provide an update on the community's use of the fixed-route bus service via SMART.

SMART

We continue to work with Oakland County and SMART to obtain more detailed data, such as per-stop ridership and riders per hour, that will support our transit planning and service evaluation. We remain committed to pursuing consistent access to these data points to inform and improve our planning efforts.

Since the last quarter, SMART routes serving our area saw a **notable increase of 5,598 riders**, bringing total Q2 ridership to **17,193**. This reflects continued growth in demand and is higher than the same period last year, when Q2 2024 totaled **15,725 riders** across the three routes. The 305 Grand River and 740 Twelve Mile routes drove most of the growth, with increases of 3,050 and 2,605 riders, respectively. These routes now average a combined **189 boardings per day**, highlighting their critical role in local and regional connectivity.

Given the unusually high totals this quarter, we plan to follow up with SMART to confirm the accuracy of the data and ensure consistency in reporting going forward. Accurate tracking is essential as we align transit service levels with community needs and evaluate potential service enhancements.

SMART Ridership Data: Q2, 2025

Date Range	2025 Q2	91	Days	13	16.5 hours a day
ROUTE	ROUTE NAME	RIDERS	Riders Per Day		Riders per hour
305	Grand River	11,043	121		7.35
740	Twelve Mile	5,908	65		3.93
805	Farmington Park and Ride	242	3		0.16
Total		17,193	189		11.45

Route		This Qtr	Change	Per	Per	Per
		Riders	Since Last Q	Day	Week	Hour
305	Grand River	11,043	3,050	121	849.46	7.35
740	Twelve Mile	5,908	2,605	65	454.46	3.93
805	Grand River Park	242	-57	3	18.62	0.16
Total		17,193	5,598	189	1322.54	11.45

SMART Ridership Q4 2023 – Q2 2025

Grand River		12 Mile	Park & Ride
	Route 305	Route 740	Route 805
2023 Q4	6394	4168	311
2024 Q1	8172	3765	96
2024 Q2	9745	5684	296
2024 Q3	8092	4739	244
2024 Q4	9667	3438	285
2025 Q1	7993	3303	299
2025 Q2	11043	5908	242
2025 Q3			
2025 Q4			

