

## **Attachment A**

Supplemental Tables for Chapter 2 and 4

**TABLE 2.3: Previous Years Completed Non-Motorized Improvements (CITY BUILT)**

Segment Item #	Section #	Type	Side of Street/ Other	Location	From	To	Segment Length (ft.)
<sup>1</sup> Segments completed by the City of Novi only, not including developer completed segments							
<b>Legend</b> S= 6 ft. sidewalk P= 8 ft. pathway C=crossing RT=regional/recreational trail							
<b>2019-20 Completed Non-Motorized Improvements</b>							
52c (part)	20	S	South	<b>Eleven Mile</b>	Bosco Park entrance		375
53	20	S	West	<b>Beck Road</b>	Bosco Park (City Project)		1150
5132	20	C	N/S	<b>Beck/Eleven Mile</b>	Bosco Park project		
102b (part)	30	P	North	<b>Nine Mile</b>	ITC Pathway		487
98b	30	P	North	<b>Nine Mile</b>	ITC Pathway		830
5027	17, 20	C	N/S	<b>Eleven Mile</b>	ITC Trail crossing		
5028	20, 29	C	N/S	<b>Ten Mile</b>	ITC Trail crossing		
5029	29	C	N/S	<b>Nine Mile</b>	ITC Trail crossing		
5030	30	C	E/W	<b>Garfield</b>	ITC Trail crossing		
4002, 4004	20, 29	RT		<b>ITC Pathway</b>	9 Mile to 11 Mile		10,423
N/A	N/A	B	<b>Boardwalk Repairs and Reconstruction</b>		Citywide		
<b>2019-20 Total</b>							<b>13,265</b>
<b>2018-19 Completed Non-Motorized Improvements</b>							
9a	4	S	South	<b>Pontiac Trail</b>	Wedgewood	West Park	2,438
9B	4	S	South	<b>Pontiac Trail</b>	Beck Road	Wedgewood	2,662
5038	4	C		<b>Pontiac Trail</b>	Mid-Block Crossing and Geisler School		
5062	4	C	South	<b>Pontiac Trail</b>	Beck		
N/A	15, 16, 21, 22	Bike Lanes	Both	<b>Taft</b>	Ten Mile Road	Grand River	
5019	21	C	W/E	<b>Taft</b>	S of Jacob Dr	Novi Woods	
N/A	N/A	B	<b>Boardwalk Repairs and Reconstruction</b>		Citywide		
<b>Total</b>							<b>5,100</b>
<b>2017-2018 Completed Non-Motorized Improvements</b>							
Part 67	23	P	South	<b>Grand River</b>	Fountain Park	Huntley Manor	167
4064	31	PR	ITC Sports Park		ITC	Eight Mile	3,259
105 Part	31	P	North	<b>Eight Mile</b>	Garfield	Napier	5,200
5	3	S	South	<b>Fourteen Mile</b>	Beach Walk	East Lake Drive	535
N/A	N/A	B	<b>Boardwalk Repairs and Reconstruction</b>		Citywide		

**Total 9,161**

**2016-17 Completed Non-Motorized Improvements**

5037	21, 22	Mid bloc		<b>Taft Road</b>	between south of Jacob/Taft Knolls		
10	4	S	east	<b>Beck</b>	K&S Plaza		180
109	32	P	north	<b>Eight Mile</b>	Garfield	Beck	2,888
NA	24	S	West/East	<b>Karim Blvd</b>	Ten Mile	Grand River	-2,363
129	1	S	South	<b>Fourteen Mile</b>	Haverhill Farms	Maples of Novi	600
4013	17	RT	N/A	<b>Medilodge Providence</b>	Medilodge	Beck	3,203
4003	31	RT	N/A	<b>ITC Corridor</b>	N. of ITC Sports Center Park	Garfield	5,800

**Total 15,034**

**2015-16 Completed Non-Motorized Improvements**

1b	1	S	South	<b>Fourteen Mile</b>	M-5	Haverhill Farms	867
69	23	S	south	<b>Eleven Mile</b>	Town Center	Meadowbrook	3,500
5016	28,29	Mid bloc		<b>Beck Road</b>	Between Nine & Ten Mile		

**Total 4,367**

**2014-15 Completed Non-Motorized Improvements**

27	14	P	north	<b>Eleven Mile</b>	Pinnacle	Town Center	3,500
89	26	P	east	<b>Novi Rd.</b>	Ten Mile	Ice Arena	500
76	24	P	north	<b>Grand River</b>	Seeley	Haggerty	200
5016	28	C			Beck & White Pines/Cheltenham		
5033	2	C			Meadowbrook & Bridge St		
5065	2	C			Twelve Mile & Meadowbrook north		
4036	2	NBD	<b>Hickory Woods</b>	Novi Road		East Lake	1,025
9079	2	NBD	<b>New Ct</b>	East Lake	School		296

**Total 5,521**

**2013-14 Completed Non-Motorized Improvements**

16	11	P	south	<b>Thirteen Mile</b>	Sunshine	Holmes	275
12 part	9	S	north	<b>Twelve Mile</b>	West Park	Liberty Park	335
24	13	S	east	<b>Meadowbrook</b>	Bridge	Eleven Mile	700
73	24	S	east	<b>Meadowbrook</b>	Eleven Mile	Grand River	600
4342	13	RT	regional	<b>Meadowbrook</b>	Twelve Mile	Meadowbrook Business Park	2,240
4349	13	RT	regional	<b>Meadowbrook</b>	Metro trail	Meadowbrook Park	1,560
4350	13	RT	regional	<b>Meadowbrook</b>	Meadowbrook Park frontage		800
5154	0	C		<b>Nine &amp; Haggerty</b>	NW to NE		crossing
5009		C			Haggerty and Villagewood		crossing

5054	3	C		<b>Wixom &amp; Glenwood or Deerfield</b>	mid-block crossing and signal project		crossing
89	26	P	east	<b>Novi Rd</b>	Ten Mile	Ice Arena	500
145	23	S	north	<b>Ten Mile</b>	Supplier Investment Co	RR	220
<b>Total</b>							<b>7,230</b>
<b>2012-13 Completed Non-Motorized Improvements</b>							
92	27	S	west	<b>Novi Rd.</b>	Ten Mile	Nine Mile	2,135
36	16	P	west	<b>Taft</b>	Eleven Mile	Andes	495
144	23	P	west	<b>Meadowbrook</b>	Grand River	Cherry Hill	700
145 part	23	S	north	<b>Ten Mile</b>	Catherine Ind. Park	RR	705
4019	25	RT	regional	<b>Brookfarm Park</b>	Ripple Creek	Village Oaks Elem	633
5004		C			Nine Mile and Heatherbrae		
5007	24	C	mid-block	<b>Grand River</b>	Seeley	Joseph	crossing
5014	21	C	bike signs	<b>Beck</b>	Cidermill		crossing
5034	31	C	mid-block	<b>Eight Mile</b>	Community Sports Park	N to S	crossing
5035	31	C	mid-block	<b>Eight Mile</b>	Garfield	N to S	crossing
5143	32	C	crosswalks & signals	<b>Beck</b>	Eight Mile		crossing
<b>Total</b>							<b>4,668</b>
<b>2011-12 Completed Non-Motorized Improvements</b>							
145b	23	S	north	<b>Ten Mile</b>	RR	Brookhaven	225
65	23	P	east	<b>Novi Rd.</b>	Grand River	Ten Mile	3,500
61	22	S	west	<b>Novi Rd.</b>	Cemetery	Pine Ridge Center	3,600
32c	15	S	west	<b>Novi Rd.</b>	West Oaks	N side I-96	876
5007	24	C	striping & signs	<b>Grand River</b>	Seeley	Joseph	crossing
5043	36	C	mid-block	<b>Nine Mile</b>	Sunrise		crossing
<b>Total</b>							<b>8,201</b>
<b>2010-11 Completed Non-Motorized Improvements</b>							
83	25	S	north	<b>Nine Mile</b>	Meadowbrook	Haggerty	3,800
15	11	S	south	<b>Thirteen Mile</b>	Novi Rd.	Old Novi Rd.	350
5044	22	C			Novi at Post Office		crossing
146	11	C	west	<b>Old Novi</b>	South Lake	crossing	crossing
<b>Total</b>							<b>4,150</b>
<b>2009-10 Completed Non-Motorized Improvements</b>							
71	23	S	north	<b>Ten Mile</b>	Hampton Hill	Brookhaven	822
139	25	S	east	<b>Willowbrook</b>	Oaktree	Guilford	400
141	24	C	crossing	<b>Ten Mile</b>	Nilan	SW to NW	crossing
82C	25	S	west	<b>Haggerty</b>	Ten Mile	Dunkin Donuts	220
140	23	C	crossing	<b>Hampton Hill</b>	Ten Mile	NE to NW	crossing
123a	1	RT	regional	<b>M-5 Extension</b>	Fourteen Mile	Thirteen Mile	5,280
<b>Total</b>							<b>6,722</b>
<b>2008-09 Completed Non-Motorized Improvements</b>							
59	22	P	south	<b>Eleven Mile</b>	Taft	Cedar Spring Estates	1,300

125	15	S	west	<b>Clark</b>	Eleven Mile	Grand River	205
75 part	24	P	north	<b>Grand River</b>	Meadowbrook	Seeley	310
80A	24	S	north	<b>Ten Mile</b>	Meadowbrook	Haggerty	411
82A	25	S	west	<b>Haggerty</b>	Dunkin Doughnuts	Oak Ridge Place	1,180
60A	22	P	south	<b>Eleven Mile</b>	Clark	Cedar Spring Estates	300
136	21	S	west	<b>Bramblewood</b>	Cidermill	subdivision	210
63	22	S	north	<b>Ten Mile</b>	Wildcat	Taft	1,580
91	26	P	south	<b>Ten Mile</b>	Meadowbrook	Orchard Hills North	800
96	28	P	south	<b>Ten Mile</b>	Beck	Broadmoor Park	250
95	28	S	east	<b>Beck</b>	Ten Mile	Baker	300
	36	S	south	<b>Orchard Hills Place</b>	Haggerty	west	375
54, 55 part	20, 29	P	all	<b>Ten &amp; Beck legs</b>			910
<b>Total</b>							<b>8,131</b>

#### 2007-08 Completed Non-Motorized Improvements

57	21	S	north	<b>Ten Mile</b>	Roma ridge	Homestead	770
85	26	P	west	<b>Meadowbrook</b>	Ten Mile	Mallot	1,050
86	26	P	west	<b>Meadowbrook</b>	Chattman	Nine Mile	2,025
94	28	S	north	<b>Nine Mile</b>	Taft	Beck	640
117	35	P	west	<b>Meadowbrook</b>	Mission Pines	Mirabella Estates	450
118	35	P	west	<b>Meadowbrook</b>	Mirabella Estates	Eight Mile	480
<b>Total</b>							<b>5,415</b>

#### 2006-07 Completed Non-Motorized Improvements

42	17	S	north	<b>Eleven Mile</b>	Novi Middle School	Beck	3,700
56	21	P	south	<b>Eleven Mile</b>	Beck	Taft	1,700
<b>Total</b>							<b>5,400</b>


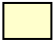
**TABLE 4.2: Proposed Off-Road Recreational Pathways and On-Road Regional Pathway**

No Mo Phase=: Former Top 20=0, Initial=1, Major Corridor=2, Neighborhood Connector=3

Surface: C=concrete, A=asphalt, D=dirt

Classification: L=local, R=regional, P=park

PR=Planned Regional; PP=Planned Paved; PF= Planned Foot Trail; OR=On-Road Regional; DP=Dirt to be paved

 Scheduled Segment  CIP Budget Year

Segment Item #	Section #	No Mo Phase	Type	Location	From / To	Length (ft.)	Width (ft.)	Surface	Classification	CIP Budget Year or Scheduled Segment Notes
<b>Off-Road Trails &amp; Paths</b>										
4014	17	3	PP	Wildlife Woods Park	ITC to Wixom	3,393	10	A	P	TAP Grant Awarded; expected 2021
4077	23	1	PP	Main St path	Capitol to Cherry Hill	779	10	A	P	
4296	27	0	PP	Civic Center	Ten Mile to Novi Way	420	5	C	P	was seg 127A
4295	27	0	PP	Civic Center/ Power Park	Novi Way to Power Park play ground	676	5	C	P	was seg 127B
4030	26	1	PP	Orchard Hills West	Mallot to Chattman	860	10	A	L	NC-3
4010	3	2	PR	Lakeshore Park	Parking lot to 12 1/2	3,513	10	A	L	
4011	3	2	PR	Lakeshore Park	West Park to parking lot	5,759	10	A	R	
4012	15	2	PP	I-96	RR to Meadowbrook	9,677	10	A	L	
4020	25	2	PP	Village Wood Lake	Meadowbrook to Village Wood	1,147	10	A	L	CIP
4022	27	2	PP	Power Park	Taft to existing path	1,772	10	A	P	
4023	27	2	PP	Power Park	Jonathan to park path	1,079	10	A	P	
4028	17	2	PP	Beck to ITC	ITC to Cheltenham	1,878	10	A	L	
4037	26	2	PP	Orchard Hills West	Meadowbrook to Balcombe	1,804	10	A	L	
4039	26	2	PP	Novi Ridge Orchard Hills	Balcombe to RR	1,068	10	A	L	
4040	26	2	PP	Ice Arena	RR to River Oaks	1,540	10	A	L	
4049	4	2	PR	Beck North	Spring Lake to West Park	4,209	10	A	R	
4050	4	2	PR	The Springs Apartments	Fireside to Beck North	1,256	10	A	R	
4006	17	3	PP	ITC Corridor	Grand River to 12 Mile	773	10	A	R	
4015	29	3	PP	Nottingham Woods	Woodworth to ITC	1,777	10	A	L	
4016	20	3	PP	Mockingbird	Sandpiper to ITC	557	10	A	L	
4017	22	3	PP	East of Taft Rd.	Kerri to Taft a	1,590	10	A	L	


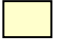
**TABLE 4.2: Proposed Off-Road Recreational Pathways and On-Road Regional Pathway**

No Mo Phase=: Former Top 20=0, Initial=1, Major Corridor=2, Neighborhood Connector=3

Surface: C=concrete, A=asphalt, D=dirt

Classification: L=local, R=regional, P=park

PR=Planned Regional; PP=Planned Paved; PF= Planned Foot Trail; OR=On-Road Regional; DP=Dirt to be paved

 Scheduled Segment       CIP Budget Year

Segment Item #	Section #	No Mo Phase	Type	Location	From / To	Length (ft.)	Width (ft.)	Surface	Classification	CIP Budget Year or Scheduled Segment Notes
4018	22	3	PP	Cedar Springs	Kerri to Taft b	312	10	A	L	
4021	26	3	PP	River Oaks	Portage Way east boundary	353	10	A	L	
4024	27	3	PP	Dunbarton Pines	Midway to Power Park	2,002	10	A	L	
4025	11	3	PP	Tollgate Farms	Steinbeck to 12 Mile	4,407	10	A	L	
4026	21	3	PP	Yorkshire to Taft Rd	Emerald Forest to Taft	767	10	A	L	
4027	35	3	PP	Chase to Novi Rd.	Novi to Asbury	306	10	A	L	
4031	2	3	PP	Maples Chateau Estates	Independence to La Roi	1,270	10	A	L	
4033	27	3	PP	Orchard Ridge Arrowon	Greening to Algonquin	787	10	A	L	
4035	26	3	PP	Whispering Meadows Orchard Hill	Sovoio to Orchard Hills	1,324	10	A	L	
4038	27	3	PP	Arrowon Pines	Algonquin to Mystic Forest	135	10	A	L	
4041	26	3	PP	Orchard Hill	Tammera to Aspen	578	10	A	L	
4042	25	3	PP	Willowbrook	Le Bost to Park	324	10	A	L	
4044	36	3	PP	Haverhill Maples	Collingdale to Kingsley	2,807	10	A	L	
4045	19	3	PP	Knightsbridge Old Dutch	Victoria to Island Lake	2,832	10	A	L	
4046	22	3	PP	Churchill to Clark	Clark to Thatcher	147	10	A	L	
4047	15	3	PP	CSX	under 96	403	10	A	L	
4048	15	3	PP	I-96	Taft to RR	2,065	10	A	L	
4051	11	3	PP	Tollgate Woods	Steinbeck to west	164	10	A	L	
4052	11	3	PP	Tollgate Woods to Vista	Steinbeck to Sandstone	646	10	A	L	
4053	21	3	PP	Walden Simmons Orchard	Arcadia to Cidermill	1,137	10	A	L	
4054	22	3	PP	Legacy Park	10 Mile to Laurel	2,766	10	A	L	
4055	22	3	PP	Churchill to Novi Rd	Thatcher to Novi	1,624	10	A	L	
4063	16	3	PP	Taft Rd	GR to 96	1,373	10	A	L	

**TABLE 4.2: Proposed Off-Road Recreational Pathways and On-Road Regional Pathway**

No Mo Phase=: Former Top 20=0, Initial=1, Major Corridor=2, Neighborhood Connector=3

Surface: C=concrete, A=asphalt, D=dirt

Classification: L=local, R=regional, P=park

PR=Planned Regional; PP=Planned Paved; PF= Planned Foot Trail; OR=On-Road Regional; DP=Dirt to be paved

Scheduled Segment      CIP Budget Year

Segment Item #	Section #	No Mo Phase	Type	Location	From / To	Length (ft.)	Width (ft.)	Surface	Classification	CIP Budget Year or Scheduled Segment Notes
4116	4	3	PR	Portsmouth	Pontiac Trail to Spring Lake	1,198	8	A	R	
4198	30	3	PP	Singh Trail	10 to 9 mile	10,106	10	A	L	
<b>Off-Road Trails &amp; Paths Total</b>						<b>85,360</b>				
<b>Planned On-Road Regional</b>										
4340	12	2	OR	Thirteen Mile S. side	M-5 to Meadowbrook	2,817	10	A	R	Metro Connector Phase 2
4348	16	3	OR	Beck E. side	GR north 250 ft	250	10	A	R	
4346	17	3	OR	Beck E. side	Providence to Grand River	2,200	10	A	R	
4347	9, 16	3	OR	Beck E. side & 12 Mile S. side	Bank, I-96, West Park	4,488	10	A	R	was seg 151 & 161
<b>Planned On-Road Regional Total</b>						<b>9,755</b>				
<b>Dirt Trails to be Paved</b>										
4297	27	2	DP	Power Park		1,185	10	A	P	
4298	27	2	OR	Power Park		853	10	A	P	
4299	35	3	OR	Rotary Park		3,294	10	A	P	
4300	35	3	OR	Chase Farms		596	10	A	P	
4301	35	3	OR	Rotary Park		2,577	10	A	P	
4302	35	3	OR	Chase Farms		2,831	10	A	P	
4303	35	3	OR	Rotary Park		750	10	A	P	
<b>Dirt Trails To Be Paved Total</b>						<b>12,086</b>				

**TABLE 4.3: Proposed Crossings**

Crossing Item #	No Mo Phase	Proposed	Location	Notes
5131	0	ramps crosswalks	Twelve Mile & Haggerty	NW to NE, NW to SW & SW to SE previously identified in PSPAP
5133	0	ramps crosswalks	Wixom & Eleven Mile	Safe Routes to School project 2021
5142	0	ramps crosswalks	Ten Mile & Churchill	NW to SW & NE to SE previously identified in PSPAP with ADA



**TABLE 4.3: Proposed Crossings**

Crossing Item #	No Mo Phase	Proposed	Location	Notes
5059	1	ramps cross signals	M-5 & Fourteen Mile west	SW to SE with pathway seg 1
5060	1	ramps cross signals	M-5 & Fourteen Mile east	SW to SE with pathway seg 1; (NE to SE to Commerce completed 2020 – private dev.)
5061	1	crosswalk & signals	Haggerty & JR	NW to NE with seg 25
5064	1	ramps crosswalk	Twelve Mile & Meadowbrook south	SW-NW w/path seg 30
5001	2	mid-block	Novi & Algonquin	signage, ramps and crosswalk with neighborhood connector route seg 9067 mid-block crossing with road project
5012	2	mid-block	Meadowbrook north of Chattman	with local off road path seg 3020 & 3037
5039	2	bike crossing signs	Twelve Mile & West Park	with regional trail seg 122d
5048	2	mid-block	Taft & White Pines	signage, ramps and crosswalk with neighborhood connector route seg 9006 mid-block crossing with road project
5056	2	NW to SW & NE to SE	West Park & West	NW- SW w/regional seg 3049 NE-SE w/path seg 8
5002	3	mid-block	Nine Mile west of Center	signage, ramps and crosswalk with neighborhood connector route seg 9128 mid-block crossing with road project
5003	3	mid-block	Nine Mile & Ennishore	signage, ramps and crosswalk with local path seg 3034 or neighborhood connector route seg 9058 mid-block crossing with road project
5005	3	mid-block	Ten Mile west of Ripple Creek	with neighborhood connector route seg 9124
5006	3	mid-block	Ten Mile & Hampton Hill	with neighborhood connector route seg 9007 & 9070
5008	3	crosswalk & signs	Thirteen & Plateau	with neighborhood connector route 9052
5010	3	mid-block	Meadowbrook & Marks	signage, ramps and crosswalk and crosswalk with neighborhood connector route seg 9043 or
5011	3	mid-block	Novi & Galway	with neighborhood connector route seg 9071
5013	3	ramps signs	Nine Mile & Singh	with foot trail seg 3001
5015	3	mid-block	Wixom & Delmont	with neighborhood connector route seg 9016
5017	3	mid-block	Taft & Galway	signage, ramps and crosswalk with neighborhood connector route seg 9046 mid-block crossing with road project
5018	3	mid-block	Taft & Addington	signage, ramps and crosswalk with local off-road path seg 3022 mid-block crossing with road project
5020	3	ramps cross signs	West Park & Bristol	with neighborhood connector route signage and crosswalk

**TABLE 4.3: Proposed Crossings**

Crossing Item #	No Mo Phase	Proposed	Location	Notes
5021	3	mid-block	Nine Mile & Darcey	signage, ramps and crosswalks with neighborhood connector route seg 9046 mid-block crossing with road project
5022	3	mid-block	Ten Mile & Simmons	with neighborhood connector route seg 9020
5023	3	mid-block	Fourteen Mile & Kingswood	with road project
5025	3	ramps cross signals	Twelve Mile & Twelve Oaks	with local off road trail seg 3025
5031	3	mid-block crossing	Twelve Mile & ITC path	with regional trail segment 3006
5032	3	mid-block crossing	Grand River & ITC path	with regional trail segment 3006
5036	3	ramps crosswalk	Eleven Mile & Arcadia	Safe Routes to School project 2021
5041	3	mid-block	Grand River & Fountain Park	with road project
5042	3	mid-block	Grand River west of Karim	with road project
5045	3	mid-block	Taft north of Byrne	with road project
5046	3	mid-block	Nine Mile west of Connemara	with road project
5047	3	mid-block	Taft & Dunbarton	with road project
5050	3	mid-block	Ten Mile & Bramblewood	with road project
5051	3	mid-block	Ten Mile & Linwood	with road project
5052	3	mid-block	Nine Mile & Autum Park	with road project
5053	3	mid-block	Beck north of Stratford	with road project
5054	3	mid-block or signals	Wixom & Glenwood or Deerfield	Completed. New traffic signal & non-motorized mid-block crossing
5055	3	mid-block	Novi & Ledgeview	with road project
5057	3	ramps crosswalk	Fourteen & Novi	SE to NE with road or ADA project
5058	3	ramps cross signal	Fourteen & Welch	with road or ADA project
5063	3	crosswalk signs	Beck & Tamarack	with road project
<b>45</b>		<b>TOTAL PLANNED CROSSING IMPROVEMENTS</b>		

**TABLE 4.4: Proposed Neighborhood Connector Routes**

Segment Item #	No Mo Master Plan Priority	Location	From/To	Length (ft.)	Notes
9067	0	Algonquin Little Falls	Little Rapids west	2,521	
9060	0	Bristol	West Park to Pennington	1,713	
9113	0	Cabaret	Twelve Mile to Fountainwalk	2,427	

**TABLE 4.4: Proposed Neighborhood Connector Routes**

Segment Item #	No Mo Master Plan Priority	Location	From/To	Length (ft.)	Notes
9047	0	Chellenham	Novi west	2,120	
9112	0	Dixon	Twelve Mile to 12 1/2 Mile	2,688	
9071	0	Galway	Center to Novi	2,715	
9069	0	High Meadow	Greening to Jonathan	1,017	
9008	0	Jonathan	High Meadow to west end	297	
9031	0	Village Wood	Heatherbrie to School	876	
9049	0	Village Wood	School to Haggerty	3,720	
9006	0	White Pine	Taft to Moorgate	2,778	
9009	0	White Pine	Beck to Moorgate	3,488	
9034	1	Addington	Taft to Devonshire	602	
9019	1	Addington Jaslyn	Westmont 10 to Devonshire	2,917	
9123	1	Bethany Cherry Hill	Brenda to Highlands	5,984	
9124	1	Bethany Ripple Creek	MaudeLea to Brenda	3,238	
9103	1	Broquet Glenn Haven	Meadowbrook to 8 Mile	4,287	
9094	1	Center	Galway to Northville	483	
9127	1	Christina Sussex	Sullivan to Churchill link	715	
9021	1	Cidermill	Beck to Riverview Ln	3,972	
9145	1	Clark	Eleven Mile south end	2,613	
9082	1	Congress	Constitution to Capitol	759	
9057	1	CortlandHickoryGrove	Ten Mile to Russet Power Park	1,596	
9025	1	Eleven_Clark	Taft to Grand River	3,739	
9140	1	Emerald Forest	school link to west end	1,037	
9029	1	Flint	bend to Grand River	213	
9028	1	Flint_Main	Potomic to bend in Flint	2,595	
9046	1	Galway	Hillridge to Bradford of Novi	4,300	
9075	1	Galway	Nine Mile to Dartmoor	530	
9129	1	Galway	Center to Hillridge	621	
9043	1	HeatherbraeMarks	Meadowbrook to Villagewood	6,138	
9054	1	Kerri_Sullivan	West End to Christine	1,012	
9072	1	Moorsgate	White Pine to Thornton School	713	
9027	1	Potomic	Main to Congress	1,025	
9020	1	RiverviewSimmons	Ten Mile to Cidermill	3,596	
9126	1	SealyJosephBrenda	Eleven Mile to Bethany	4,604	
9041	1	Seely_Old11	Eleven Mile to 275 trail	713	
9056	1	ThatcherCavendish	Sussex link to 10 Mile	2,631	
9090	2	Eleven Mile	Verizon access to Town Center	1,860	
9125	2	Eleven Mile	Meadowbrook to Sealey	2,726	
9053	2	Arcadia	Eleven Mile to end	1,569	
9134	2	Arcadia	Cordoba to west end	1,675	
9119	2	Bristol	West Park west part off road	3,060	
9012	2	Brownstone	Meadowbrook to Hemingway	1,105	
9058	2	Chase	Reindeer to 9 Mile	1,436	

**TABLE 4.4: Proposed Neighborhood Connector Routes**

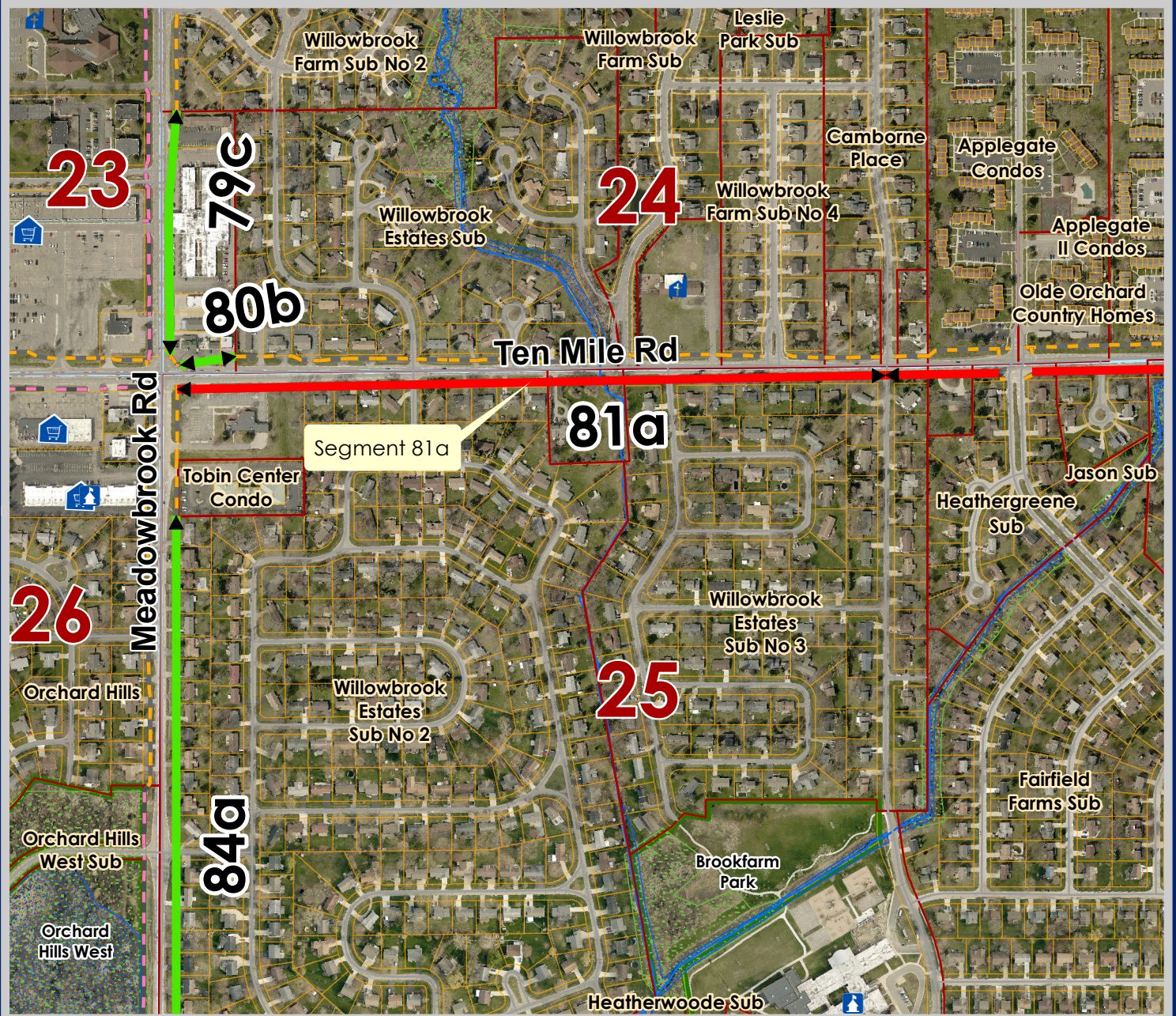
Segment Item #	No Mo Master Plan Priority	Location	From/To	Length (ft.)	Notes
9026	2	Crescentwood Drakes Bay	Glenwood ReyesPoint loop	16,523	
9001	2	Eleven Mile	Meadowbrook to Verizon access	1,880	
9042	2	Ennishore Balcombe	Nine Mile to Chattman	2,699	
9044	2	Fawn Reindeer	Meadowbrook to Nine Mile	1,867	
9111	2	Garfield	ITC to Eight Mile	5,596	
9007	2	HamptonHill Ridge	Cherry Hill to Ten Mile	2,563	
9052	2	Liberty Montmorency	Chateau to LaRoi	2,435	
9128	2	NorthHill Midway	Dunbarton to Galway	3,983	
9011	2	Plateau Hemingway Wolf	Burroughs to Liberty	2,474	
9070	2	Quincey Tamara	Ten Mile to school	1,252	
9015	2	Reeds Pointe Kelsey	Drakes Bay to Wixom	1,894	
9066	2	Silvery	Borchart to Orchard Park cut	940	
9010	2	Steinbeck	Crane to Burroughs	1,418	
9098	2	Thatcher	at eyebrow	179	
9143	2	Thatcher	Clark link to Novi link	899	
9101	2	Town Center Main	Eleven Mile to Potomac	1,417	
9122	2	Twelve Oaks	East loop	4,093	
9133	2	Waverly Independence	Novi to Chateau link	581	
9121	3	12 1/2 Mile	All	2,696	
9013	3	12 Mile	Grand River to Napier	4,616	
9107	3	AlbertKnightsbridge	Twelve Mile Island Lake link	2,416	
9051	3	AmyLadeneSavoie	Orchard Hill link to Meridian	4,051	
9014	3	ApplebrookeRoberts	Deer Run to Nine Mile	2,885	
9018	3	CiderMill Sandpiper	Beck to ITC connector	2,688	
9110	3	Deer Run	Garfield to Applebrooke	2,238	
9016	3	Delmont	Wixom to Woodworth	1,545	
9093	3	Galway	Novi to Center	2,715	
9139	3	Hillside Sunday	Nine Mile to Roberts	2,242	
9132	3	Independance	Sleepy Hollow to Chateau link	606	
9106	3	KingswoodKingsley	Fourteen Mile Chateau link	2,380	
9138	3	LaurelTorino	Nine Mile to Links of Novi	3,531	
9142	3	Orchard Hill	Eight Mile to Whispering link	2,314	
9120	3	Sandstone	Novi to Tollgate link	2,040	
9104	3	SleepyHollow Colling	Independence to HaverHill link	1,743	
9136	3	Terra Del Mar	Ten Mile to Drakes Bay	2,900	
9017	3	Woodworth	Delmont to ITC loop	542	
<b>Total Planned Routes (ft.)</b>				<b>200,023</b>	

## **Attachment B**

Detail Maps of 2020-22 Top 20 Priority Segments  
Segments by Section Map

## Rank 2: SEGMENT 81a (CIP 21-22)

Pathway south of Ten Mile from Meadowbrook Road to Willowbrook Estates: 2,529 ft.



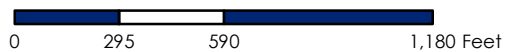
### LEGEND

- Future Pathway Major
- Future Sidewalk Major
- Future Pathway Multi-Use
- Under Construction or Scheduled for 2020-21
- Existing Major Pathway
- Existing Pathway Multi-Use
- Existing Major Sidewalk
- Boardwalks
- Developments
- Wetlands
- Woodlands
- Civic Center
- Fire Station
- Hospital
- Library
- Post Office
- Places of Worship
- School
- Shopping Plaza
- Hotels



### City of Novi

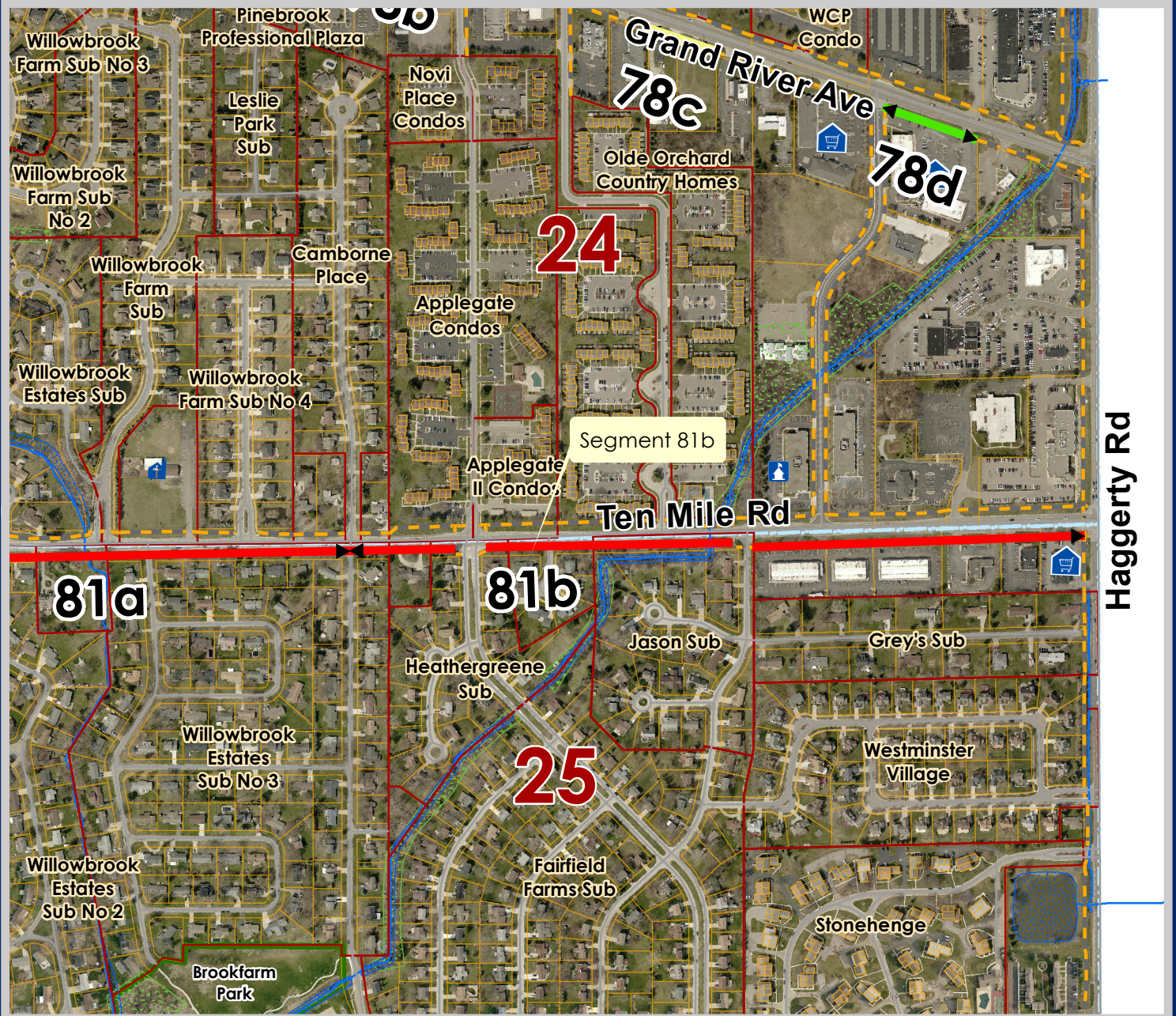
Dept. of Community Development  
 City Hall / Civic Center  
 45175 W Ten Mile Rd  
 Novi, MI 48375  
[cityofnovi.org](http://cityofnovi.org)



Map information depicted is not intended to replace or substitute for any official or primary source. This map was intended to meet National Map Accuracy Standards and use the most recent, accurate sources available to the people of the City of Novi. Boundary measurements and area calculations are approximate and should not be construed as survey measurements performed by a licensed Michigan Surveyor as defined in Michigan Public Act 132 of 1970 as amended. Please contact the City GIS Manager to confirm source and accuracy information related to this map.

# Rank 3: SEGMENT 81b (CIP 21-22)

Pathway south of Ten Mile from Willowbrook Estates to Haggerty: 2,634 ft.



## LEGEND

- Future Pathway Major
- Future Sidewalk Major
- Future Pathway Multi-Use
- Under Construction or Scheduled for 2020-21
- Existing Major Pathway
- Existing Pathway Multi-Use
- Existing Major Sidewalk
- Boardwalks
- Developments
- Wetlands
- Woodlands
- Civic Center
- Fire Station
- Hospital
- Library
- Post Office
- Places of Worship
- School
- Shopping Plaza
- Hotels



## City of Novi

Dept. of Community Development  
 City Hall / Civic Center  
 45175 W Ten Mile Rd  
 Novi, MI 48375  
[cityofnovi.org](http://cityofnovi.org)



Map information depicted is not intended to replace or substitute for any official or primary source. This map was intended to meet National Map Accuracy Standards and use the most recent, accurate sources available to the people of the City of Novi. Boundary measurements and area calculations are approximate and should not be construed as survey measurements performed by a licensed Michigan Surveyor as defined in Michigan Public Act 132 of 1970 as amended. Please contact the City GIS Manager to confirm source and accuracy information related to this map.

# Rank 4: SEGMENT 38

Sidewalk east of Beck from Eleven Mile to Grand River: 2,234 ft.



## LEGEND

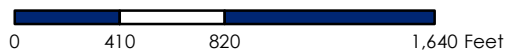
- Future Pathway Major
- Future Sidewalk Major
- Future Pathway Multi-Use
- Under Construction or Scheduled for 2020-21
- Existing Major Pathway
- Existing Pathway Multi-Use
- Existing Major Sidewalk
- Boardwalks
- Developments
- Wetlands
- Woodlands

- Civic Center
- Fire Station
- Hospital
- Library
- Post Office
- Places of Worship
- School
- Shopping Plaza
- Hotels



## City of Novi

Dept. of Community Development  
 City Hall / Civic Center  
 45175 W Ten Mile Rd  
 Novi, MI 48375  
[cityofnovi.org](http://cityofnovi.org)

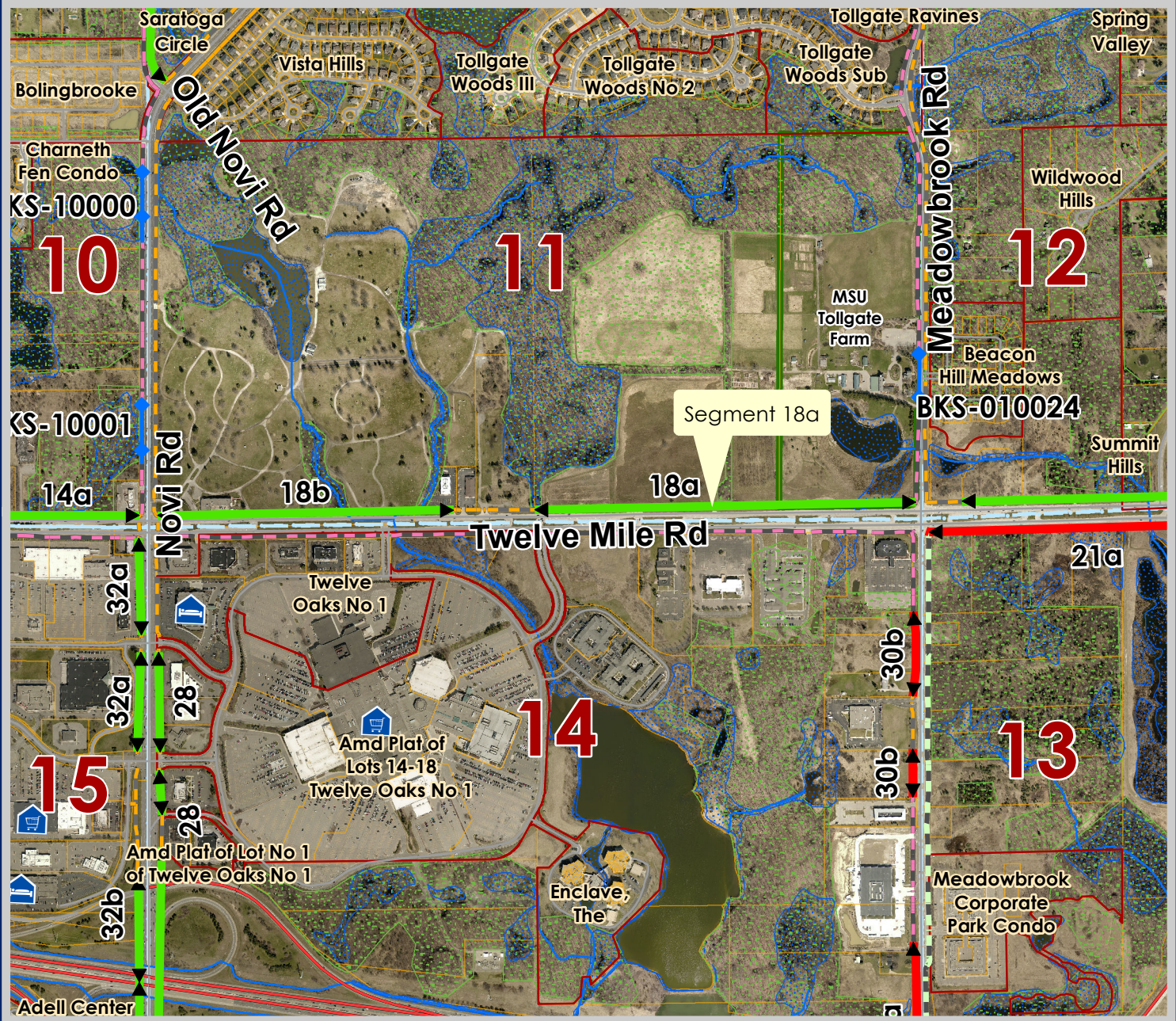


Map information depicted is not intended to replace or substitute for any official or primary source. This map was intended to meet National Map Accuracy Standards and use the most recent, accurate sources available to the people of the City of Novi. Boundary measurements and area calculations are approximate and should not be construed as survey measurements performed by a licensed Michigan Surveyor as defined in Michigan Public Act 132 of 1970 as amended. Please contact the City GIS Manager to confirm source and accuracy information related to this map.



# Rank 5: SEGMENT 18a

Sidewalk north of Twelve Mile from Twelve Oaks to Meadowbrook: 2,613 ft.

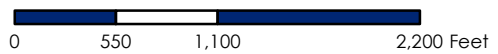


### LEGEND

- Future Pathway Major
- Future Sidewalk Major
- Future Pathway Multi-Use
- Under Construction or Scheduled for 2019-20
- Existing Major Pathway
- Existing Pathway Multi-Use
- Existing Major Sidewalk
- Boardwalks
- Developments
- Wetlands
- Woodlands
- Civic Center
- Fire Station
- Hospital
- Library
- Post Office
- Places of Worship
- Places of Worship-Hindu
- School
- Shopping - Major
- Shopping Plaza
- Hotels



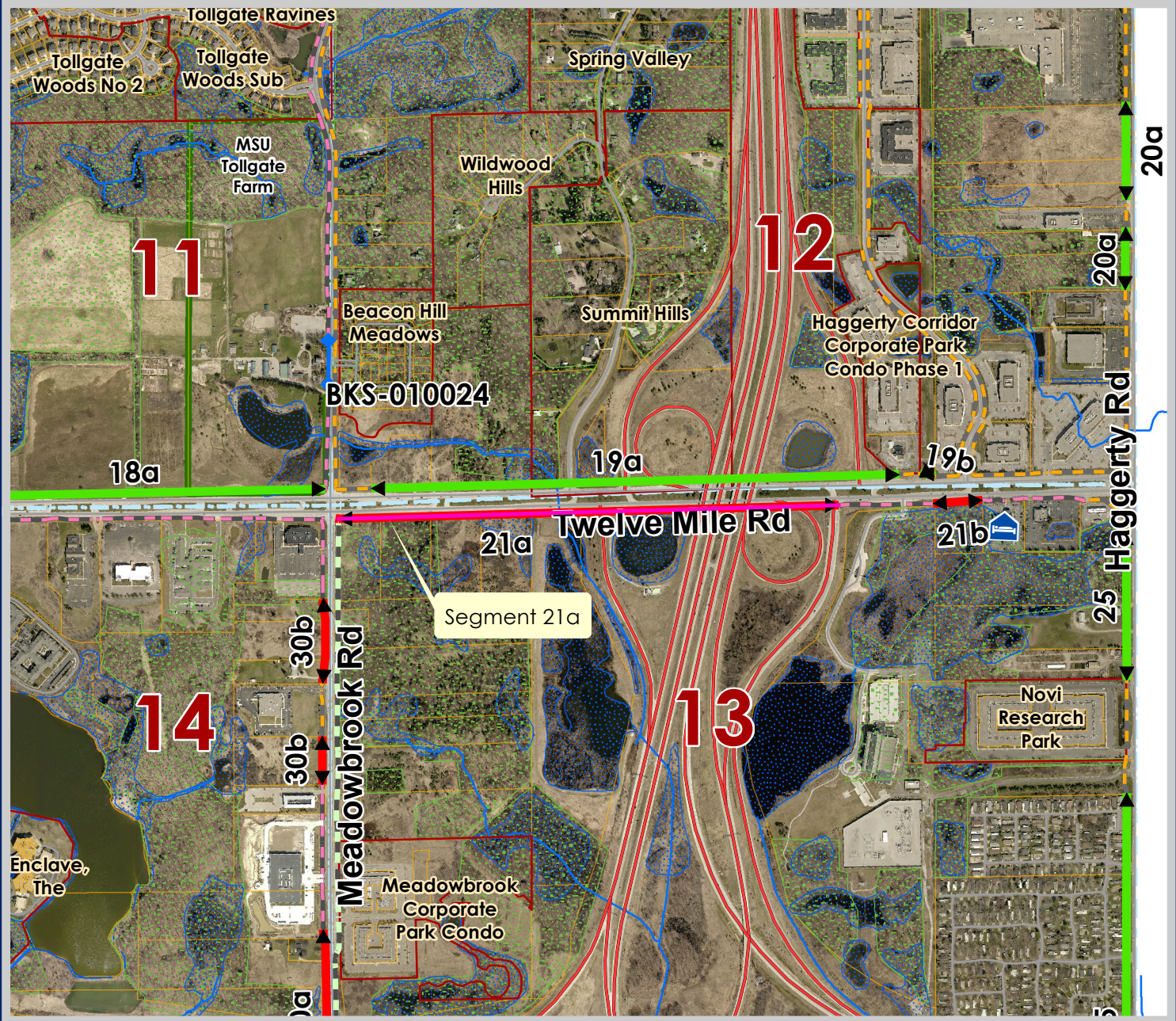
**City of Novi**  
 Dept. of Community Development  
 City Hall / Civic Center  
 45175 W Ten Mile Rd  
 Novi, MI 48375  
 cityofnovi.org



Map information depicted is not intended to replace or substitute for any official or primary source. This map was intended to meet National Map Accuracy Standards and use the most recent, accurate sources available to the people of the City of Novi. Boundary measurements and area calculations are approximate and should not be construed as survey measurements performed by a licensed Michigan Surveyor as defined in Michigan Public Act 132 of 1970 as amended. Please contact the City GIS Manager to confirm source and accuracy information related to this map.

# Rank 6: SEGMENT 21a

Pathway south of Twelve Mile from Meadowbrook to Energy Way: 3,451 ft.



## LEGEND

- Future Pathway Major
- Future Sidewalk Major
- Future Pathway Multi-Use
- Under Construction or Scheduled for 2019-20
- Existing Major Pathway
- Existing Pathway Multi-Use
- Existing Major Sidewalk
- Boardwalks
- Developments
- Wetlands
- Woodlands
- Civic Center
- Fire Station
- Hospital
- Library
- Post Office
- Places of Worship
- Places of Worship-Hindu
- School
- Shopping - Major
- Shopping Plaza
- Hotels



## City of Novi

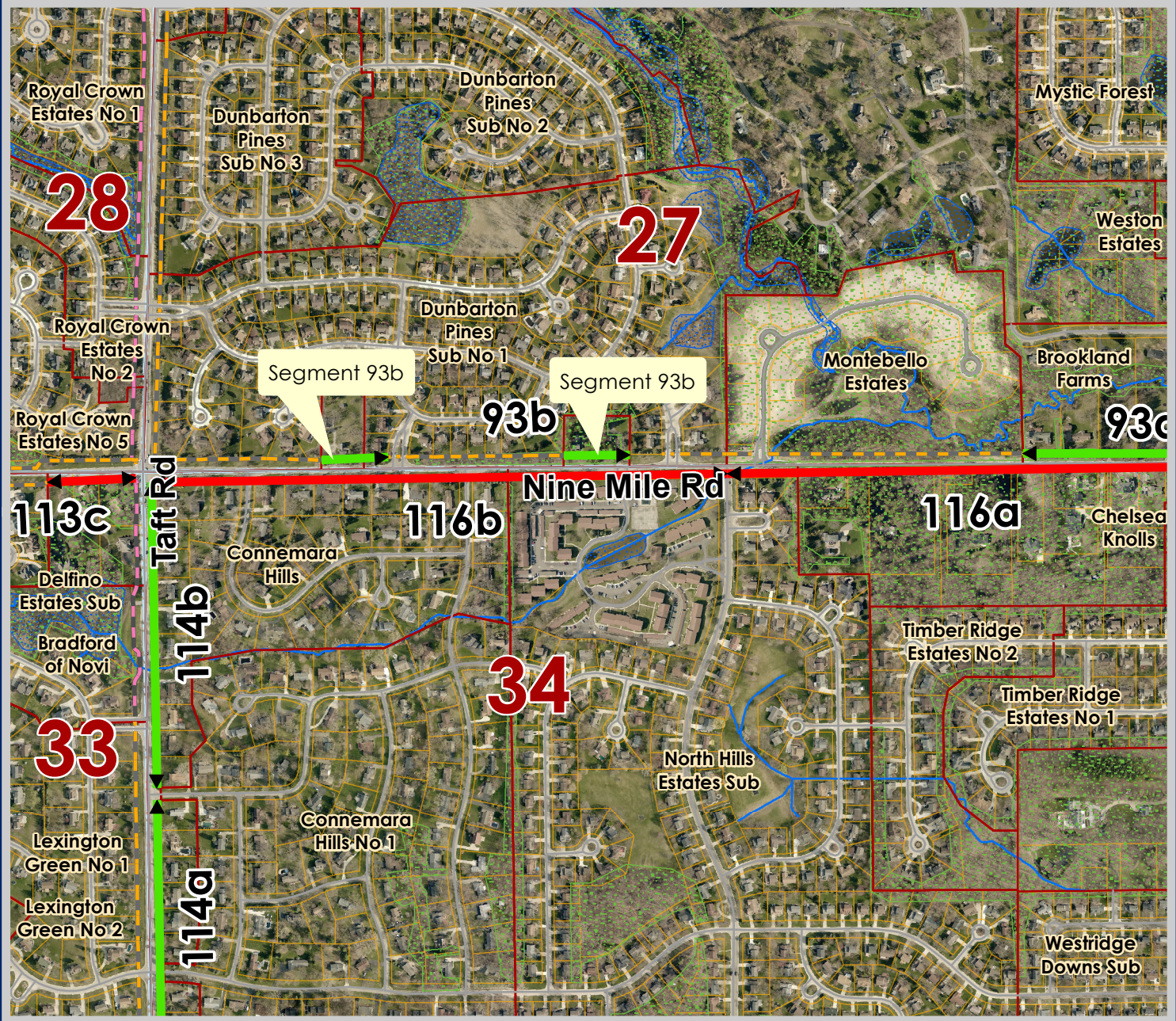
Dept. of Community Development  
 City Hall / Civic Center  
 45175 W Ten Mile Rd  
 Novi, MI 48375  
[cityofnovi.org](http://cityofnovi.org)



Map information depicted is not intended to replace or substitute for any official or primary source. This map was intended to meet National Map Accuracy Standards and use the most recent, accurate sources available to the people of the City of Novi. Boundary measurements and area calculations are approximate and should not be construed as survey measurements performed by a licensed Michigan Surveyor as defined in Michigan Public Act 132 of 1970 as amended. Please contact the City GIS Manager to confirm source and accuracy information related to this map.

# Rank 6: SEGMENT 93b

Sidewalk north of Nine Mile from Taft to Plaisance: 619 ft.



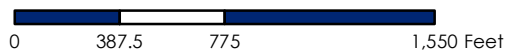
### LEGEND

- Future Pathway Major
- Future Sidewalk Major
- Future Pathway Multi-Use
- Under Construction or Scheduled for 2020-21
- Existing Major Pathway
- Existing Pathway Multi-Use
- Existing Major Sidewalk
- Boardwalks
- Developments
- Wetlands
- Woodlands

- Civic Center
- Fire Station
- Hospital
- Library
- Post Office
- Places of Worship
- School
- Shopping Plaza
- Hotels



**City of Novi**  
 Dept. of Community Development  
 City Hall / Civic Center  
 45175 W Ten Mile Rd  
 Novi, MI 48375  
 cityofnovi.org



Map information depicted is not intended to replace or substitute for any official or primary source. This map was intended to meet National Map Accuracy Standards and use the most recent, accurate sources available to the people of the City of Novi. Boundary measurements and area calculations are approximate and should not be construed as survey measurements performed by a licensed Michigan Surveyor as defined in Michigan Public Act 132 of 1970 as amended. Please contact the City GIS Manager to confirm source and accuracy information related to this map.

# Rank 8: SEGMENT 153

Sidewalk east of Haggerty from City Limits to Taco Bell: 501 ft.

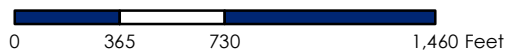


## LEGEND

- Future Pathway Major
- Future Sidewalk Major
- Future Pathway Multi-Use
- Under Construction or Scheduled for 2020-21
- Existing Major Pathway
- Existing Pathway Multi-Use
- Existing Major Sidewalk
- Boardwalks
- Developments
- Wetlands
- Woodlands
- Civic Center
- Fire Station
- Hospital
- Library
- Post Office
- Places of Worship
- School
- Shopping Plaza
- Hotels



**City of Novi**  
 Dept. of Community Development  
 City Hall / Civic Center  
 45175 W Ten Mile Rd  
 Novi, MI 48375  
[cityofnovi.org](http://cityofnovi.org)



Map information depicted is not intended to replace or substitute for any official or primary source. This map was intended to meet National Map Accuracy Standards and use the most recent, accurate sources available to the people of the City of Novi. Boundary measurements and area calculations are approximate and should not be construed as survey measurements performed by a licensed Michigan Surveyor as defined in Michigan Public Act 132 of 1970 as amended. Please contact the City GIS Manager to confirm source and accuracy information related to this map.

# Rank 9: SEGMENT 66

Pathway south of Grand River from Sixth Gate to Main Street: 293 ft.



### LEGEND

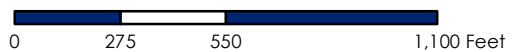
- Future Pathway Major
- Future Sidewalk Major
- Future Pathway Multi-Use
- Under Construction or Scheduled for 2020-21
- Existing Major Pathway
- Existing Pathway Multi-Use
- Existing Major Sidewalk
- Boardwalks
- Developments
- Wetlands
- Woodlands

- Civic Center
- Fire Station
- Hospital
- Library
- Post Office
- Places of Worship
- School
- Shopping Plaza
- Hotels



### City of Novi

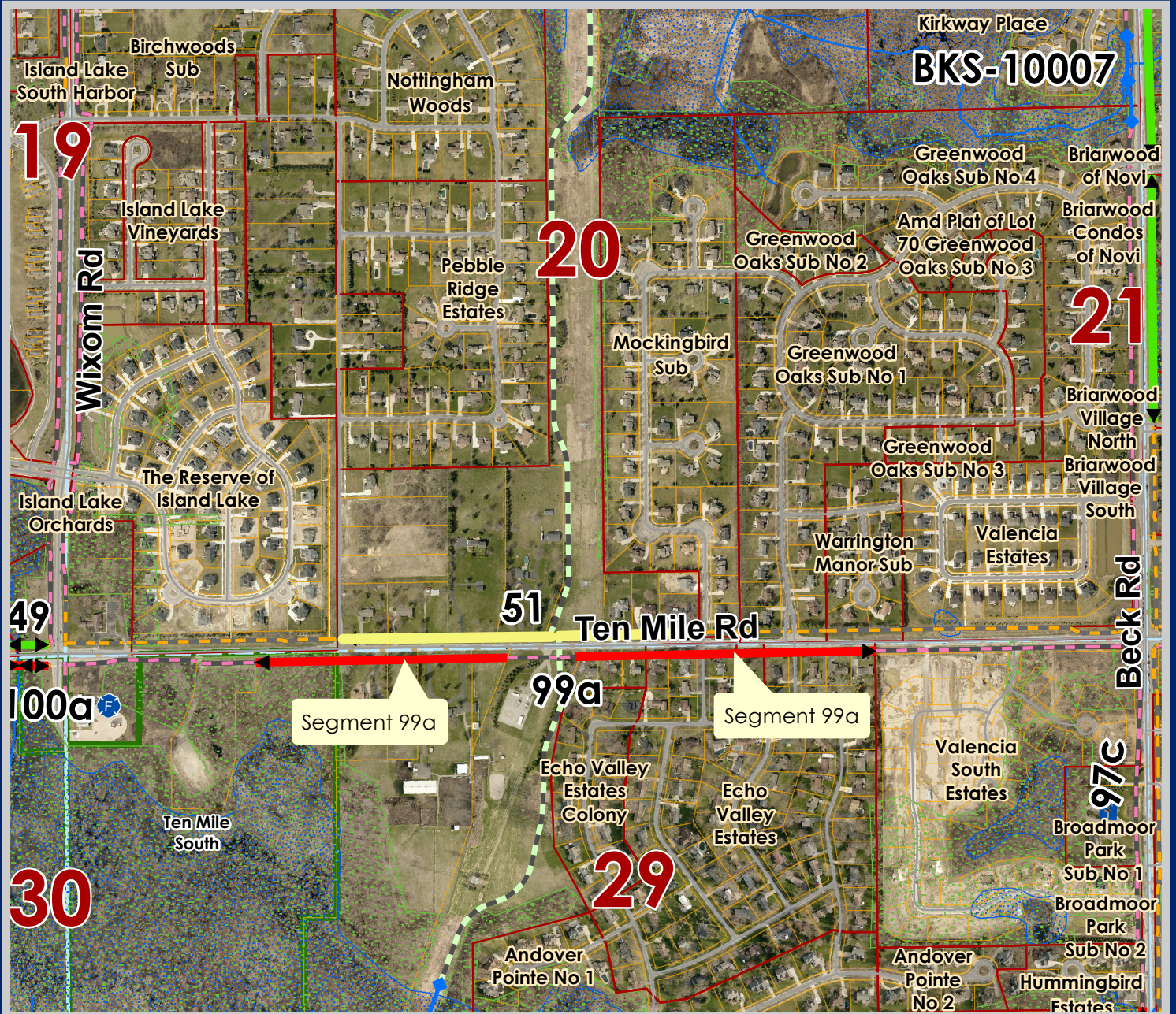
Dept. of Community Development  
 City Hall / Civic Center  
 45175 W Ten Mile Rd  
 Novi, MI 48375  
[cityofnovi.org](http://cityofnovi.org)



Map information depicted is not intended to replace or substitute for any official or primary source. This map was intended to meet National Map Accuracy Standards and use the most recent, accurate sources available to the people of the City of Novi. Boundary measurements and area calculations are approximate and should not be construed as survey measurements performed by a licensed Michigan Surveyor as defined in Michigan Public Act 132 of 1970 as amended. Please contact the City GIS Manager to confirm source and accuracy information related to this map.

# Rank 10: SEGMENT 99a (CIP 25-26)

Pathway south of Ten Mile from Wixom to Valencia South Estates: 2,739 ft.



## LEGEND

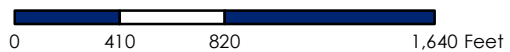
- Future Pathway Major
- Future Sidewalk Major
- Future Pathway Multi-Use
- Under Construction or Scheduled for 2020-21
- Existing Major Pathway
- Existing Pathway Multi-Use
- Existing Major Sidewalk
- Boardwalks
- Developments
- Wetlands
- Woodlands

- Civic Center
- Fire Station
- Hospital
- Library
- Post Office
- Places of Worship
- School
- Shopping Plaza
- Hotels



## City of Novi

Dept. of Community Development  
 City Hall / Civic Center  
 45175 W Ten Mile Rd  
 Novi, MI 48375  
[cityofnovi.org](http://cityofnovi.org)



Map information depicted is not intended to replace or substitute for any official or primary source. This map was intended to meet National Map Accuracy Standards and use the most recent, accurate sources available to the people of the City of Novi. Boundary measurements and area calculations are approximate and should not be construed as survey measurements performed by a licensed Michigan Surveyor as defined in Michigan Public Act 132 of 1970 as amended. Please contact the City GIS Manager to confirm source and accuracy information related to this map.

# Rank 11: SEGMENT 68

Pathway south of Grand River from Funeral Home to Jaguar property: 457 ft.



## LEGEND

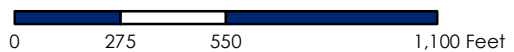
- Future Pathway Major
- Future Sidewalk Major
- Future Pathway Multi-Use
- Under Construction or Scheduled for 2020-21
- Existing Major Pathway
- Existing Pathway Multi-Use
- Existing Major Sidewalk
- Boardwalks
- Developments
- Wetlands
- Woodlands

- Civic Center
- Fire Station
- Hospital
- Library
- Post Office
- Places of Worship
- School
- Shopping Plaza
- Hotels



### City of Novi

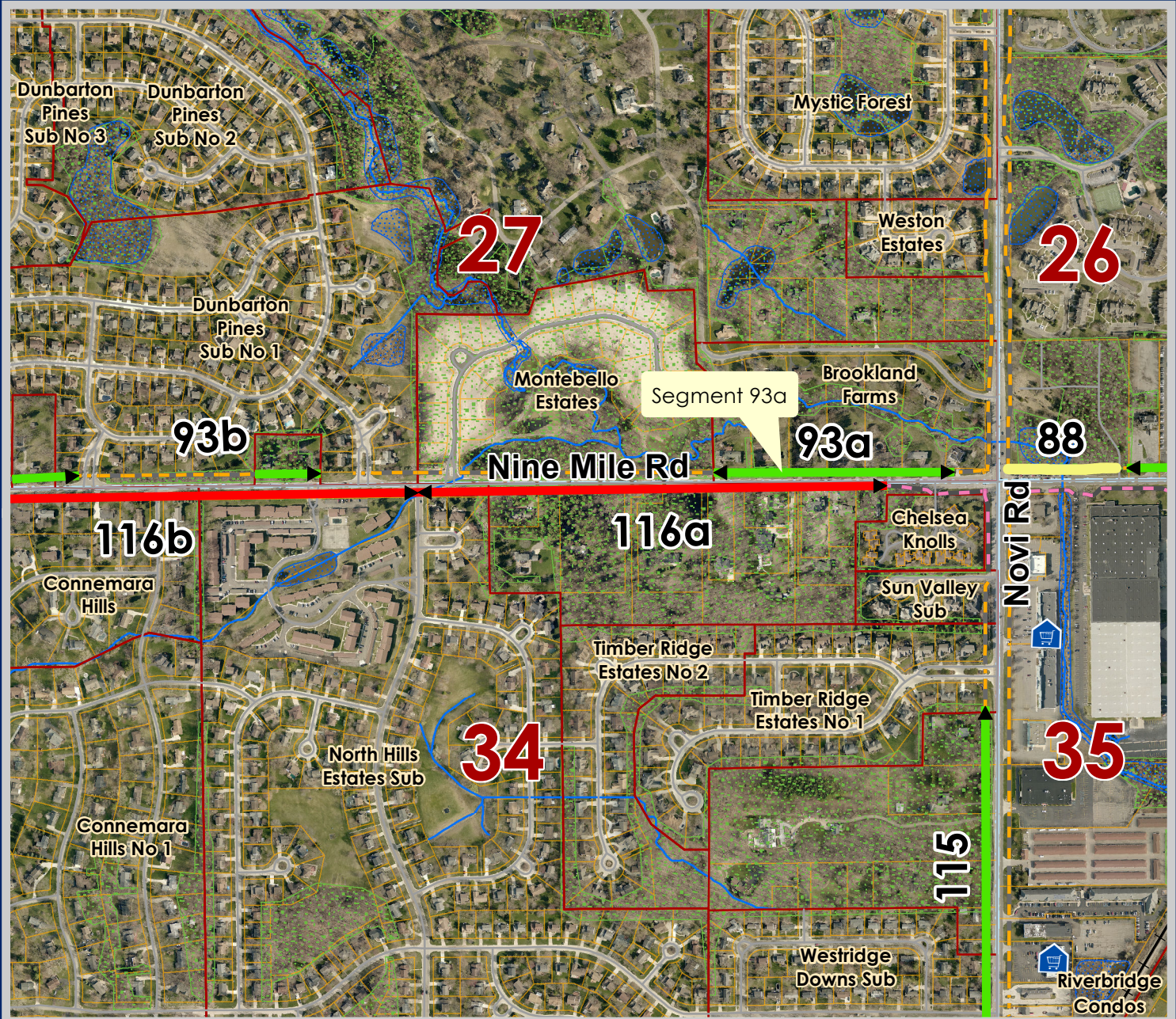
Dept. of Community Development  
 City Hall / Civic Center  
 45175 W Ten Mile Rd  
 Novi, MI 48375  
[cityofnovi.org](http://cityofnovi.org)



Map information depicted is not intended to replace or substitute for any official or primary source. This map was intended to meet National Map Accuracy Standards and use the most recent, accurate sources available to the people of the City of Novi. Boundary measurements and area calculations are approximate and should not be construed as survey measurements performed by a licensed Michigan Surveyor as defined in Michigan Public Act 132 of 1970 as amended. Please contact the City GIS Manager to confirm source and accuracy information related to this map.

# Rank 12: SEGMENT 93a

Sidewalk north of Nine Mile from Montebello Estates to Novi: 1,122 ft.



## LEGEND

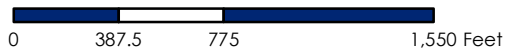
- Future Pathway Major
- Future Sidewalk Major
- Future Pathway Multi-Use
- Under Construction or Scheduled for 2020-21
- Existing Major Pathway
- Existing Pathway Multi-Use
- Existing Major Sidewalk
- Boardwalks
- Developments
- Wetlands
- Woodlands

- Civic Center
- Fire Station
- Hospital
- Library
- Post Office
- Places of Worship
- School
- Shopping Plaza
- Hotels



## City of Novi

Dept. of Community Development  
 City Hall / Civic Center  
 45175 W Ten Mile Rd  
 Novi, MI 48375  
[cityofnovi.org](http://cityofnovi.org)

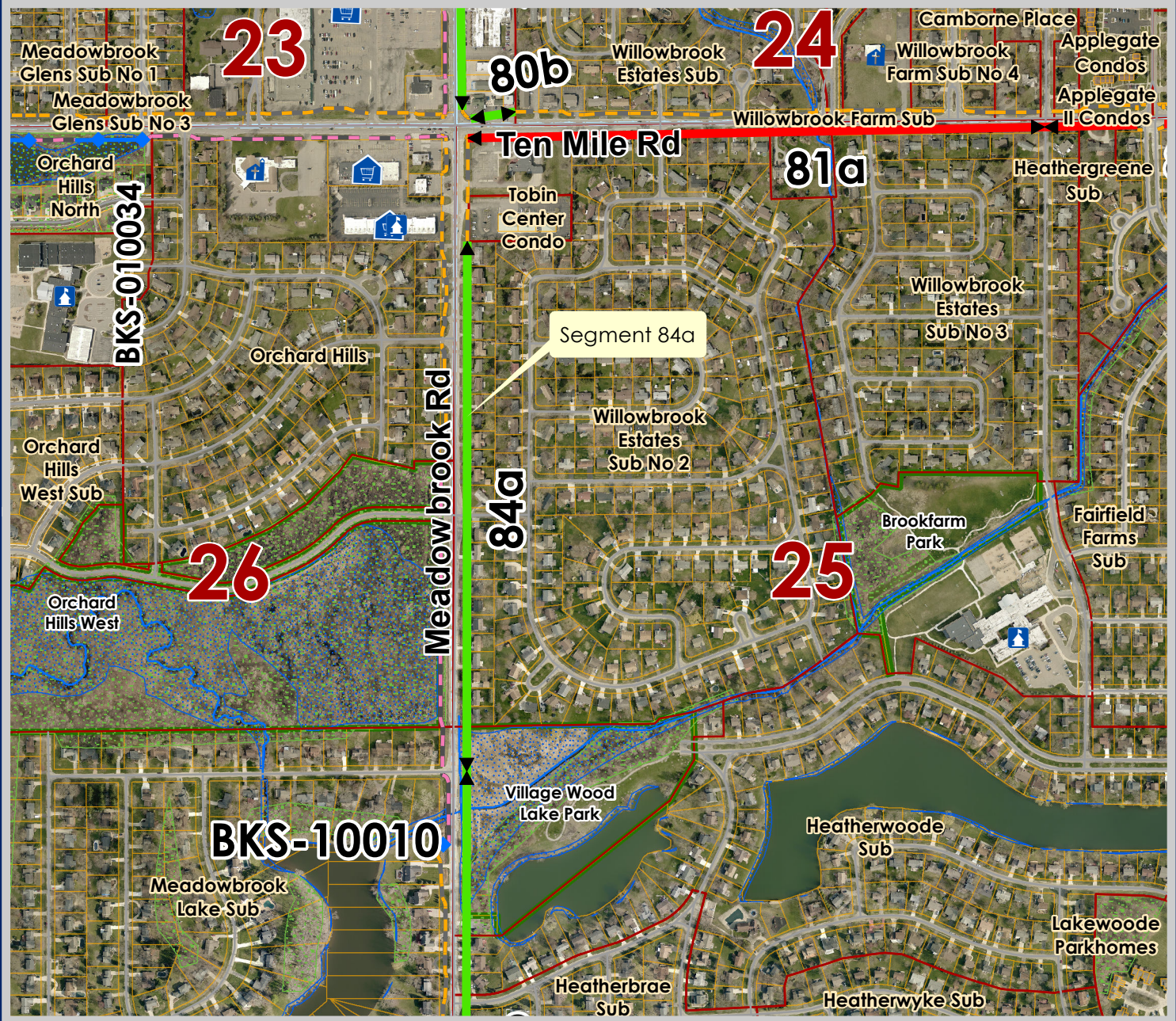


Map information depicted is not intended to replace or substitute for any official or primary source. This map was intended to meet National Map Accuracy Standards and use the most recent, accurate sources available to the people of the City of Novi. Boundary measurements and area calculations are approximate and should not be construed as survey measurements performed by a licensed Michigan Surveyor as defined in Michigan Public Act 132 of 1970 as amended. Please contact the City GIS Manager to confirm source and accuracy information related to this map.



# Rank 13: SEGMENT 84a

Sidewalk east of Meadowbrook from Ten Mile to Chattman: 2,323 ft.



## LEGEND

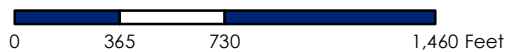
- Future Pathway Major
- Future Sidewalk Major
- Future Pathway Multi-Use
- Under Construction or Scheduled for 2020-21
- Existing Major Pathway
- Existing Pathway Multi-Use
- Existing Major Sidewalk
- Boardwalks
- Developments
- Wetlands
- Woodlands

- Civic Center
- Fire Station
- Hospital
- Library
- Post Office
- Places of Worship
- School
- Shopping Plaza
- Hotels



## City of Novi

Dept. of Community Development  
 City Hall / Civic Center  
 45175 W Ten Mile Rd  
 Novi, MI 48375  
[cityofnovi.org](http://cityofnovi.org)



Map information depicted is not intended to replace or substitute for any official or primary source. This map was intended to meet National Map Accuracy Standards and use the most recent, accurate sources available to the people of the City of Novi. Boundary measurements and area calculations are approximate and should not be construed as survey measurements performed by a licensed Michigan Surveyor as defined in Michigan Public Act 132 of 1970 as amended. Please contact the City GIS Manager to confirm source and accuracy information related to this map.

# Rank 13 (b): SEGMENT 72

Pathway north of Grand River from Town Center to Amstaff Building: 677 ft.



## LEGEND

- Future Pathway Major
- Future Sidewalk Major
- Future Pathway Multi-Use
- Under Construction or Scheduled for 2020-21
- Existing Major Pathway
- Existing Pathway Multi-Use
- Existing Major Sidewalk
- Boardwalks
- Developments
- Wetlands
- Woodlands

- Civic Center
- Fire Station
- Hospital
- Library
- Post Office
- Places of Worship
- School
- Shopping Plaza
- Hotels



## City of Novi

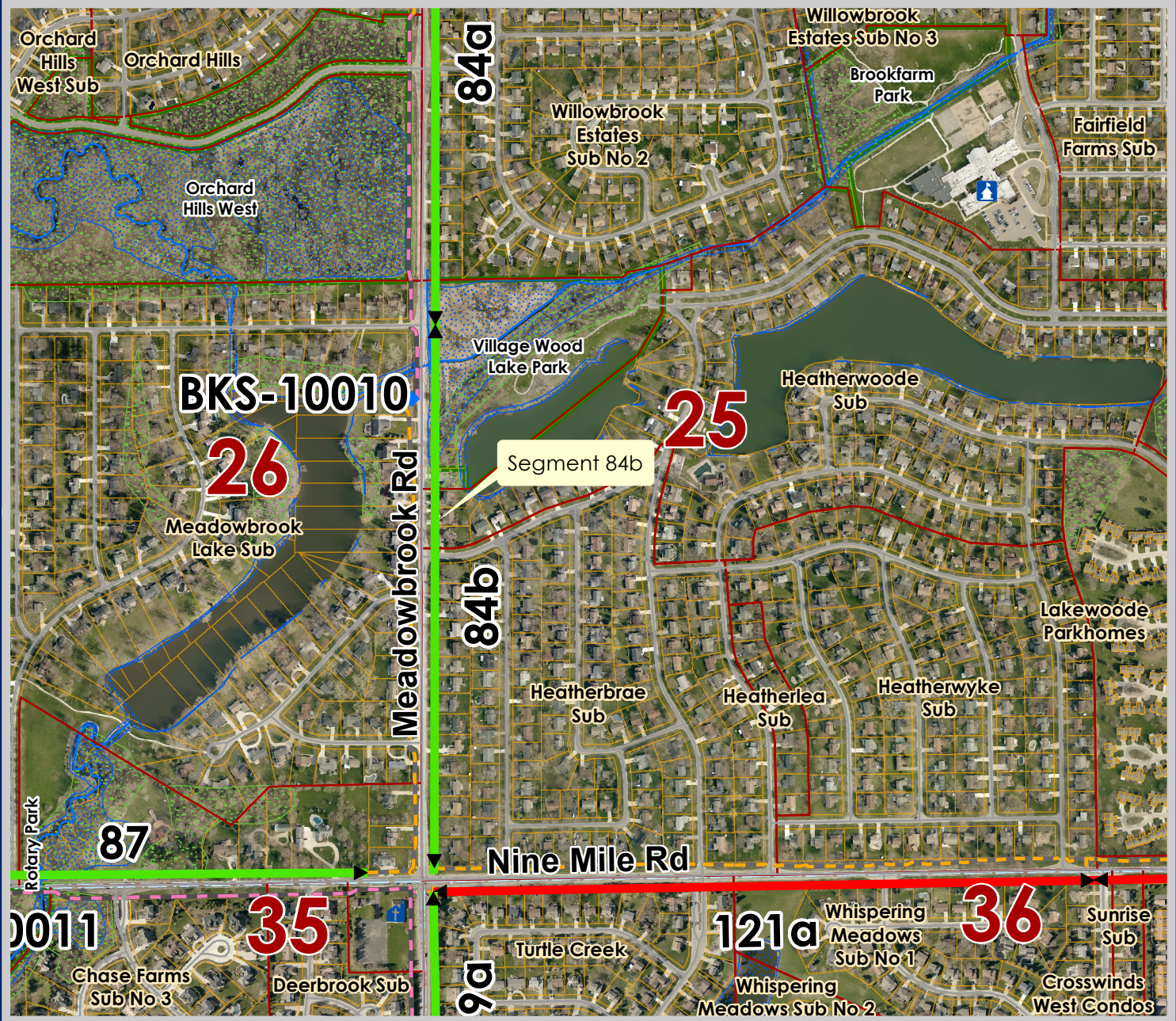
Dept. of Community Development  
 City Hall / Civic Center  
 45175 W Ten Mile Rd  
 Novi, MI 48375  
[cityofnovi.org](http://cityofnovi.org)



Map information depicted is not intended to replace or substitute for any official or primary source. This map was intended to meet National Map Accuracy Standards and use the most recent, accurate sources available to the people of the City of Novi. Boundary measurements and area calculations are approximate and should not be construed as survey measurements performed by a licensed Michigan Surveyor as defined in Michigan Public Act 132 of 1970 as amended. Please contact the City GIS Manager to confirm source and accuracy information related to this map.

# Rank 15: SEGMENT 84b

Sidewalk east of Meadowbrook from Nine Mile to Chattman: 2,380 ft.



### LEGEND

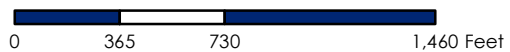
- Future Pathway Major
- Future Sidewalk Major
- Future Pathway Multi-Use
- Under Construction or Scheduled for 2020-21
- Existing Major Pathway
- Existing Pathway Multi-Use
- Existing Major Sidewalk
- Boardwalks
- Developments
- Wetlands
- Woodlands

- Civic Center
- Fire Station
- Hospital
- Library
- Post Office
- Places of Worship
- School
- Shopping Plaza
- Hotels



### City of Novi

Dept. of Community Development  
 City Hall / Civic Center  
 45175 W Ten Mile Rd  
 Novi, MI 48375  
[cityofnovi.org](http://cityofnovi.org)



Map information depicted is not intended to replace or substitute for any official or primary source. This map was intended to meet National Map Accuracy Standards and use the most recent, accurate sources available to the people of the City of Novi. Boundary measurements and area calculations are approximate and should not be construed as survey measurements performed by a licensed Michigan Surveyor as defined in Michigan Public Act 132 of 1970 as amended. Please contact the City GIS Manager to confirm source and accuracy information related to this map.

# Rank 16: SEGMENT 90 (CIP 25-26)

Pathway south of Ten Mile from Maly Dental to Novi Ridge Apts: 2,122 ft.



## LEGEND

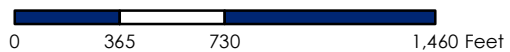
- Future Pathway Major
- Future Sidewalk Major
- Future Pathway Multi-Use
- Under Construction or Scheduled for 2020-21
- Existing Major Pathway
- Existing Pathway Multi-Use
- Existing Major Sidewalk
- Boardwalks
- Developments
- Wetlands
- Woodlands

- Civic Center
- Fire Station
- Hospital
- Library
- Post Office
- Places of Worship
- School
- Shopping Plaza
- Hotels



## City of Novi

Dept. of Community Development  
 City Hall / Civic Center  
 45175 W Ten Mile Rd  
 Novi, MI 48375  
[cityofnovi.org](http://cityofnovi.org)



Map information depicted is not intended to replace or substitute for any official or primary source. This map was intended to meet National Map Accuracy Standards and use the most recent, accurate sources available to the people of the City of Novi. Boundary measurements and area calculations are approximate and should not be construed as survey measurements performed by a licensed Michigan Surveyor as defined in Michigan Public Act 132 of 1970 as amended. Please contact the City GIS Manager to confirm source and accuracy information related to this map.

# Rank 17: SEGMENT 58b

Sidewalk east of Beck from Cider Mill to Sierra: 2,553 ft.



## LEGEND

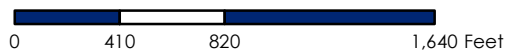
- Future Pathway Major
- Future Sidewalk Major
- Future Pathway Multi-Use
- Under Construction or Scheduled for 2020-21
- Existing Major Pathway
- Existing Pathway Multi-Use
- Existing Major Sidewalk
- Boardwalks
- Developments
- Wetlands
- Woodlands

- Civic Center
- Fire Station
- Hospital
- Library
- Post Office
- Places of Worship
- School
- Shopping Plaza
- Hotels



## City of Novi

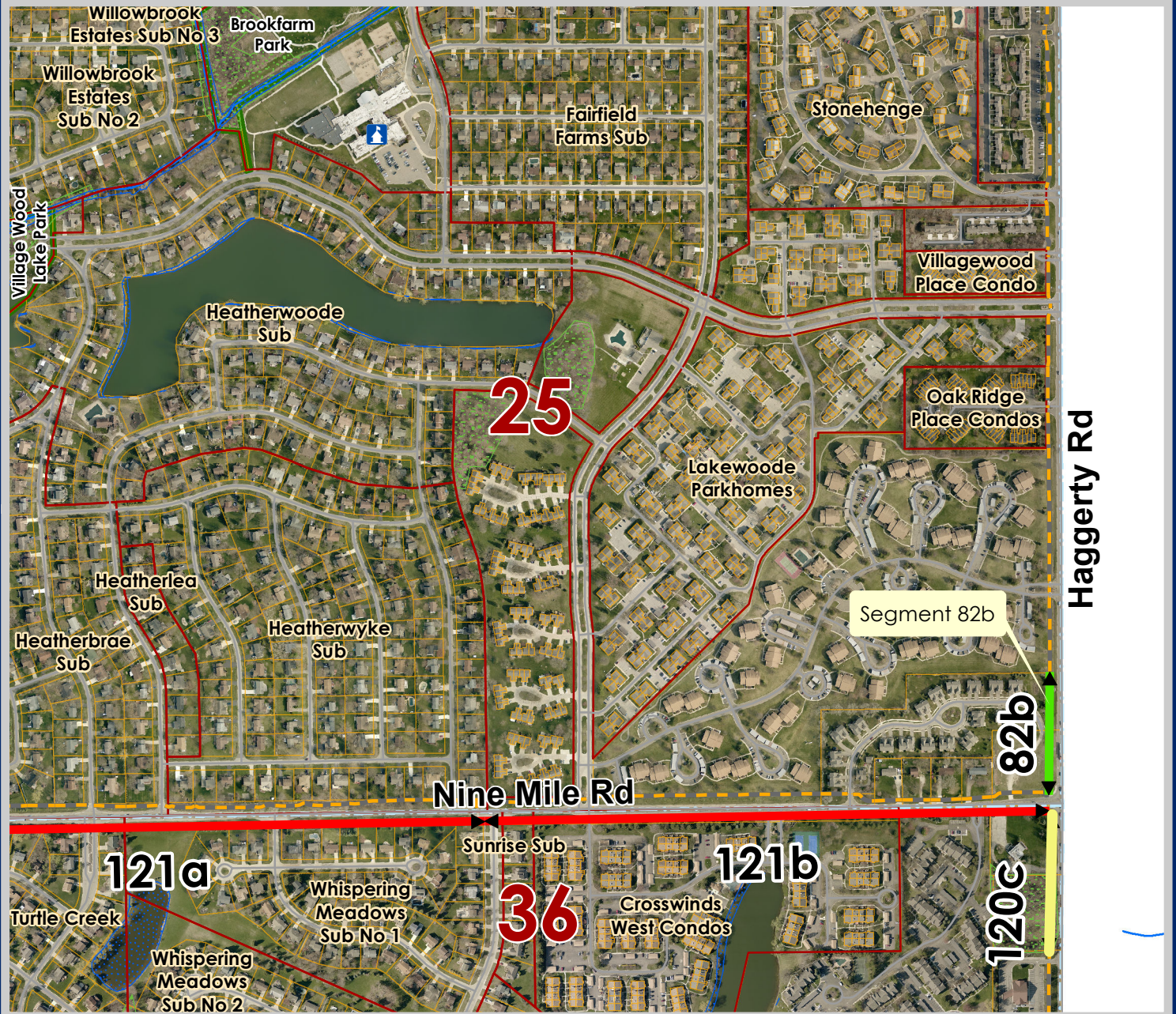
Dept. of Community Development  
 City Hall / Civic Center  
 45175 W Ten Mile Rd  
 Novi, MI 48375  
[cityofnovi.org](http://cityofnovi.org)



Map information depicted is not intended to replace or substitute for any official or primary source. This map was intended to meet National Map Accuracy Standards and use the most recent, accurate sources available to the people of the City of Novi. Boundary measurements and area calculations are approximate and should not be construed as survey measurements performed by a licensed Michigan Surveyor as defined in Michigan Public Act 132 of 1970 as amended. Please contact the City GIS Manager to confirm source and accuracy information related to this map.

# Rank 18: SEGMENT 82b

Sidewalk west of Haggerty from Nine Mile to Novi Ridge Apts: 539 ft.



## LEGEND

- Future Pathway Major
- Future Sidewalk Major
- Future Pathway Multi-Use
- Under Construction or Scheduled for 2020-21
- Existing Major Pathway
- Existing Pathway Multi-Use
- Existing Major Sidewalk
- Boardwalks
- Developments
- Wetlands
- Woodlands

- Civic Center
- Fire Station
- Hospital
- Library
- Post Office
- Places of Worship
- School
- Shopping Plaza
- Hotels



## City of Novi

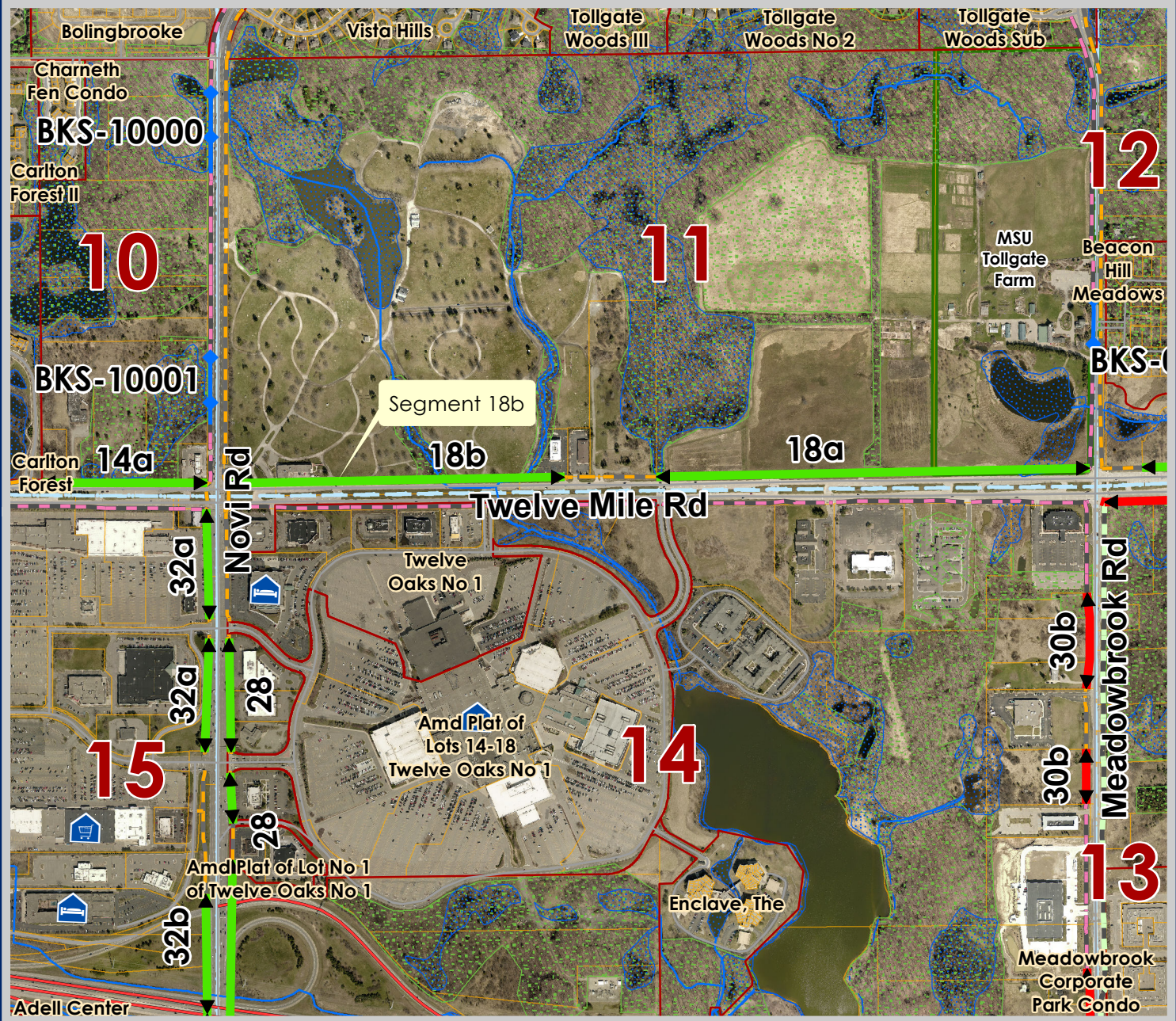
Dept. of Community Development  
 City Hall / Civic Center  
 45175 W Ten Mile Rd  
 Novi, MI 48375  
[cityofnovi.org](http://cityofnovi.org)



Map information depicted is not intended to replace or substitute for any official or primary source. This map was intended to meet National Map Accuracy Standards and use the most recent, accurate sources available to the people of the City of Novi. Boundary measurements and area calculations are approximate and should not be construed as survey measurements performed by a licensed Michigan Surveyor as defined in Michigan Public Act 132 of 1970 as amended. Please contact the City GIS Manager to confirm source and accuracy information related to this map.

# Rank 19: SEGMENT 18b

Sidewalk north of Twelve Mile from Novi Road to Twelve Oaks: 2,027 ft.



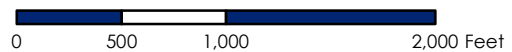
## LEGEND

- Future Pathway Major
- Future Sidewalk Major
- Future Pathway Multi-Use
- Under Construction or Scheduled for 2019-20
- Existing Major Pathway
- Existing Pathway Multi-Use
- Existing Major Sidewalk
- Boardwalks
- Developments
- Wetlands
- Woodlands
- Civic Center
- Fire Station
- Hospital
- Library
- Post Office
- Places of Worship
- Places of Worship-Hindu
- School
- Shopping - Major
- Shopping Plaza
- Hotels



### City of Novi

Dept. of Community Development  
 City Hall / Civic Center  
 45175 W Ten Mile Rd  
 Novi, MI 48375  
[cityofnovi.org](http://cityofnovi.org)



Map information depicted is not intended to replace or substitute for any official or primary source. This map was intended to meet National Map Accuracy Standards and use the most recent, accurate sources available to the people of the City of Novi. Boundary measurements and area calculations are approximate and should not be construed as survey measurements performed by a licensed Michigan Surveyor as defined in Michigan Public Act 132 of 1970 as amended. Please contact the City GIS Manager to confirm source and accuracy information related to this map.

# Rank 20: SEGMENT 58a

Sidewalk east of Beck from Ashley to Cider Mill: 1,228 ft.

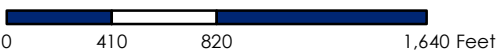


### LEGEND

- Future Pathway Major
- Future Sidewalk Major
- Future Pathway Multi-Use
- Under Construction or Scheduled for 2020-21
- Existing Major Pathway
- Existing Pathway Multi-Use
- Existing Major Sidewalk
- Boardwalks
- Developments
- Wetlands
- Woodlands
- Civic Center
- Fire Station
- Hospital
- Library
- Post Office
- Places of Worship
- School
- Shopping Plaza
- Hotels



**City of Novi**  
 Dept. of Community Development  
 City Hall / Civic Center  
 45175 W Ten Mile Rd  
 Novi, MI 48375  
 cityofnovi.org



Map information depicted is not intended to replace or substitute for any official or primary source. This map was intended to meet National Map Accuracy Standards and use the most recent, accurate sources available to the people of the City of Novi. Boundary measurements and area calculations are approximate and should not be construed as survey measurements performed by a licensed Michigan Surveyor as defined in Michigan Public Act 132 of 1970 as amended. Please contact the City GIS Manager to confirm source and accuracy information related to this map.



# Rank 21: SEGMENT 52a

Pathway south of Eleven Mile from Wixom to ITC Corridor: 2,566 ft.



## LEGEND

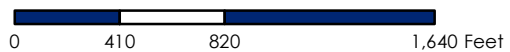
- Future Pathway Major
- Future Sidewalk Major
- Future Pathway Multi-Use
- Under Construction or Scheduled for 2020-21
- Existing Major Pathway
- Existing Pathway Multi-Use
- Existing Major Sidewalk
- Boardwalks
- Developments
- Wetlands
- Woodlands

- Civic Center
- Fire Station
- Hospital
- Library
- Post Office
- Places of Worship
- School
- Shopping Plaza
- Hotels

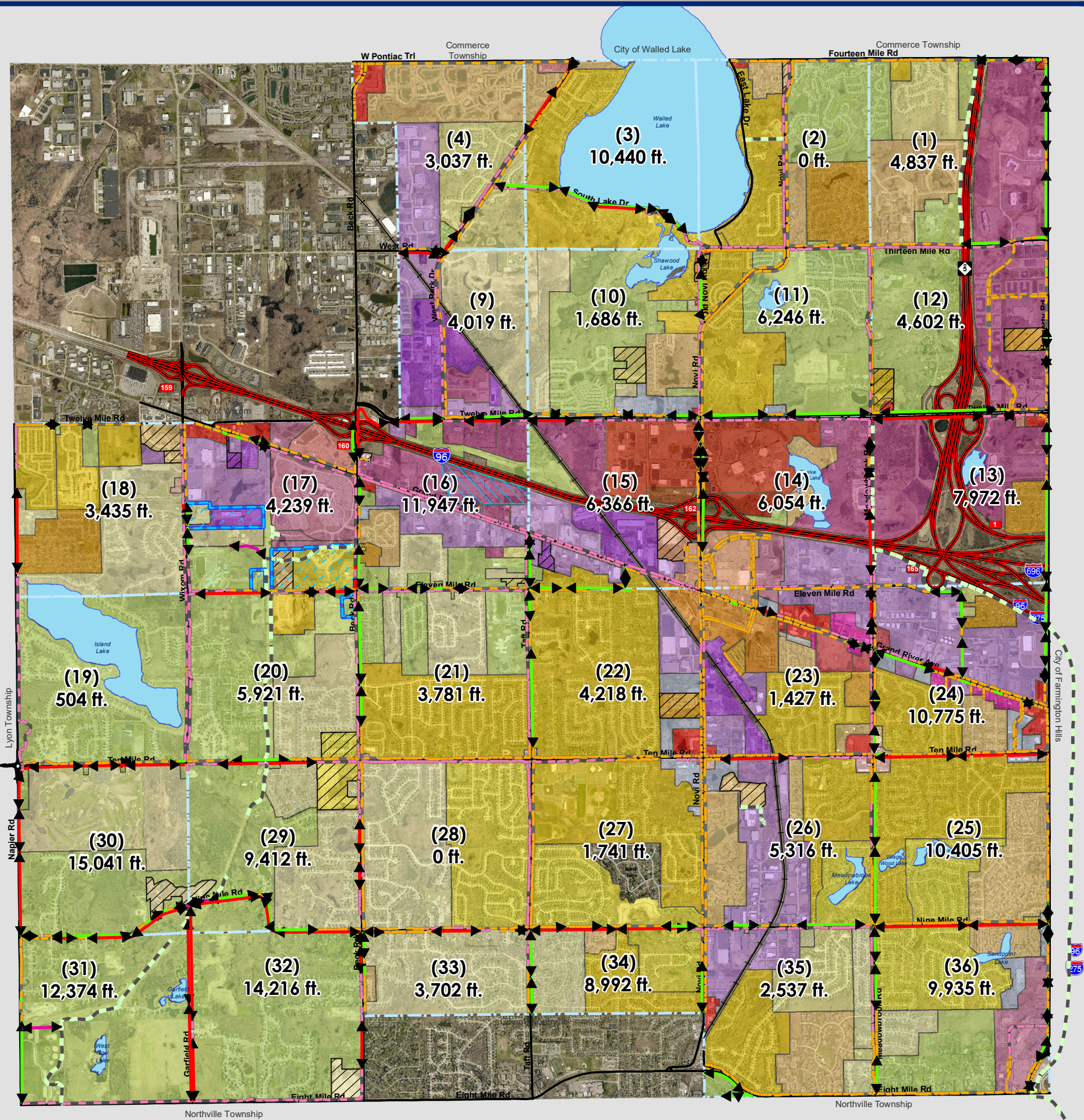


## City of Novi

Dept. of Community Development  
 City Hall / Civic Center  
 45175 W Ten Mile Rd  
 Novi, MI 48375  
[cityofnovi.org](http://cityofnovi.org)



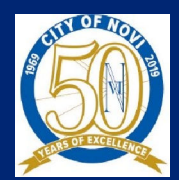
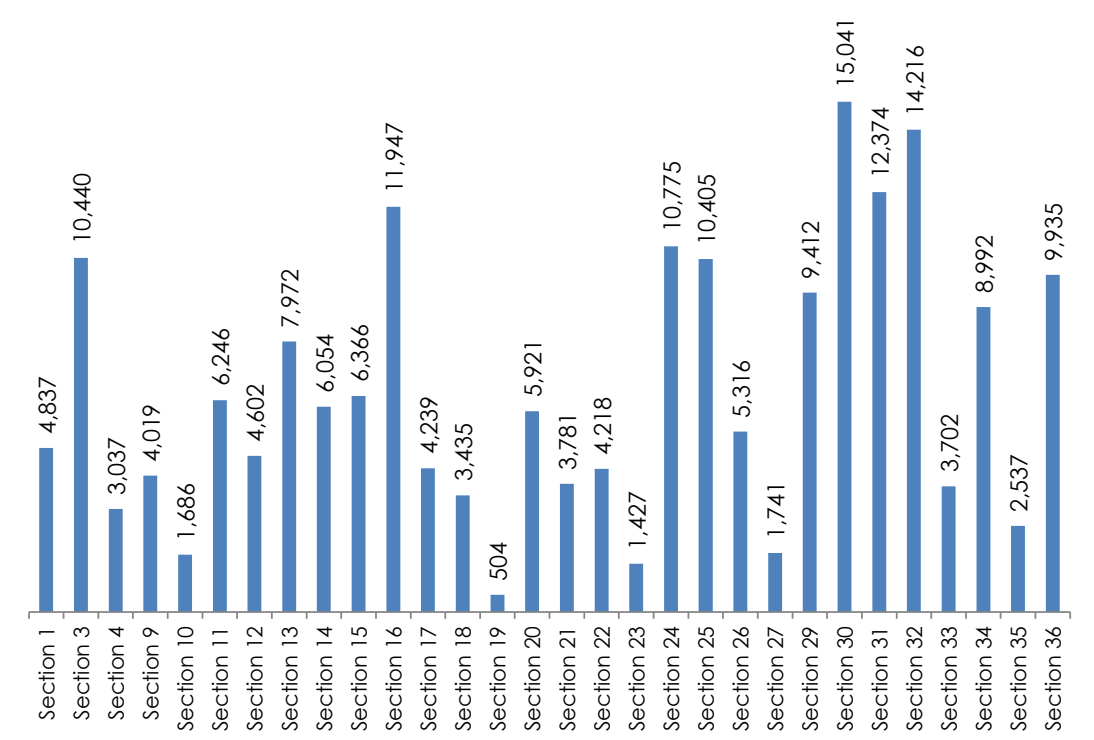
Map information depicted is not intended to replace or substitute for any official or primary source. This map was intended to meet National Map Accuracy Standards and use the most recent, accurate sources available to the people of the City of Novi. Boundary measurements and area calculations are approximate and should not be construed as survey measurements performed by a licensed Michigan Surveyor as defined in Michigan Public Act 132 of 1970 as amended. Please contact the City GIS Manager to confirm source and accuracy information related to this map.



# Total Lengths of Future Segments by Section

**Legend**

- Future Pathway Major
- Future Sidewalk Major
- Future Pathway Multi-Use
- Existing Major Pathway
- Existing Pathway Multi-Use
- Existing Major Sidewalk
- Freeway
- Major Streets
- Sections
- Exposition Overlay (EXO)
- Planned Suburban Low-Rise (PSLR)
- Planned Rezoning Overlay (PRO)
- R-A: Residential Acreage
- R-1: One-Family Residential
- R-2: One-Family Residential
- R-3: One-Family Residential
- R-4: One-Family Residential
- RT: Two-Family Residential
- RM-1: Low-Density Multiple-Family
- RM-2: High-Density Multiple-Family
- MH: Mobile Home
- B-1: Local Business
- B-2: Community Business
- B-3: General Business
- C: Conference
- EXPO: Expo
- GE: Gateway East
- FS: Freeway Service
- I-1: Light Industrial
- I-2: General Industrial
- NCC: Non-Center Commercial
- OS-1: Office Service
- OSC: Office Service Commercial
- OST: Office Service Technology
- EXO: OST District with EXO Overlay
- RC: Regional Center
- P-1: Vehicular Parking
- TC: Town Center
- TC-1: Town Center-1



Date Created: October 6, 2020; Created by: Lindsay Bell  
 Copyright 2020, City of Novi, Michigan

No part of this product shall be reproduced or transmitted in any form or any means, electronic or mechanical, for any purpose without prior written permission from the City of Novi.

This map complies with the National Map Accuracy Standards. The City of Novi and its Department of Information Technology assume no legal responsibility for the content and/or inappropriate use of this

