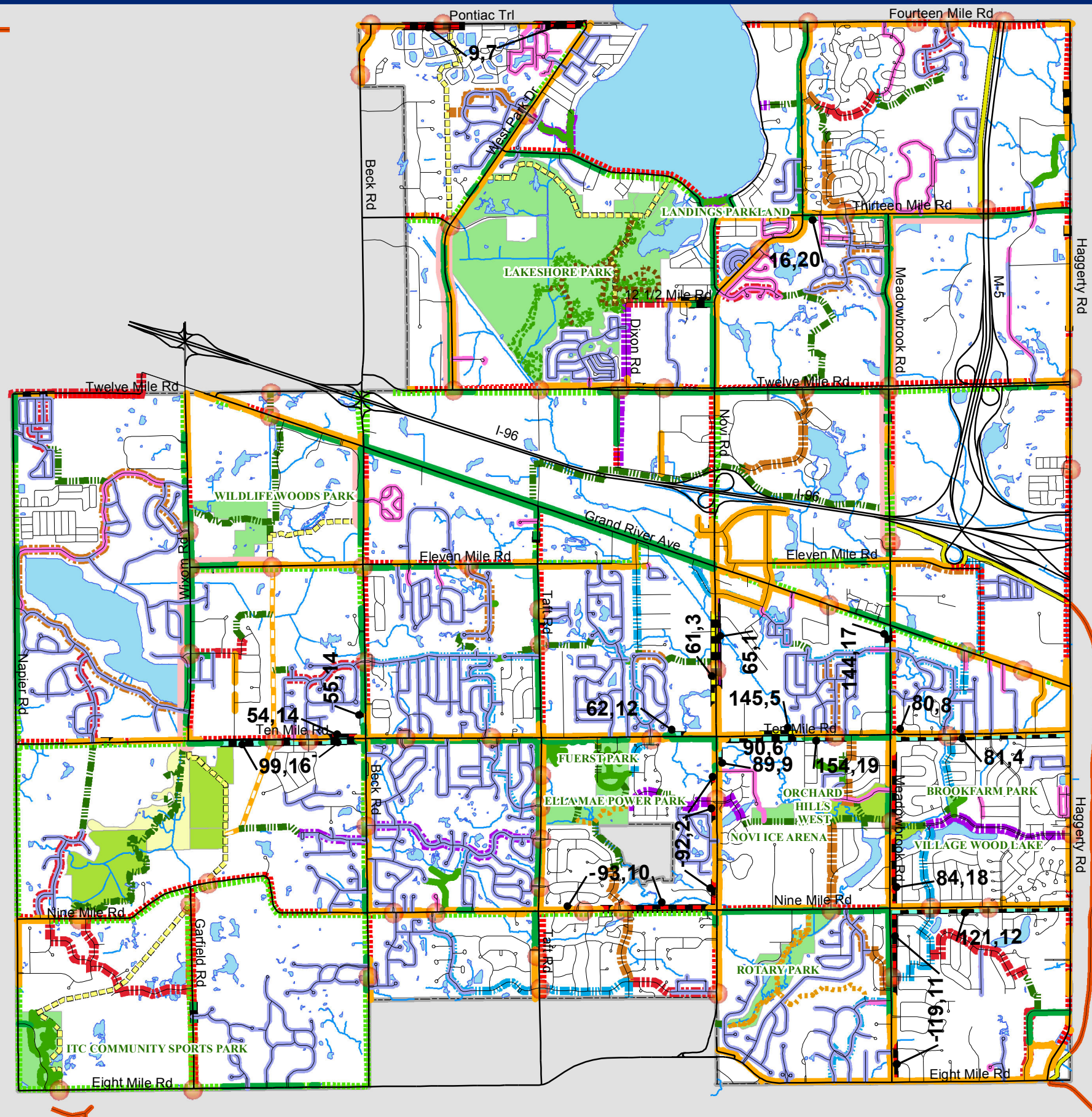


City of Novi Pathway and Sidewalk Prioritization Analysis and Process

As of November 1, 2011



Map Legend

Existing On-Road Pathways & Sidewalks	Planned Crossing Improvement
Existing Major Road Pathway	Off Road Paths Trails
Existing Major Road Sidewalk	Existing Regional Path
Local Sidewalk Both Sides	Planned Regional Path
Local Sidewalk One Side	Exist Neighboring Regional Path
Proposed On-Road Pathways & Sidewalks	Existing Paved Local Path
Scheduled Pathway	Planned Paved Local Path
Top 20 Priority Pathway	Exist Unpaved Path Planned to Pave
Pathway by Developer	Exist Unpaved Path
Other Proposed Pathway	Planned Unpaved Path
Scheduled Sidewalk	Mountain Bike Path
Top 20 Priority Sidewalk	Bike Routes
Sidewalk by Developer	Priority Rank
Other Proposed Sidewalk	0
Planned On-Road Regional Upgrade	1
XX, XX = Top 20 Segments	2
	3



City of Novi
 Dept. of Community Development
 City Hall / Civic Center
 45175 W Ten Mile Rd
 Novi, MI 48375
 cityofnovi.org


Map Author: Mark Spencer
 Date: 11/3/11
 Project: Non-Motorized Planning Map
 Version #:1.0



1 inch = 3,583 feet

MAP INTERPRETATION NOTICE

Map information depicted is not intended to replace or substitute for any official or primary source. This map was intended to meet National Map Accuracy Standards and use the most recent, accurate sources available to the people of the City of Novi. Boundary measurements and area calculations are approximate and should not be construed as survey measurements performed by a licensed Michigan Surveyor as defined in Michigan Public Act 132 of 1970 as amended. Please contact the City GIS Manager to confirm source and accuracy information related to this map.



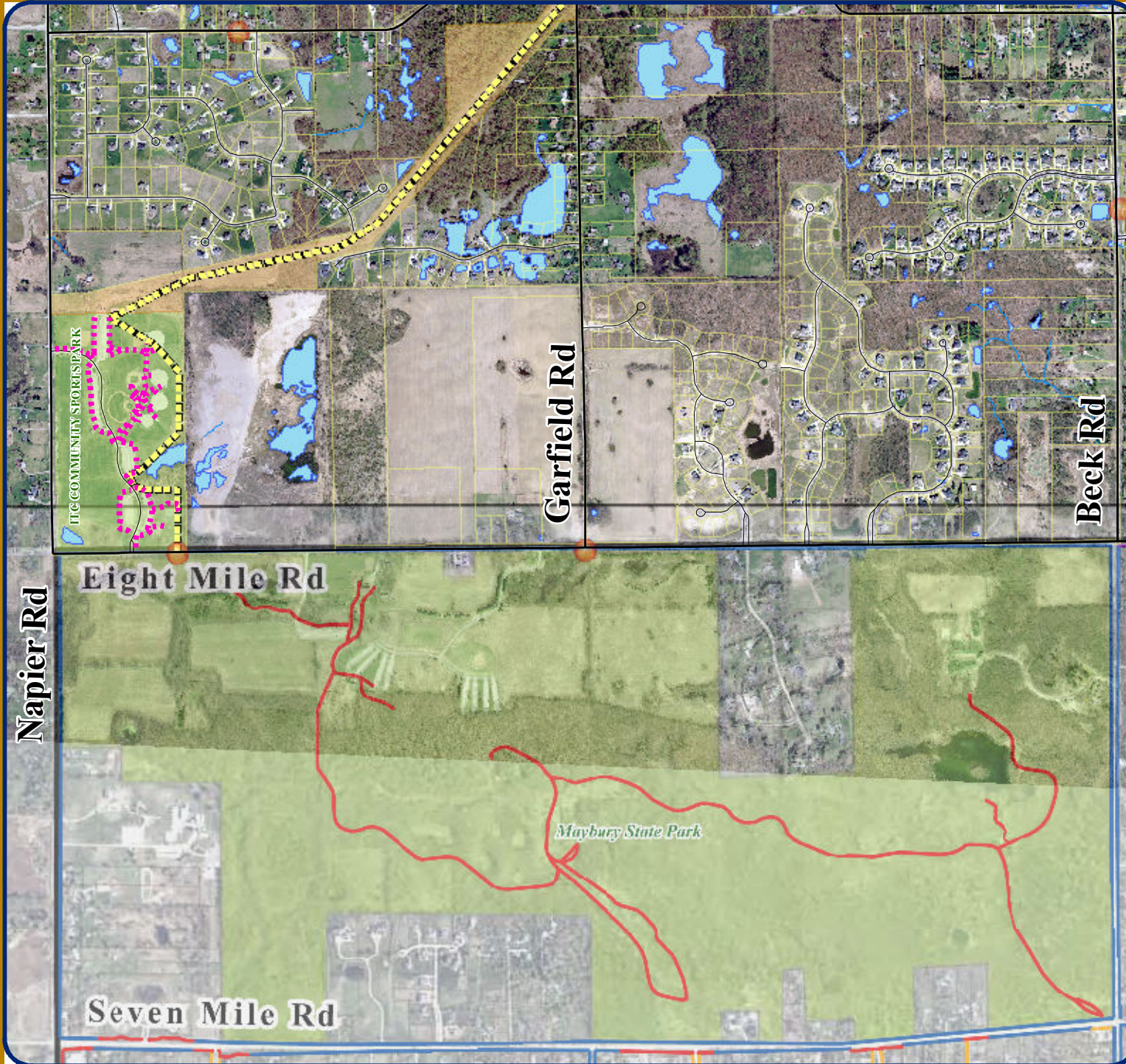
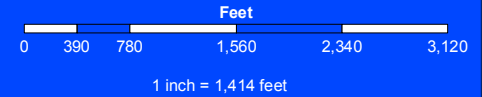
City of Novi Regional Pathway and Maybury Park Connection Discussion

January 2012



Map Legend

- Existing Regional Path
- Planned Regional Path
- Outside Novi Path
- Park Path
- PARKLAND



City of Novi

Dept. of Community Development
City Hall / Civic Center
45175 W Ten Mile Rd
Novi, MI 48375
cityofnovi.org

Map Author: Mark Spencer
Date: 1/5/12
Project: 2011 Maybury
Version #: 2.0

MAP INTERPRETATION NOTICE

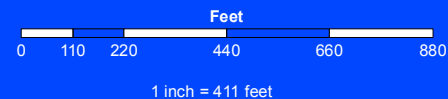
Map information depicted is not intended to replace or substitute for any official or primary source. This map was intended to meet National Map Accuracy Standards and use the most recent, accurate sources available to the people of the City of Novi. Boundary measurements and area calculations are approximate and should not be construed as survey measurements performed by a licensed Michigan Surveyor as defined in Michigan Public Act 132 of 1970 as amended. Please contact the City GIS Manager to confirm source and accuracy information related to this map.

ITC Community Sports Park



Legend

- Existing Sidewalks
- City Parks
- Ball Fields, Courts and other Facilities
- Restrooms
- Parking Lots



City of Novi

Dept. of Community Development
City Hall / Civic Center
45175 W Ten Mile Rd
Novi, MI 48375
cityofnovi.org

Map Author: Mark Spencer
Date: 1/5/12
Project: Sports Center
Version #: 1.0

MAP INTERPRETATION NOTICE

Map information depicted is not intended to replace or substitute for any official or primary source. This map was intended to meet National Map Accuracy Standards and use the most recent, accurate sources available to the people of the City of Novi. Boundary measurements and area calculations are approximate and should not be construed as survey measurements performed by a licensed Michigan Surveyor as defined in Michigan Public Act 132 of 1970 as amended. Please contact the City GIS Manager to confirm source and accuracy information related to this map.

Sports Park

Napier

ITC COMMUNITY SPORTS PARK

Eight Mile

