



Novi Safe Streets and Roads for All

Safe Streets and Roads for All Overview

FHWA Established Tasks

- Leadership Commitment and Goal Setting
- Planning Structure (SAPC)
- Safety Analysis
- Engagement and Collaboration
- Equity Considerations
- Policy and Process Changes
- Strategy and Project Selection

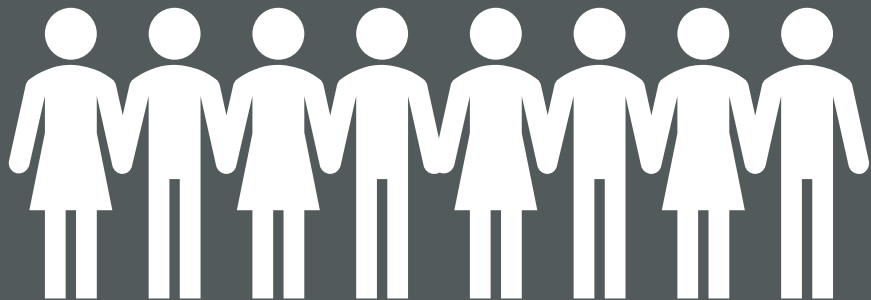
Leadership Commitment Statement

“The City of Novi strives towards zero traffic fatalities and serious injuries on its roads.”

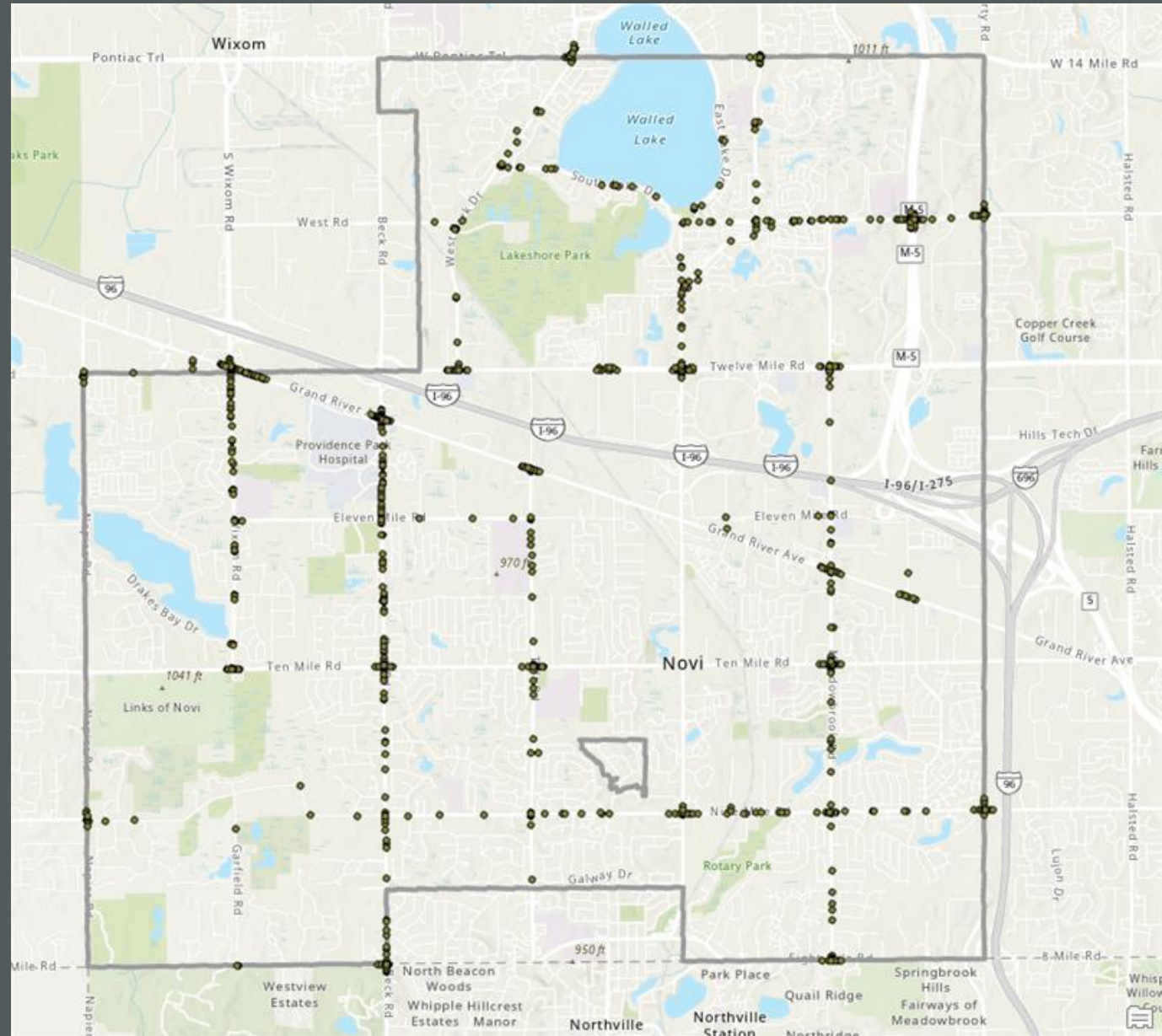
Engagement & Collaboration

Items to Consider:

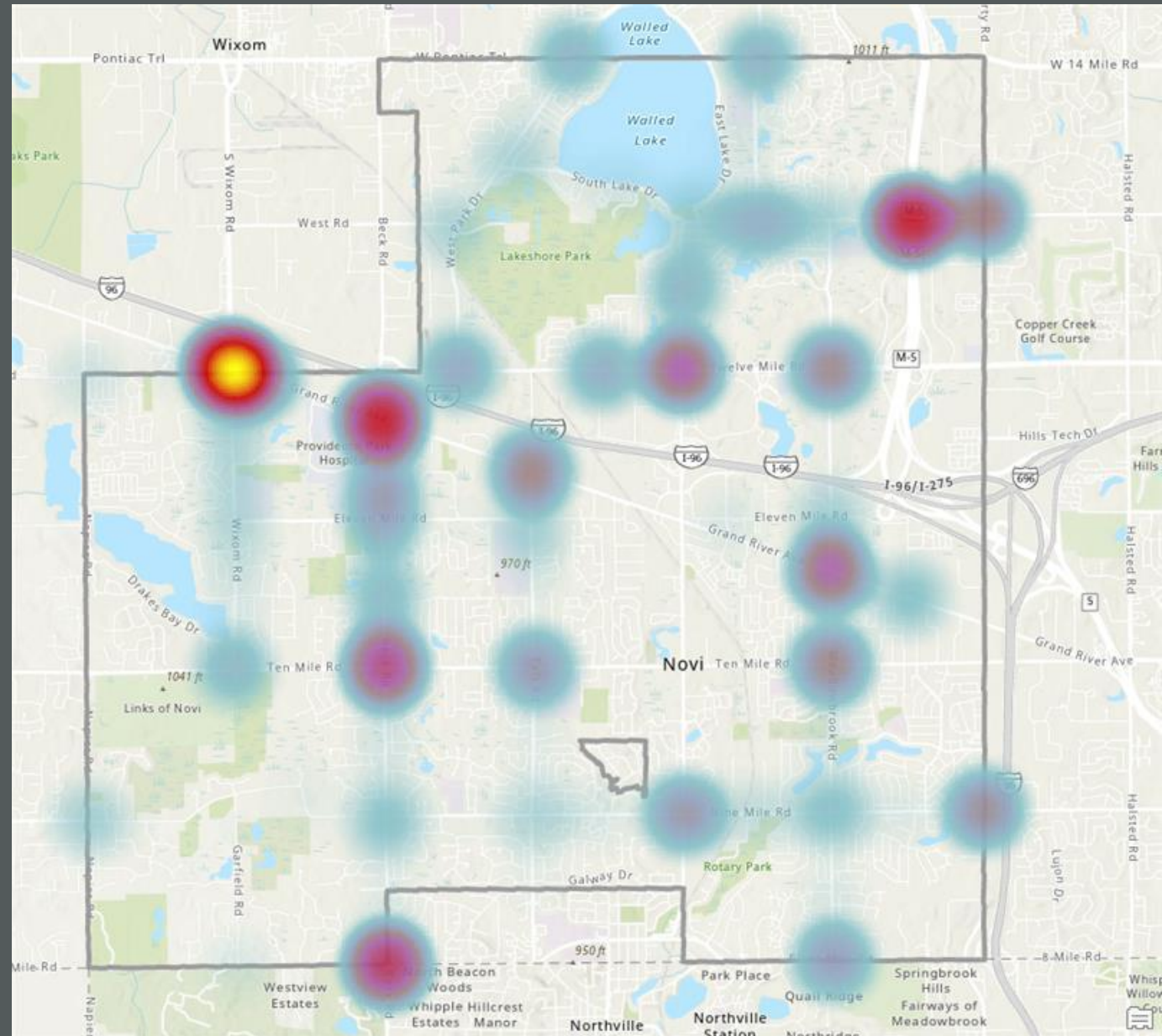
- Outreach through the Community Relations Department
- Public engagement objective and timing
 - Goal setting
 - Study location identification
 - Project development
 - Recommendations
- Survey presented at community meetings and posted online



Crashes (2022-2024)



Crashes (2022-2024)



Deliverables

1

Safety
Action Plan

2

Engagement &
Outreach Meetings

3

Years of
Crash Data

Deliverables

6

Priority
Locations



8

Systemic
Locations



Illustrative
Renderings

Opinion of
Construction
Cost



Technical
Memo



Crash Reduction
Factor
Recommendation



Crash
Analysis

12

High Risk
Locations



Priority Lists

Traffic
Improvement
Association (TIA)

High Severity

Vulnerable Road
Users

Target Crash
Type

Total Crash

High Severity
Crash Rate

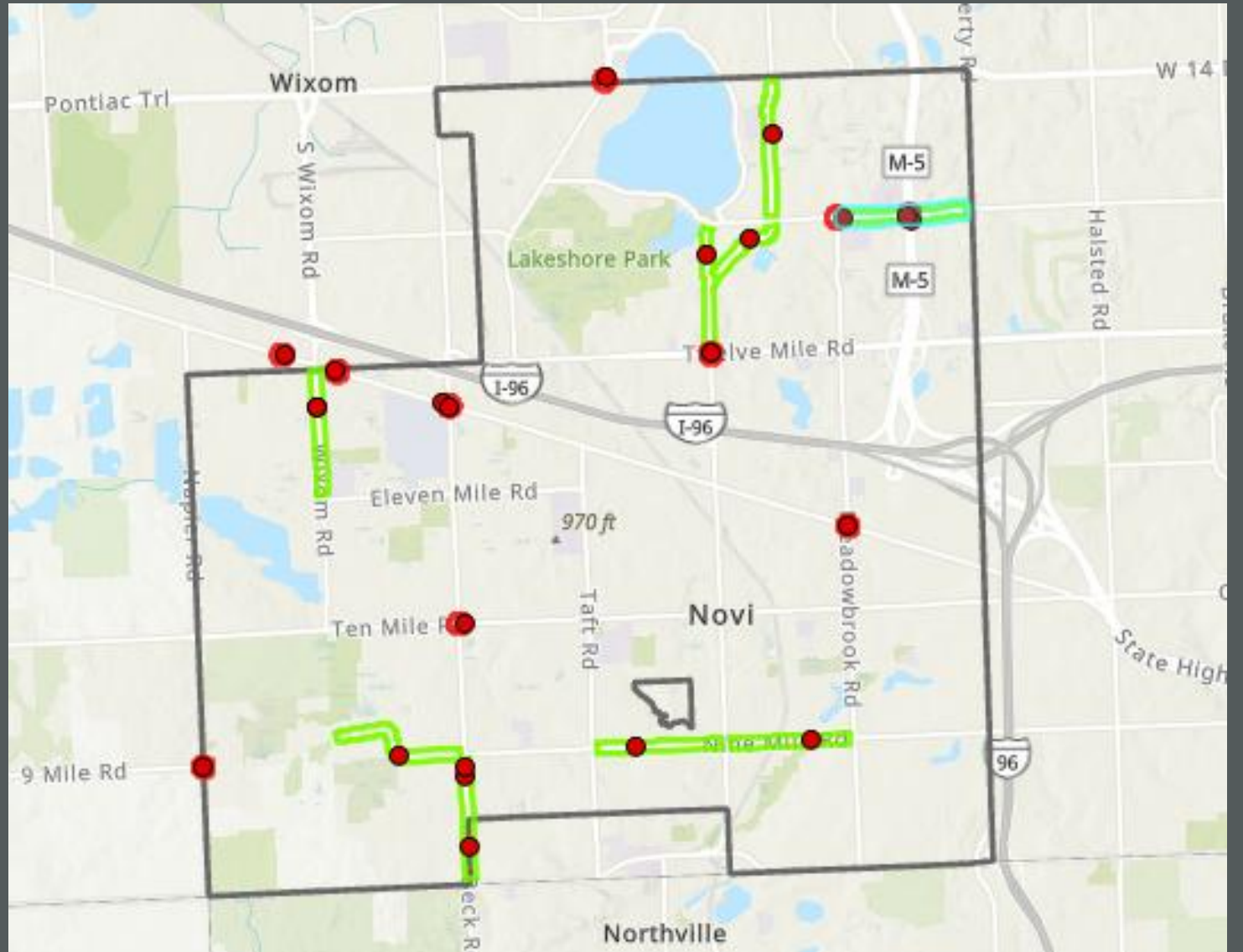
Total Crash Rate

Serious Injuries
by Equity Area

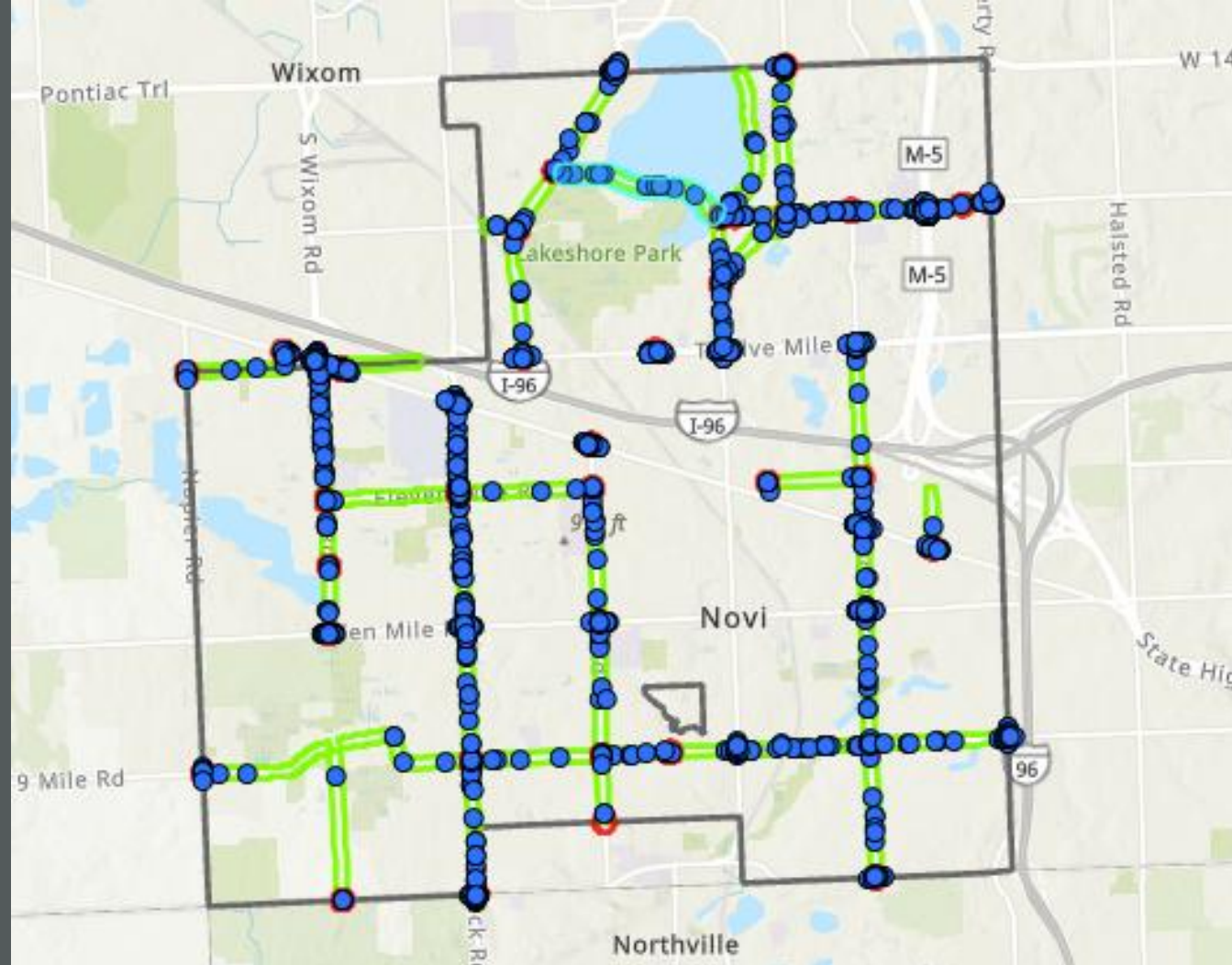
Crashes Near
Schools



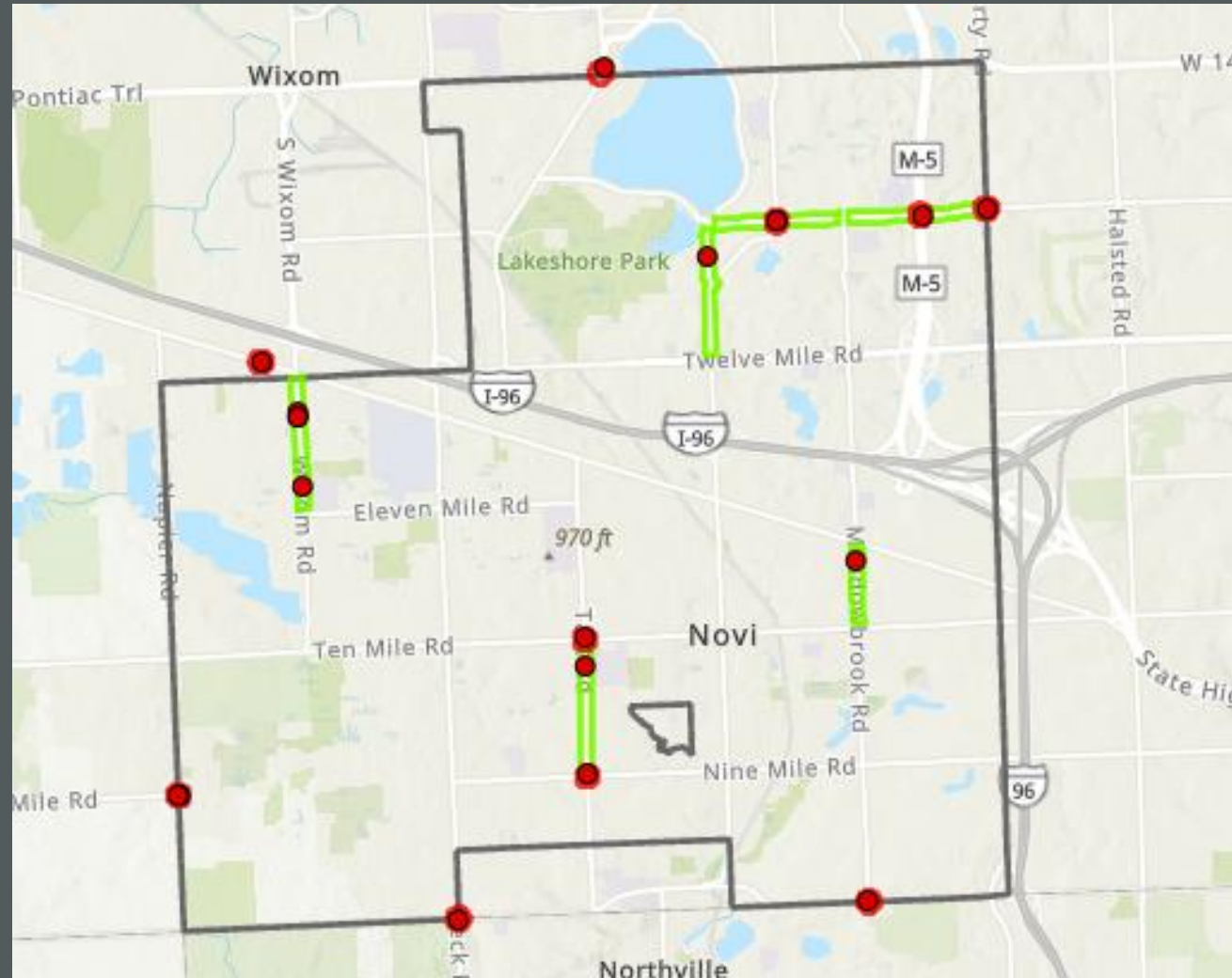
High Severity



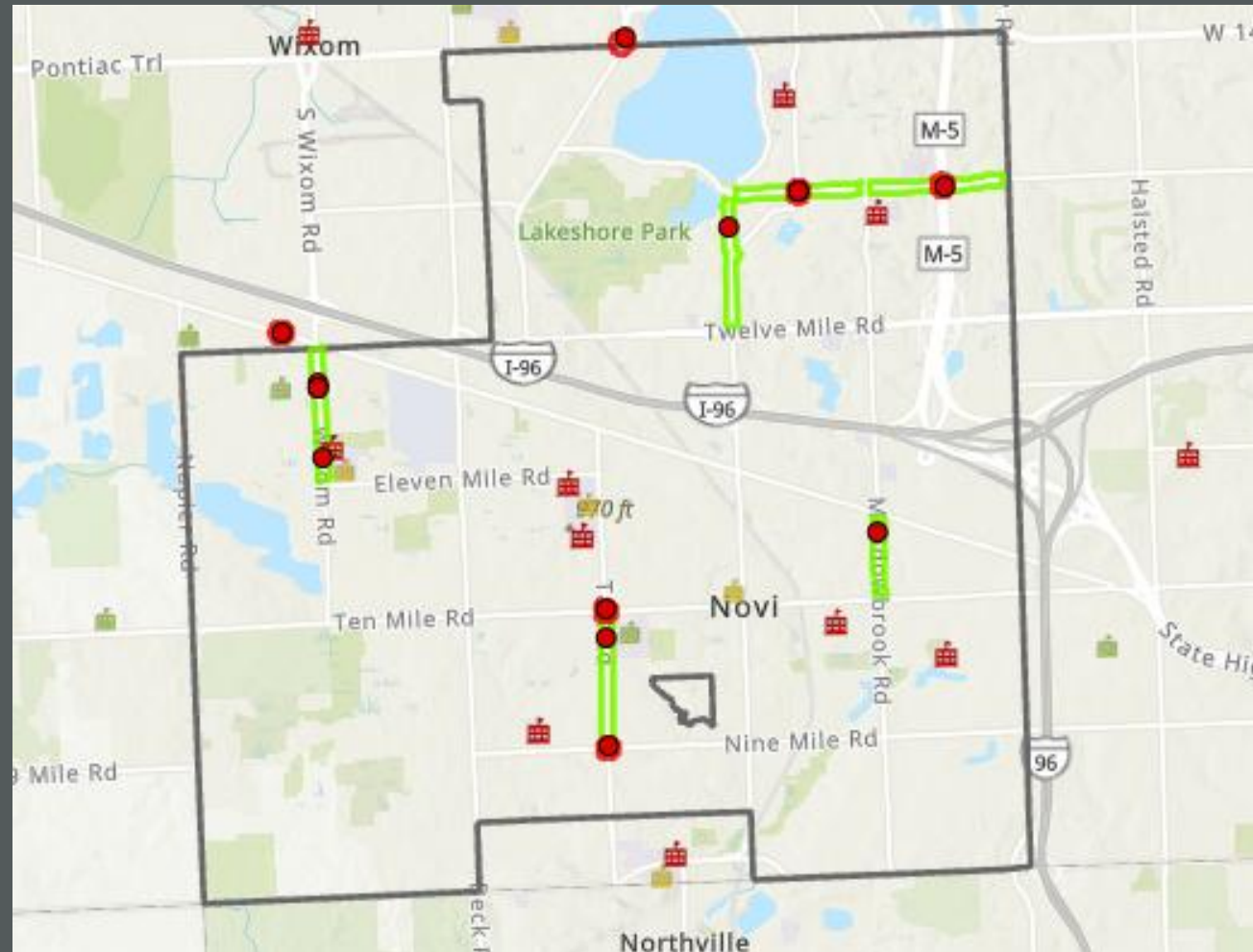
Total Crash



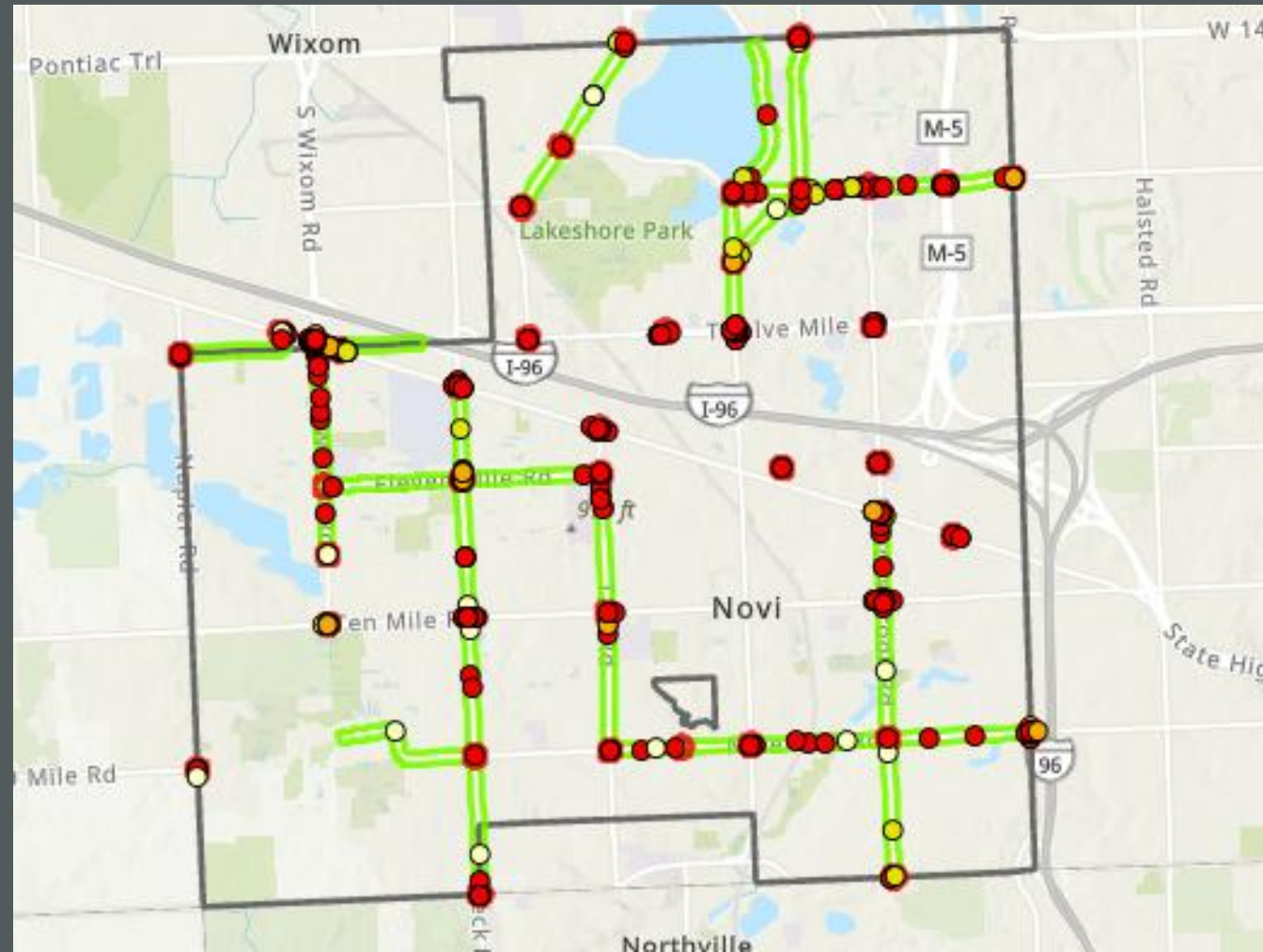
Vulnerable Road User



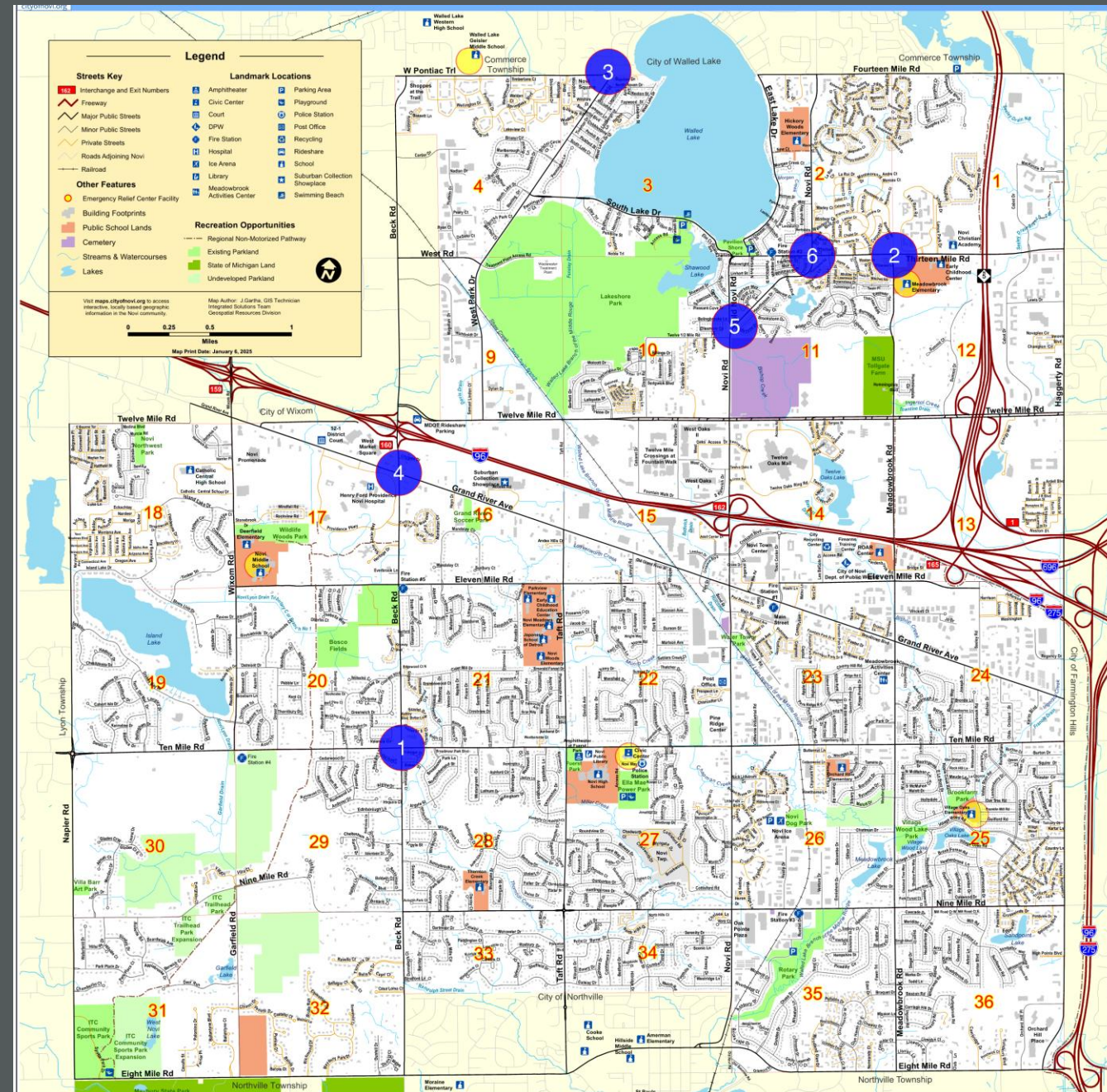
Vulnerable Road User Crashes Near Schools



Crash Type



Priority Locations



Priority Locations

1. 10 Mile at Beck

- #1 for targeted crash type, #5 on weighted list.

2. 13 Mile at Meadowbrook

- On high severity list and #8 on weighted list.

3. Pontiac Trail at West Park

- High on VRU and School lists, #9 on weighted list.

4. Beck at Grand River

- #2 on weighted list, appears on all lists.

5. Novi at Old Novi/Sandstone

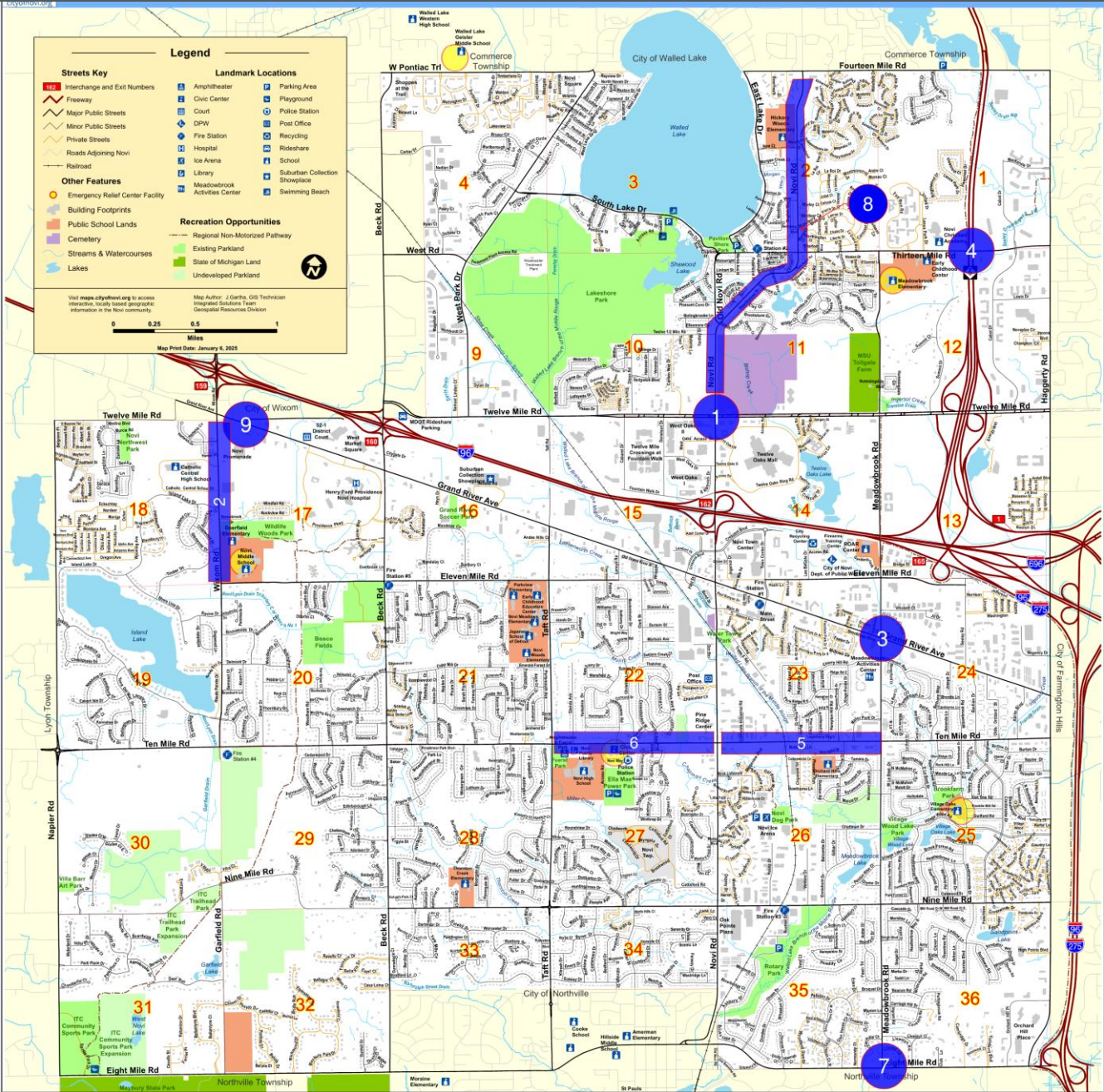
- Segment is high on weighted list and has planned upcoming project.

6. Novi at 13 Mile

- Segment is high on weighted list and has planned upcoming project.



High Risk Locations



High Risk Locations

1. 12 Mile at Novi

- #6 on weighted list, appears on all lists.

2. Wixom from 11 Mile to Grand River

- #1 for VRU crashes and weighted segment.

3. Grand River at Meadowbrook

- #3 on weighted lists, appears on all lists except VRU.

4. M-5 at 13 Mile

- #1 on weighted list, top 10 all lists.

5. 9 Mile from Novi to Meadowbrook

- #2 on weighted segments.

6. 9 Mile from Taft to Novi

- #3 on weighted segment.

7. 8 Mile at Meadowbrook

- #1 for crash rate.

8. Novi from 12 Mile to 14 Mile

- Segment high on weighted list and has upcoming project.

9. Grand River at 12 Mile

- #3 on weighted intersections.

Timeline

Winter 24-25

- Planning Structure
- Safety Analysis
- Policy & Process Changes

Spring 25

- Engagement & Collaboration
- Equity Considerations
- Strategy & Project Selection
- Planning Structure
- Policy & Process Changes

Summer 25

- Safety Analysis
- Equity Considerations

Fall 25

- Engagement & Collaboration
- Strategy & Project Selection



Thank You!