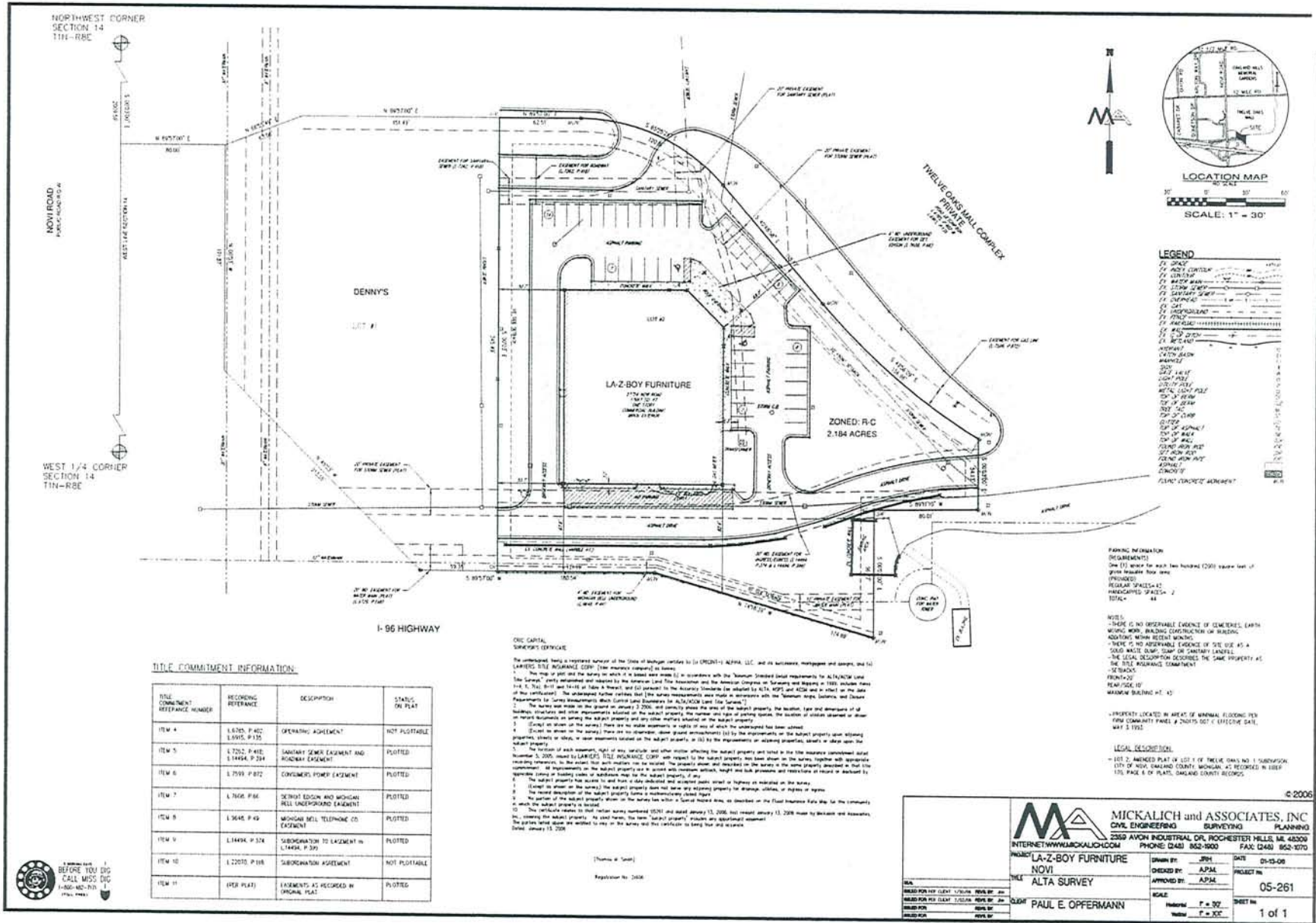


Jeffrey W. Senn
Founding Partner
12 - 2 - 2010

We are seeking the variance based on our current and near future traffic patterns, sales history and business model. We currently operate an 18,000 sq.ft. stand alone store (formerly Borders Books) in Oakbrook, Illinois. During that time in our 2 best months (Sept. & Oct. 2010) we had 268 and 239 transactions respectively. Being a standalone store our conversion rate is approximately 50%. Spread out over a 30 day period (17 customers a day) open 9 hours a day it is obvious that 40 parking spaces is more than enough to accommodate our business model and customer counts.

Former La-Z-Boy

Novi, MI



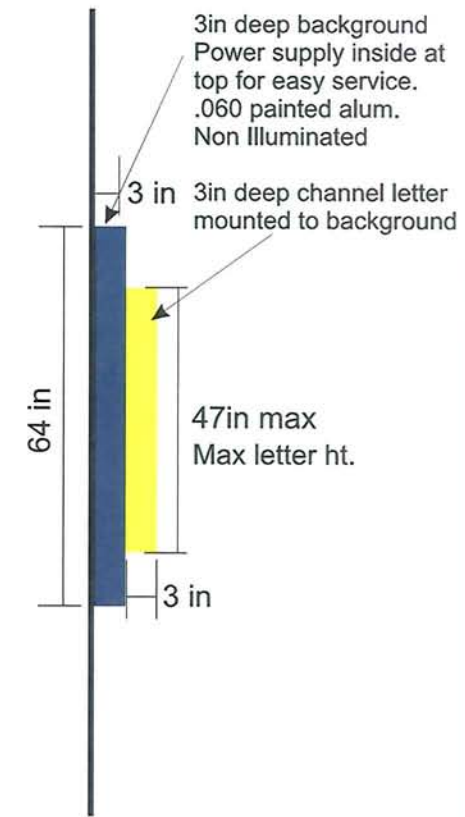
TITLE COMMITMENT INFORMATION

TITLE COMMITMENT REFERENCE NUMBER	RECORDING REFERENCE	DESCRIPTION	STATUS, OR PLAT
ITEM 4	L 6785, P 402 L 6995, P 135	OPERATING AGREEMENT	NOT PLOTTABLE
ITEM 5	L 7262, P 410 L 14454, P 334	SUBORDINATE ZONING EASEMENT AND ROADWAY EASEMENT	PLOTTED
ITEM 6	L 7593, P 872	CONSUMER POWER EASEMENT	PLOTTED
ITEM 7	L 7606, P 86	DETROIT EDISON AND MICHIGAN WELL UNDERGROUND EASEMENT	PLOTTED
ITEM 8	L 3646, P 49	MICHIGAN WELL TELEPHONE CO. EASEMENT	PLOTTED
ITEM 9	L 14494, P 374	SUBORDINATION TO EASEMENT - L 14494, P 393	PLOTTED
ITEM 10	L 22070, P 118	SUBORDINATION AGREEMENT	NOT PLOTTABLE
ITEM 11	PER PLAT	EASEMENTS AS RECORDED IN ORIGINAL PLAT	PLOTTED

ONE CAPITAL SURVEYORS OFFICE

The undersigned being a registered holder of the title of design services by (c) (2) (B) ALTA, LLC, and its successors, mortgagees and assigns, and (d) LAURENCE TITLE ASSURANCE CORP. (the insurance company) to issue:

The map of plat and the survey in which it is based were made (1) in accordance with the Michigan Standard (local requirements for ALTA/ACSM Land Boundary Surveys) established and adopted by the Michigan Land Title Association and the American Congress on Surveying and Mapping in 1985, including Rules 1-1, 1-2, 1-3, 1-4, 1-5, 1-6, 1-7, 1-8, 1-9, 1-10, 1-11, 1-12, 1-13, 1-14, 1-15, 1-16, 1-17, 1-18, 1-19, 1-20, 1-21, 1-22, 1-23, 1-24, 1-25, 1-26, 1-27, 1-28, 1-29, 1-30, 1-31, 1-32, 1-33, 1-34, 1-35, 1-36, 1-37, 1-38, 1-39, 1-40, 1-41, 1-42, 1-43, 1-44, 1-45, 1-46, 1-47, 1-48, 1-49, 1-50, 1-51, 1-52, 1-53, 1-54, 1-55, 1-56, 1-57, 1-58, 1-59, 1-60, 1-61, 1-62, 1-63, 1-64, 1-65, 1-66, 1-67, 1-68, 1-69, 1-70, 1-71, 1-72, 1-73, 1-74, 1-75, 1-76, 1-77, 1-78, 1-79, 1-80, 1-81, 1-82, 1-83, 1-84, 1-85, 1-86, 1-87, 1-88, 1-89, 1-90, 1-91, 1-92, 1-93, 1-94, 1-95, 1-96, 1-97, 1-98, 1-99, 1-100, 1-101, 1-102, 1-103, 1-104, 1-105, 1-106, 1-107, 1-108, 1-109, 1-110, 1-111, 1-112, 1-113, 1-114, 1-115, 1-116, 1-117, 1-118, 1-119, 1-120, 1-121, 1-122, 1-123, 1-124, 1-125, 1-126, 1-127, 1-128, 1-129, 1-130, 1-131, 1-132, 1-133, 1-134, 1-135, 1-136, 1-137, 1-138, 1-139, 1-140, 1-141, 1-142, 1-143, 1-144, 1-145, 1-146, 1-147, 1-148, 1-149, 1-150, 1-151, 1-152, 1-153, 1-154, 1-155, 1-156, 1-157, 1-158, 1-159, 1-160, 1-161, 1-162, 1-163, 1-164, 1-165, 1-166, 1-167, 1-168, 1-169, 1-170, 1-171, 1-172, 1-173, 1-174, 1-175, 1-176, 1-177, 1-178, 1-179, 1-180, 1-181, 1-182, 1-183, 1-184, 1-185, 1-186, 1-187, 1-188, 1-189, 1-190, 1-191, 1-192, 1-193, 1-194, 1-195, 1-196, 1-197, 1-198, 1-199, 1-200, 1-201, 1-202, 1-203, 1-204, 1-205, 1-206, 1-207, 1-208, 1-209, 1-210, 1-211, 1-212, 1-213, 1-214, 1-215, 1-216, 1-217, 1-218, 1-219, 1-220, 1-221, 1-222, 1-223, 1-224, 1-225, 1-226, 1-227, 1-228, 1-229, 1-230, 1-231, 1-232, 1-233, 1-234, 1-235, 1-236, 1-237, 1-238, 1-239, 1-240, 1-241, 1-242, 1-243, 1-244, 1-245, 1-246, 1-247, 1-248, 1-249, 1-250, 1-251, 1-252, 1-253, 1-254, 1-255, 1-256, 1-257, 1-258, 1-259, 1-260, 1-261, 1-262, 1-263, 1-264, 1-265, 1-266, 1-267, 1-268, 1-269, 1-270, 1-271, 1-272, 1-273, 1-274, 1-275, 1-276, 1-277, 1-278, 1-279, 1-280, 1-281, 1-282, 1-283, 1-284, 1-285, 1-286, 1-287, 1-288, 1-289, 1-290, 1-291, 1-292, 1-293, 1-294, 1-295, 1-296, 1-297, 1-298, 1-299, 1-300, 1-301, 1-302, 1-303, 1-304, 1-305, 1-306, 1-307, 1-308, 1-309, 1-310, 1-311, 1-312, 1-313, 1-314, 1-315, 1-316, 1-317, 1-318, 1-319, 1-320, 1-321, 1-322, 1-323, 1-324, 1-325, 1-326, 1-327, 1-328, 1-329, 1-330, 1-331, 1-332, 1-333, 1-334, 1-335, 1-336, 1-337, 1-338, 1-339, 1-340, 1-341, 1-342, 1-343, 1-344, 1-345, 1-346, 1-347, 1-348, 1-349, 1-350, 1-351, 1-352, 1-353, 1-354, 1-355, 1-356, 1-357, 1-358, 1-359, 1-360, 1-361, 1-362, 1-363, 1-364, 1-365, 1-366, 1-367, 1-368, 1-369, 1-370, 1-371, 1-372, 1-373, 1-374, 1-375, 1-376, 1-377, 1-378, 1-379, 1-380, 1-381, 1-382, 1-383, 1-384, 1-385, 1-386, 1-387, 1-388, 1-389, 1-390, 1-391, 1-392, 1-393, 1-394, 1-395, 1-396, 1-397, 1-398, 1-399, 1-400, 1-401, 1-402, 1-403, 1-404, 1-405, 1-406, 1-407, 1-408, 1-409, 1-410, 1-411, 1-412, 1-413, 1-414, 1-415, 1-416, 1-417, 1-418, 1-419, 1-420, 1-421, 1-422, 1-423, 1-424, 1-425, 1-426, 1-427, 1-428, 1-429, 1-430, 1-431, 1-432, 1-433, 1-434, 1-435, 1-436, 1-437, 1-438, 1-439, 1-440, 1-441, 1-442, 1-443, 1-444, 1-445, 1-446, 1-447, 1-448, 1-449, 1-450, 1-451, 1-452, 1-453, 1-454, 1-455, 1-456, 1-457, 1-458, 1-459, 1-460, 1-461, 1-462, 1-463, 1-464, 1-465, 1-466, 1-467, 1-468, 1-469, 1-470, 1-471, 1-472, 1-473, 1-474, 1-475, 1-476, 1-477, 1-478, 1-479, 1-480, 1-481, 1-482, 1-483, 1-484, 1-485, 1-486, 1-487, 1-488, 1-489, 1-490, 1-491, 1-492, 1-493, 1-494, 1-495, 1-496, 1-497, 1-498, 1-499, 1-500, 1-501, 1-502, 1-503, 1-504, 1-505, 1-506, 1-507, 1-508, 1-509, 1-510, 1-511, 1-512, 1-513, 1-514, 1-515, 1-516, 1-517, 1-518, 1-519, 1-520, 1-521, 1-522, 1-523, 1-524, 1-525, 1-526, 1-527, 1-528, 1-529, 1-530, 1-531, 1-532, 1-533, 1-534, 1-535, 1-536, 1-537, 1-538, 1-539, 1-540, 1-541, 1-542, 1-543, 1-544, 1-545, 1-546, 1-547, 1-548, 1-549, 1-550, 1-551, 1-552, 1-553, 1-554, 1-555, 1-556, 1-557, 1-558, 1-559, 1-560, 1-561, 1-562, 1-563, 1-564, 1-565, 1-566, 1-567, 1-568, 1-569, 1-570, 1-571, 1-572, 1-573, 1-574, 1-575, 1-576, 1-577, 1-578, 1-579, 1-580, 1-581, 1-582, 1-583, 1-584, 1-585, 1-586, 1-587, 1-588, 1-589, 1-590, 1-591, 1-592, 1-593, 1-594, 1-595, 1-596, 1-597, 1-598, 1-599, 1-600, 1-601, 1-602, 1-603, 1-604, 1-605, 1-606, 1-607, 1-608, 1-609, 1-610, 1-611, 1-612, 1-613, 1-614, 1-615, 1-616, 1-617, 1-618, 1-619, 1-620, 1-621, 1-622, 1-623, 1-624, 1-625, 1-626, 1-627, 1-628, 1-629, 1-630, 1-631, 1-632, 1-633, 1-634, 1-635, 1-636, 1-637, 1-638, 1-639, 1-640, 1-641, 1-642, 1-643, 1-644, 1-645, 1-646, 1-647, 1-648, 1-649, 1-650, 1-651, 1-652, 1-653, 1-654, 1-655, 1-656, 1-657, 1-658, 1-659, 1-660, 1-661, 1-662, 1-663, 1-664, 1-665, 1-666, 1-667, 1-668, 1-669, 1-670, 1-671, 1-672, 1-673, 1-674, 1-675, 1-676, 1-677, 1-678, 1-679, 1-680, 1-681, 1-682, 1-683, 1-684, 1-685, 1-686, 1-687, 1-688, 1-689, 1-690, 1-691, 1-692, 1-693, 1-694, 1-695, 1-696, 1-697, 1-698, 1-699, 1-700, 1-701, 1-702, 1-703, 1-704, 1-705, 1-706, 1-707, 1-708, 1-709, 1-710, 1-711, 1-712, 1-713, 1-714, 1-715, 1-716, 1-717, 1-718, 1-719, 1-720, 1-721, 1-722, 1-723, 1-724, 1-725, 1-726, 1-727, 1-728, 1-729, 1-730, 1-731, 1-732, 1-733, 1-734, 1-735, 1-736, 1-737, 1-738, 1-739, 1-740, 1-741, 1-742, 1-743, 1-744, 1-745, 1-746, 1-747, 1-748, 1-749, 1-750, 1-751, 1-752, 1-753, 1-754, 1-755, 1-756, 1-757, 1-758, 1-759, 1-760, 1-761, 1-762, 1-763, 1-764, 1-765, 1-766, 1-767, 1-768, 1-769, 1-770, 1-771, 1-772, 1-773, 1-774, 1-775, 1-776, 1-777, 1-778, 1-779, 1-780, 1-781, 1-782, 1-783, 1-784, 1-785, 1-786, 1-787, 1-788, 1-789, 1-790, 1-791, 1-792, 1-793, 1-794, 1-795, 1-796, 1-797, 1-798, 1-799, 1-800, 1-801, 1-802, 1-803, 1-804, 1-805, 1-806, 1-807, 1-808, 1-809, 1-810, 1-811, 1-812, 1-813, 1-814, 1-815, 1-816, 1-817, 1-818, 1-819, 1-820, 1-821, 1-822, 1-823, 1-824, 1-825, 1-826, 1-827, 1-828, 1-829, 1-830, 1-831, 1-832, 1-833, 1-834, 1-835, 1-836, 1-837, 1-838, 1-839, 1-840, 1-841, 1-842, 1-843, 1-844, 1-845, 1-846, 1-847, 1-848, 1-849, 1-850, 1-851, 1-852, 1-853, 1-854, 1-855, 1-856, 1-857, 1-858, 1-859, 1-860, 1-861, 1-862, 1-863, 1-864, 1-865, 1-866, 1-867, 1-868, 1-869, 1-870, 1-871, 1-872, 1-873, 1-874, 1-875, 1-876, 1-877, 1-878, 1-879, 1-880, 1-881, 1-882, 1-883, 1-884, 1-885, 1-886, 1-887, 1-888, 1-889, 1-890, 1-891, 1-892, 1-893, 1-894, 1-895, 1-896, 1-897, 1-898, 1-899, 1-900, 1-901, 1-902, 1-903, 1-904, 1-905, 1-906, 1-907, 1-908, 1-909, 1-910, 1-911, 1-912, 1-913, 1-914, 1-915, 1-916, 1-917, 1-918, 1-919, 1-920, 1-921, 1-922, 1-923, 1-924, 1-925, 1-926, 1-927, 1-928, 1-929, 1-930, 1-931, 1-932, 1-933, 1-934, 1-935, 1-936, 1-937, 1-938, 1-939, 1-940, 1-941, 1-942, 1-943, 1-944, 1-945, 1-946, 1-947, 1-948, 1-949, 1-950, 1-951, 1-952, 1-953, 1-954, 1-955, 1-956, 1-957, 1-958, 1-959, 1-960, 1-961, 1-962, 1-963, 1-964, 1-965, 1-966, 1-967, 1-968, 1-969, 1-970, 1-971, 1-972, 1-973, 1-974, 1-975, 1-976, 1-977, 1-978, 1-979, 1-980, 1-981, 1-982, 1-983, 1-984, 1-985, 1-986, 1-987, 1-988, 1-989, 1-990, 1-991, 1-992, 1-993, 1-994, 1-995, 1-996, 1-997, 1-998, 1-999, 1-1000, 1-1001, 1-1002, 1-1003, 1-1004, 1-1005, 1-1006, 1-1007, 1-1008, 1-1009, 1-1010, 1-1011, 1-1012, 1-1013, 1-1014, 1-1015, 1-1016, 1-1017, 1-1018, 1-1019, 1-1020, 1-1021, 1-1022, 1-1023, 1-1024, 1-1025, 1-1026, 1-1027, 1-1028, 1-1029, 1-1030, 1-1031, 1-1032, 1-1033, 1-1034, 1-1035, 1-1036, 1-1037, 1-1038, 1-1039, 1-1040, 1-1041, 1-1042, 1-1043, 1-1044, 1-1045, 1-1046, 1-1047, 1-1048, 1-1049, 1-1050, 1-1051, 1-1052, 1-1053, 1-1054, 1-1055, 1-1056, 1-1057, 1-1058, 1-1059, 1-1060, 1-1061, 1-1062, 1-1063, 1-1064, 1-1065, 1-1066, 1-1067, 1-1068, 1-1069, 1-1070, 1-1071, 1-1072, 1-1073, 1-1074, 1-1075, 1-1076, 1-1077, 1-1078, 1-1079, 1-1080, 1-1081, 1-1082, 1-1083, 1-1084, 1-1085, 1-1086, 1-1087, 1-1088, 1-1089, 1-1090, 1-1091, 1-1092, 1-1093, 1-1094, 1-1095, 1-1096, 1-1097, 1-1098, 1-1099, 1-1100, 1-1101, 1-1102, 1-1103, 1-1104, 1-1105, 1-1106, 1-1107, 1-1108, 1-1109, 1-1110, 1-1111, 1-1112, 1-1113, 1-1114, 1-1115, 1-1116, 1-1117, 1-1118, 1-1119, 1-1120, 1-1121, 1-1122, 1-1123, 1-1124, 1-1125, 1-1126, 1-1127, 1-1128, 1-1129, 1-1130, 1-1131, 1-1132, 1-1133, 1-1134, 1-1135, 1-1136, 1-1137, 1-1138, 1-1139, 1-1140, 1-1141, 1-1142, 1-1143, 1-1144, 1-1145, 1-1146, 1-1147, 1-1148, 1-1149, 1-1150, 1-1151, 1-1152, 1-1153, 1-1154, 1-1155, 1-1156, 1-1157, 1-1158, 1-1159, 1-1160, 1-1161, 1-1162, 1-1163, 1-1164, 1-1165, 1-1166, 1-1167, 1-1168, 1-1169, 1-1170, 1-1171, 1-1172, 1-1173, 1-1174, 1-1175, 1-1176, 1-1177, 1-1178, 1-1179, 1-1180, 1-1181, 1-1182, 1-1183, 1-1184, 1-1185, 1-1186, 1-1187, 1-1188, 1-1189, 1-1190, 1-1191, 1-1192, 1-1193, 1-1194, 1-1195, 1-1196, 1-1197, 1-1198, 1-1199, 1-1200, 1-1201, 1-1202, 1-1203, 1-1204, 1-1205, 1-1206, 1-1207, 1-1208, 1-1209, 1-1210, 1-1211, 1-1212, 1-1213, 1-1214, 1-1215, 1-1216, 1-1217, 1-1218, 1-1219, 1-1220, 1-1221, 1-1222, 1-1223, 1-1224, 1-1225, 1-1226, 1-1227, 1-1228, 1-1229, 1-1230, 1-1231, 1-1232, 1-1233, 1-1234, 1-1235, 1-1236, 1-1237, 1-1238, 1-1239, 1-1240, 1-1241, 1-1242, 1-1243, 1-1244, 1-1245, 1-1246, 1-1247, 1-1248, 1-1249, 1-1250, 1-1251, 1-1252, 1-1253, 1-1254, 1-1255, 1-1256, 1-1257, 1-1258, 1-1259, 1-1260, 1-1261, 1-1262, 1-1263, 1-1264, 1-1265, 1-1266, 1-1267, 1-1268, 1-1269, 1-1270, 1-1271, 1-1272, 1-1273, 1-1274, 1-1275, 1-1276, 1-1277, 1-1278, 1-1279, 1-1280, 1-1281, 1-1282, 1-1283, 1-1284, 1-1285, 1-1286, 1-1287, 1-1288, 1-1289, 1-1290, 1-1291, 1-1292, 1-1293, 1-1294, 1-1295, 1-1296, 1-1297, 1-1298, 1-1299, 1-1300, 1-1301, 1-1302, 1-1303, 1-1304, 1-1305, 1-1306, 1-1307, 1-1308, 1-1309, 1-1310, 1-1311, 1-1312, 1-1313, 1-1314, 1-1315, 1-1316, 1-1317, 1-1318, 1-1319, 1-1320, 1-1321, 1-1322, 1-1323, 1-1324, 1-1325, 1-1326, 1-1327, 1-1328, 1-1329, 1-1330, 1-1331, 1-1332, 1-1333, 1-1334, 1-1335, 1-1336, 1-1337, 1-1338, 1-1339, 1-1340, 1-1341, 1-1342, 1-1343, 1-1344, 1-1345, 1-1346, 1-1347, 1-1348, 1-1349, 1-1350, 1-1351, 1-1352, 1-1353, 1-1354, 1-1355, 1-1356, 1-1357, 1-1358, 1-1359, 1-1360, 1-1361, 1-1362, 1-1363, 1-1364, 1-1365, 1-1366, 1-1367, 1-1368, 1-1369, 1-1370, 1-1371, 1-1372, 1-1373, 1-1374, 1-1375, 1-1376, 1-1377, 1-1378, 1-1379, 1-1380, 1-1381, 1-1382, 1-1383, 1-1384, 1-1385, 1-1386, 1-1387, 1-1388, 1-1389, 1-1390, 1-1391, 1-1392, 1-1393, 1-1394, 1-1395, 1-1396, 1-1397, 1-1398, 1-1399, 1-1400, 1-1401, 1-1402, 1-1403, 1-1404, 1-1405, 1-1406, 1-1407, 1-1408, 1-1409, 1-1410, 1-1411, 1-1412, 1-1413, 1-1414, 1-1415, 1-1416, 1-1417, 1-1418, 1-1419, 1-1420, 1-1421, 1-1422, 1-1423, 1-1424, 1-1425, 1-1426, 1-1427, 1-1428, 1-1429, 1-1430, 1-1431, 1-1432, 1-1433, 1-1434, 1-1435, 1-1436, 1-1437, 1-1438, 1-1439, 1-1440, 1-1441, 1-1442, 1-1443, 1-1444, 1-1445, 1-1446, 1-1447, 1-1448, 1-1449, 1-1450, 1-1451, 1-1452, 1-1453, 1-1454, 1-1455, 1-1456, 1-1457, 1-1458, 1-1459, 1-1460, 1-1461, 1-1462, 1-1463, 1-1464, 1-1465, 1-1466, 1-1467, 1-1468, 1-1469, 1-1470, 1-1471, 1-1472, 1-1473, 1-1474, 1-1475, 1-1476, 1-1477, 1-1478, 1-1479, 1-1480, 1-1481, 1-1482, 1-1483, 1-1484, 1-1485, 1-1486, 1-1487, 1-1488, 1-1489, 1-1490, 1-1491, 1-1492, 1-1493, 1-1494, 1-1495, 1-1496, 1-1497, 1-1498, 1-1499, 1-1500, 1-1501, 1-1502, 1-1503, 1-1504, 1-1505, 1-1506, 1-1507, 1-1508, 1-1509, 1-1510, 1-1511, 1-1512, 1-1513, 1-1514, 1-1515, 1-1516, 1-1517, 1-1518, 1-1519, 1-1520, 1-1521, 1-1522, 1-1523, 1-1524, 1-1525, 1-1526, 1-1527, 1-1528, 1-1529, 1-1530, 1-1531, 1-1532, 1-1533, 1-1534, 1-1535, 1-1536, 1-1537, 1-1538, 1-1539, 1-1540, 1-1541, 1-1542, 1-1543, 1-1544, 1-1545, 1-1546, 1-1547, 1-1548, 1-1549,

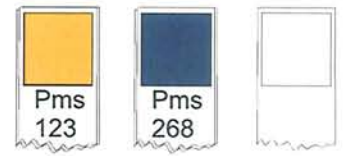


Sign Area: 104 sq ft

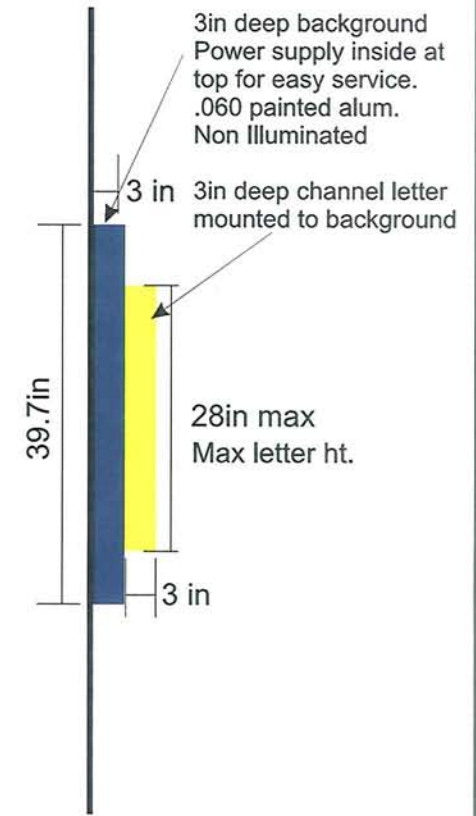
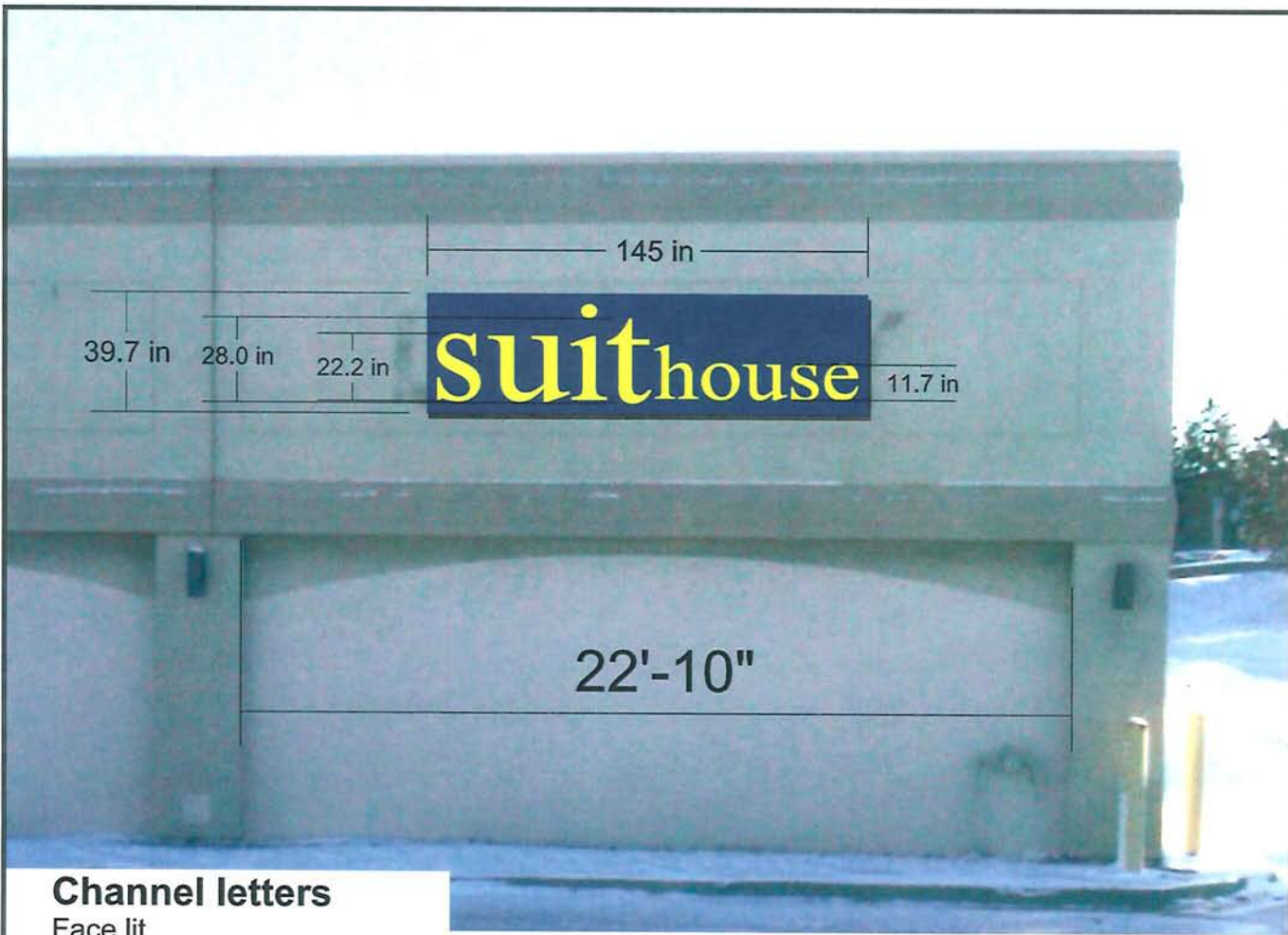
Channel letters

- Face lit
- Yellow face
- yellow trim and return
- Trim needs to be painted same color yellow as return
- White LED's illumination.
- LED transformer to be inside
- Blue background.
- Background NOT Illuminated

Side elevation



<p>Chicago Sign Group, llc 305 Albert Drive Vernon Hills, IL 60061 847.899.9021 www.ChicagoSignGroup.com David@ChicagoSignGroup.com</p>	<p>Customer: suitehouse 324 s.route 59. Naperville,illinois 60540</p>	<p>Location: Suitehouse Jeff Senn 27754 novi rd. Novi,michigan 48377 517-414-6611</p>	<p>Customer Approval _____</p> <p>Landlord Approval _____</p>	<p>© Copyright 2010 by Chicago Sign Group, llc All designs presented are the sole property of Chicago Sign Group, llc and may not be reproduced in part or in whole without written permission.</p>
---	---	---	---	--



Side elevation

Channel letters

- Face lit
- Yellow face
- yellow trim and return
- Trim needs to be painted same color yellow as return
- White LED's illumination.
- LED transformer to be inside
- Blue background.
- Background NOT Illuminated

sign area 40 sq ft



<p>Chicago Sign Group, llc 305 Albert Drive Vernon Hills, IL 60061 847.899.9021 www.ChicagoSignGroup.com David@ChicagoSignGroup.com</p>	<p>Customer: suitehouse 324 s.route 59. Naperville,illinois 60540</p>	<p>Location: Suitehouse Jeff Senn 27754 novi rd. Novi,michigan 48377 517-414-6611</p>	<p>Customer Approval _____</p> <p>Landlord Approval _____</p>	<p>© Copyright 2010 by Chicago Sign Group, llc All designs presented are the sole property of Chicago Sign Group, llc and may not be reproduced in part or in whole without written permission.</p>
---	---	---	---	--

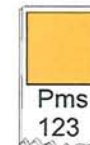


12 sq ft existing sign

- new faces
- double faced
- illuminated

Face Change only

- remove existing lexan face
- replace with new with new vinyl lettering as shown



Chicago Sign Group, llc

305 Albert Drive
Vernon Hills, IL 60061
847.899.9021
www.ChicagoSignGroup.com
David@ChicagoSignGroup.com

Customer:

suitehouse
324 s.route 59.
Naperville,illinois 60540

Location:

Suitehouse
Jeff Senn
27754 novi rd.
Novi,michigan 48377
517-414-6611

Customer Approval

Landlord Approval

© Copyright 2010
by Chicago Sign
Group, llc
All designs presented
are the sole property
of Chicago Sign Group,
llc and may not be
reproduced in part
or in whole without
written permission.