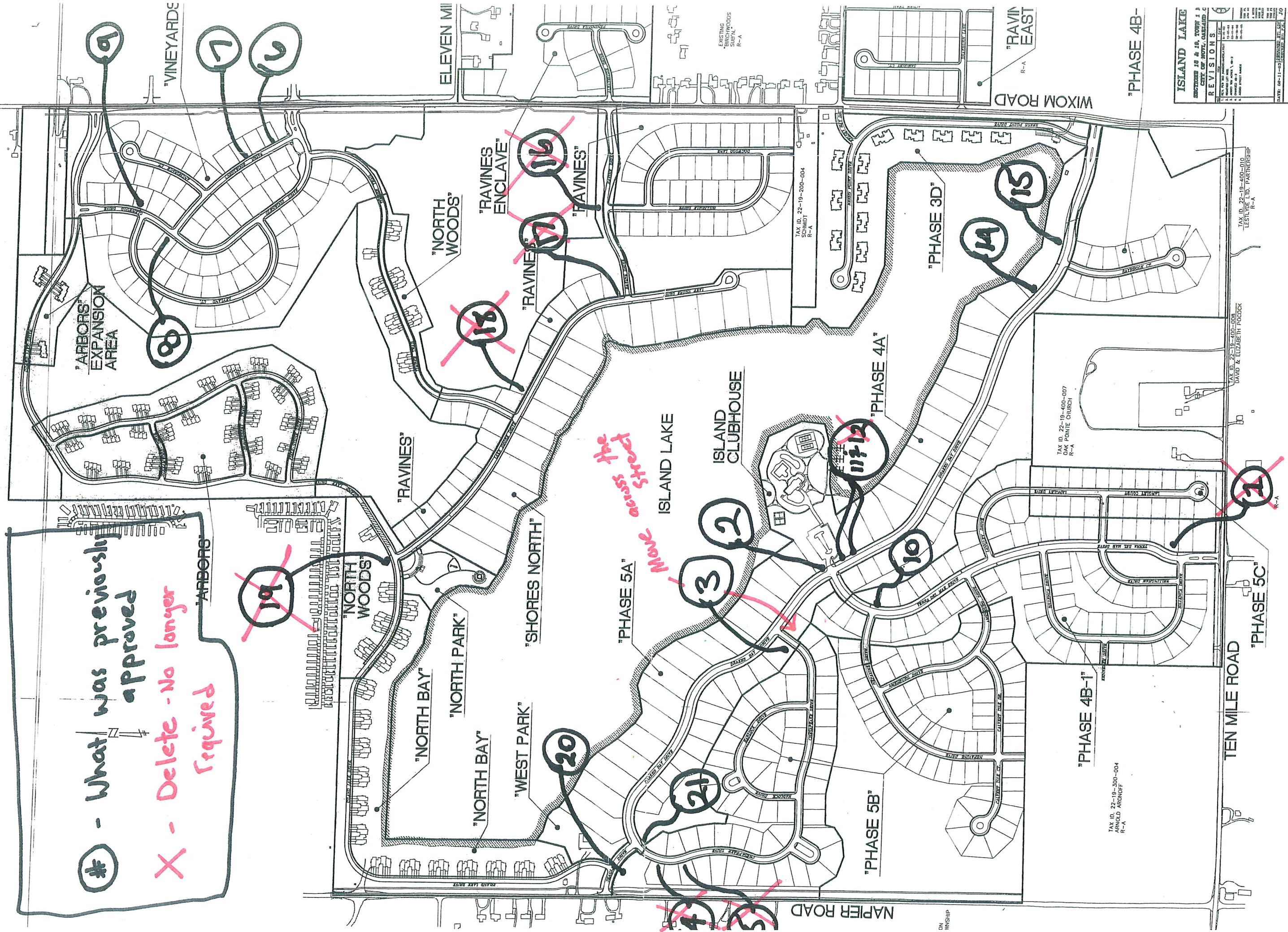


- What was previously approved
 X - Delete - No longer required



ISLAND LAKE	
SUBMITTED TO & BY: TOWN OF ISLAND LAKE	
DATE: 08-11-10	
REVISIONS	
1	REVISED PER COMMENTS
2	REVISED PER COMMENTS
3	REVISED PER COMMENTS
4	REVISED PER COMMENTS
5	REVISED PER COMMENTS
6	REVISED PER COMMENTS
7	REVISED PER COMMENTS
8	REVISED PER COMMENTS
9	REVISED PER COMMENTS
10	REVISED PER COMMENTS
11	REVISED PER COMMENTS
12	REVISED PER COMMENTS
13	REVISED PER COMMENTS
14	REVISED PER COMMENTS
15	REVISED PER COMMENTS
16	REVISED PER COMMENTS
17	REVISED PER COMMENTS
18	REVISED PER COMMENTS
19	REVISED PER COMMENTS
20	REVISED PER COMMENTS
21	REVISED PER COMMENTS
DATE: 08-11-10	
OVERALL STAFF	
ARCHITECT: HENRY & HENRY ASSOCIATES, INC.	
SCALE: AS SHOWN	