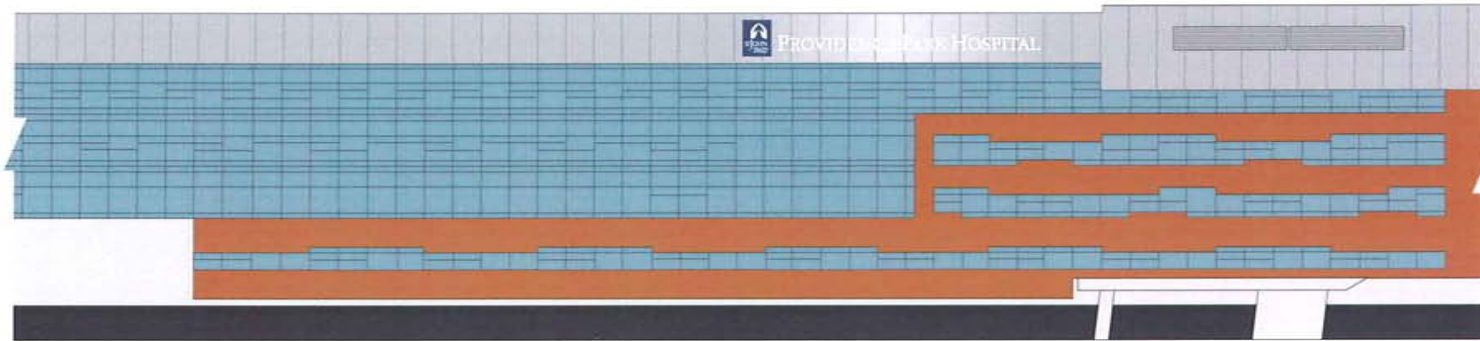
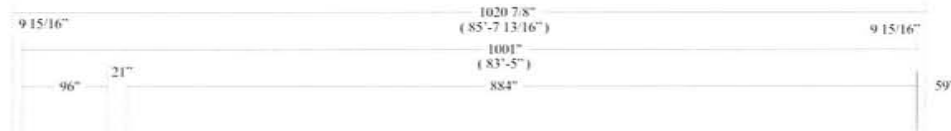


(A)



Scale: 1/32" = 1'-0"

PARTIAL ELEVATION

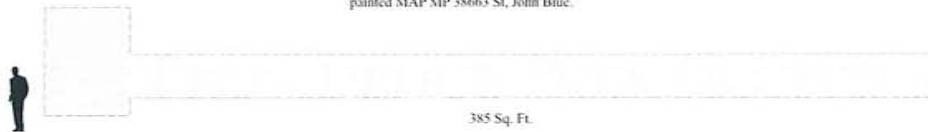


3M #3630-36 Blue translucent vinyl

PARTIAL ELEVATION

Scale: 3/32" = 1'-0"

**SPECIFICATION:**  
 Internally illuminated sign cabinet (logo) and channel letters.  
 Illuminated with White LED modules. Sidewalls and trimecaps  
 painted MAP MP 38663 St. John Blue.



385 Sq. Ft.

### SPECIFICATION

ONE (1) INTERNALLY ILLUMINATED LOGO AND LOGO LETTERS

**SIGN**graphix  
 39255 Country Club Drive, Suite B-35,  
 Farmington Hills, Michigan 48331-3490  
 Ph. 248-848-1700 Fax 248-848-1722  
 www.signgraphix.net

St John Providence Park Hospital

DRAWING: 8-31-09  
 14552 10-2-09  
 JOB: 17434

CLIENT SIGNATURE:  
 DATE

Novi, MI 48375

These designs, details and plans represented herein are the property of SignGraphix, Inc. specifically developed for your personal use in connection with the project being planned for you by SignGraphix, Inc. It is not to be shown to anyone outside your organization, nor is it to be used, reproduced, exhibited or copied in any fashion whatsoever all any part of this design (including registered trademarks) remain the property of SignGraphix, Inc.



**SIGN**graphix  
39255 Country Club Drive, Suite B-35,  
Farmington Hills, Michigan 48331-3490  
Ph. 248-848-1700 Fax 248-848-1722  
www.signgraphix.net

**St John Providence Park Hospital**

DRAWING: 8-31-09  
14553 10-2-09  
JOB:  
17434

CLIENT SIGNATURE  
  
DATE:

Novi, MI 48375

These designs, details and plans represented herein are the property of SignGraphix, Inc.; specifically developed for your personal use in connection with the project being planned for you by SignGraphix, Inc. It is not to be shown to anyone outside your organization, nor is it to be used, reproduced, exhibited or copied in any fashion whatsoever all any part of this design (excepting registered trademarks) remain the property of SignGraphix, Inc.





**SIGN**graphix

39255 Country Club Drive, Suite B-35,  
Farmington Hills, Michigan 48331-3490  
Ph. 248-848-1700 Fax 248-848-1722  
www.signgraphix.net

**St John Providence Park Hospital**

DRAWING: 8-31-09  
**14553.4** 10-2-09

JOB:  
17434

CLIENT SIGNATURE:

DATE:

**Novi, MI 48375**

These designs, details and plans represented herein are the property of SignGraphix, Inc., specifically developed for your personal use in connection with the project being placed for you by SignGraphix, Inc. It is not to be shown in any way outside your organization, nor is it to be used, reproduced, exhibited or copied in any fashion whatsoever all any part of this design (excepting registered trademarks) remain the property of SignGraphix, Inc.





**SIGN**graphix  
39255 Country Club Drive, Suite B-35,  
Farmington Hills, Michigan 48331-3490  
Ph. 248-848-1700 Fax 248-848-1722  
www.signgraphix.net

**St John Providence Park Hospital**

DRAWING: 8-31-09  
14553.3 10-2-09  
JOB:  
17434

CLIENT SIGNATURE:

DATE:

**Novi, MI 48375**

These designs, details and plans represented herein are the property of SignGraphix, Inc., specifically developed for your personal use in connection with the project being planned for you by SignGraphix, Inc. It is not to be shown to anyone outside your organization, nor is it to be used, reproduced, exhibited or copied in any fashion whatsoever all any part of this design (excepting registered trademarks) remain the property of SignGraphix, Inc.





**SIGN**graphix

39255 Country Club Drive, Suite B-35,  
Farmington Hills, Michigan 48331-3490  
Ph. 248-848-1700 Fax 248-848-1722  
www.signgraphix.net

**St John Providence Park Hospital**

DRAWING: 8-31-09  
14553.5 10-2-09

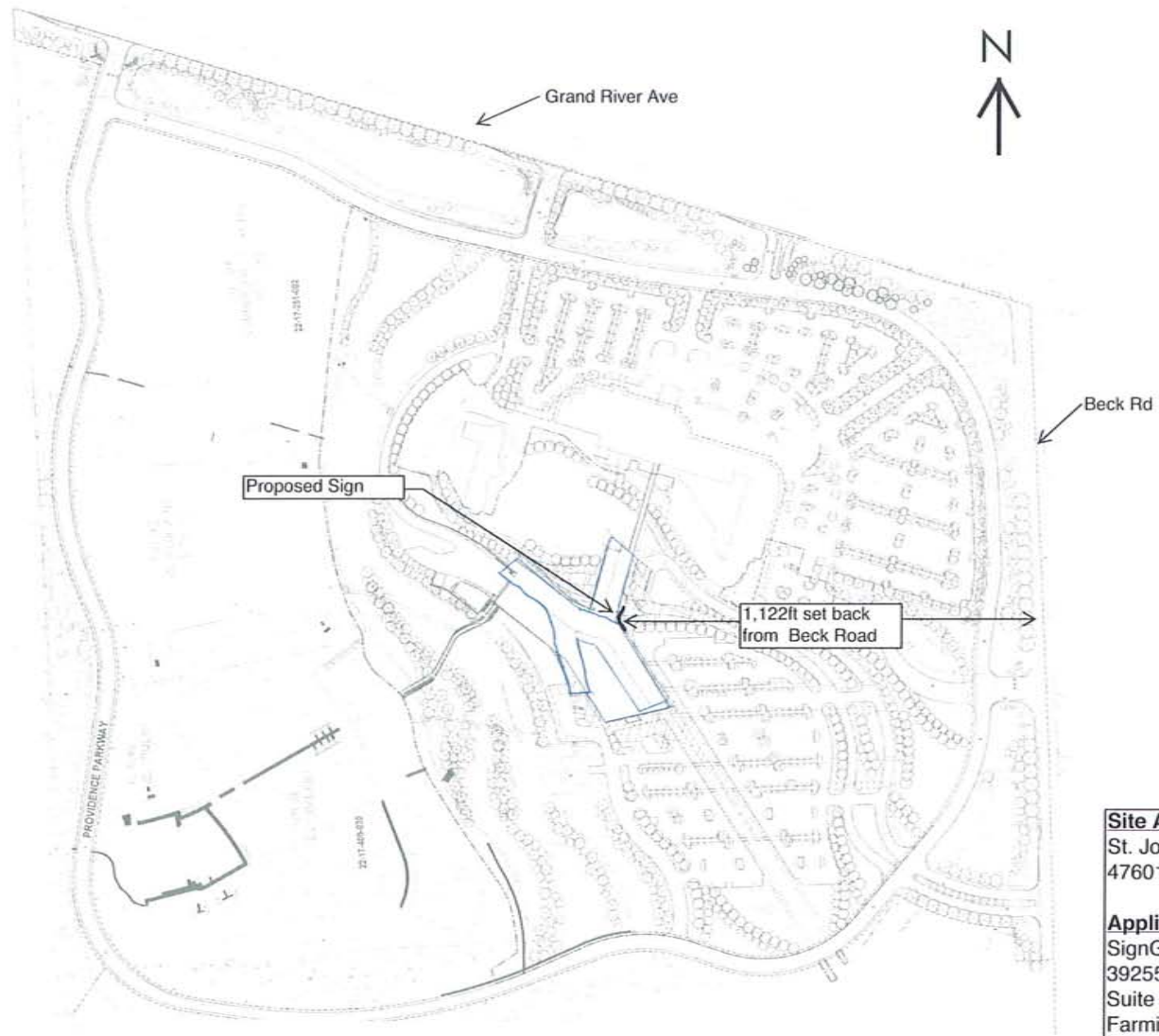
JOB:  
17434

CLIENT SIGNATURE

DATE

**Novi, MI 48375**

These designs, details and plans represented herein are the property of SignGraphix, Inc. specifically developed for your personal use in connection with the project being placed for you by SignGraphix, Inc. It is not to be shown to anyone outside your organization, nor is it to be used, reproduced, exhibited or copied in any fashion whatsoever all any part of this design (excepting registered trademarks) remain the property of SignGraphix, Inc.



**Site Address:**  
St. John Providence Hospital  
47601 Grand River Ave.

**Applicant:**  
SignGraphix, Inc.  
39255 Country Club Drive  
Suite B-35  
Farmington Hills, MI 48331

(B)



EAST VIEW

**SIGN**graphix

39255 Country Club Drive, Suite 9-35,  
Farmington Hills, Michigan 48331-3490  
Ph. 248-848-1700 Fax 248-848-1722  
www.signgraphix.net

St. John Providence Hospital

DRAWING: 10-9-09  
14586.1

JOB:  
17529

CLIENT SIGNATURE:

DATE:

48601 Grand River Novi, MI

These designs, details and plans represented herein are the property of SignGraphix, Inc. specifically developed for your personal use in connection with the project being planned for you by SignGraphix, Inc. It is not to be shown to anyone outside your organization, nor is it to be used, reproduced, exhibited or copied in any fashion whatsoever all any part of this design (excepting registered trademarks) remain the property of SignGraphix, Inc.





SOUTH VIEW

**SIGN**graphix  
 39255 Country Club Drive, Suite B-35,  
 Farmington Hills, Michigan 48331-3490  
 Ph: 248-848-1700 Fax 248-848-1722  
 www.signgraphix.net

St. John Providence Hospital

DRAWING: 10-9-09  
 14586.2

JOB:  
 17529

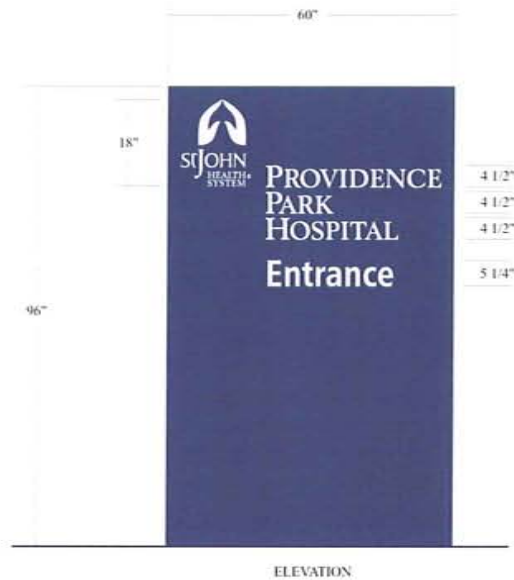
CLIENT SIGNATURE:

DATE:

48601 Grand River Novi, MI

These designs, details and plans represented herein are the property of SignGraphix, Inc., specifically developed for your personal use in connection with the project being planned for you by SignGraphix, Inc. It is not to be shown to anyone outside your organization, nor is it to be used, reproduced, exhibited or copied in any fashion whatsoever all any part of this design (excepting registered trademarks) remain the property of SignGraphix, Inc.





**CABINET:**

SignComp, Series 7 Single Body (#1602),  
SignComp, Series 7, Bleed Retainers (#1632),  
.100" aluminum faces,  
painted MAP MP38663 St. John Blue.

**COPY & GRAPHICS:**

Routed-out pushed thru flush logo and text,  
backed with White translucent acrylic panels,  
Berling Bold and Frutiger Bold typeface.

**ELECTRICAL (Voltage to be determined):**

Internal illumination with horizontal fluorescent lamps,  
disconnect switch to mounted on bottom of cabinet.  
Electrical hook up to be located in center / bottom of sign cabinet.

ONE (1) INTERNALLY ILLUMINATED DOUBLE-SIDED GROUND SIGN

Scale: 1/2" = 1'-0"

**SIGN**graphix

39255 Country Club Drive, Suite B-35,  
Farmington Hills, Michigan 48331-3490  
Ph. 248-848-1700 Fax 248-848-1722  
www.signgraphix.net

St. John Providence Hospital

DRAWING: 10-9-09  
14586

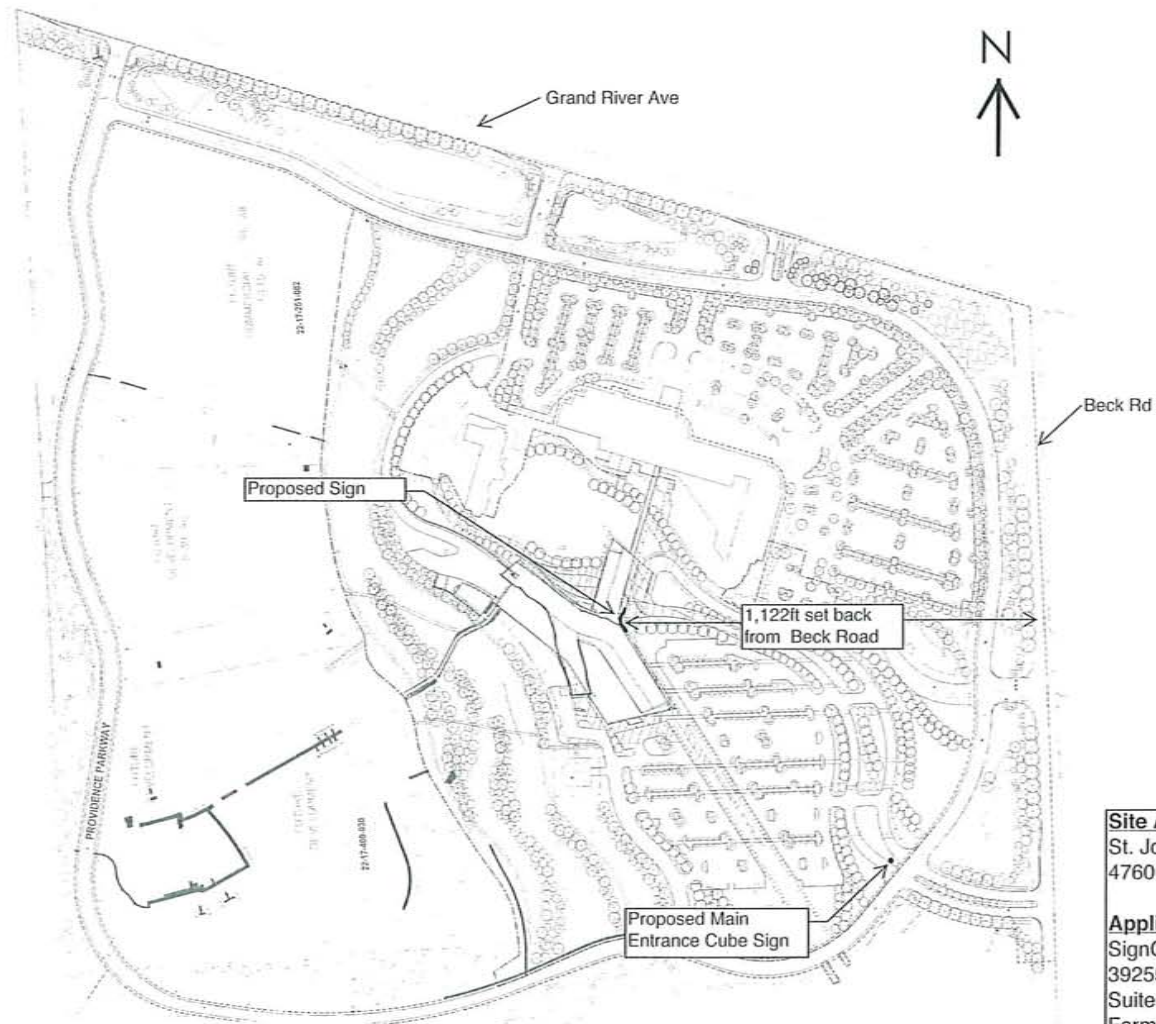
JOB:  
17529

CLIENT SIGNATURE:

DATE:

48601 Grand River Novi, MI

These designs, details and plans represented herein are the property of SignGraphix, Inc., specifically developed for your personal use in connection with the project being planned for you by SignGraphix, Inc. It is not to be shown to anyone outside your organization, nor is it to be used, reproduced, exhibited or copied in any fashion whatsoever all any part of this design (excepting registered trademarks) remain the property of SignGraphix, Inc.



**Site Address:**  
St. John Providence Hospital  
47601 Grand River Ave.

**Applicant:**  
SignGraphix, Inc.  
39255 Country Club Drive  
Suite B-35  
Farmington Hills, MI 48331