

Scale: 3/32" = 1'-0"

PARTIAL ELEVATION

SPECIFICATION:
 Internally illuminated sign cabinet (logo) and channel letters.
 Illuminated with White LED modules. Sidewalls and trimcaps
 painted MAP MP 38663 St. John Blue.



385 Sq. Ft.

SPECIFICATION

ONE (1) INTERNALLY ILLUMINATED LOGO AND LOGO LETTERS

SIGNgraphix
 39255 Country Club Drive, Suite B-35,
 Farmington Hills, Michigan 48331-3490
 Ph. 248-848-1700 Fax 248-848-1722
 www.signgraphix.net

St John Providence Park Hospital
 DRAWING: 12-1-08
 14081 12-3-08
 JOB: 16784
 DATE:

CLIENT SIGNATURE:

Novi, MI 48375

These designs, details and plans represented herein are the property of SignGraphix, Inc., specifically developed for your personal use in connection with the project being planned for you by SignGraphix, Inc. It is not to be shown to anyone outside your organization, nor is it to be used, reproduced, exhibited or copied in any fashion whatsoever all any part of this design (excepting registered trademarks) remain the property of SignGraphix, Inc.



ONE (1) INTERNALLY ILLUMINATED LOGO AND LOGO LETTERS

SIGNgraphix
39255 Country Club Drive, Suite B-35,
Farmington Hills, Michigan 48331-3490
Ph. 248-848-1700 Fax 248-848-1722
www.signgraphix.net

St. John Providence Park Hospital
DRAWING: 12-1-08
14081.1 12-3-08
JOB: 16784
DATE:

Novi, MI 48375

These designs, details and plans represented herein are the property of SignGraphix, Inc.; specifically developed for your personal use in connection with the project being planned for you by SignGraphix, Inc. It is not to be shown to anyone outside your organization, nor is it to be used, reproduced, exhibited or copied in any fashion whatsoever all any part of this design (excepting registered trademarks) remain the property of SignGraphix, Inc.



ONE (1) INTERNALLY ILLUMINATED LOGO AND LOGO LETTERS

SIGNgraphix
 39255 Country Club Drive, Suite B-35,
 Farmington Hills, Michigan 48331-3490
 Ph. 248-848-1700 Fax 248-848-1722
 www.signgraphix.net

St John Providence Park Hospital
 DRAWING: 12-1-08
 14081.2 12-3-08
 JOB:
 16784

CLIENT SIGNATURE:

DATE:

Novi, MI 48375

These designs, details and plans represented herein are the property of SignGraphix, Inc., specifically developed for your personal use in connection with the project being planned for you by SignGraphix, Inc. It is not to be shown to anyone outside your organization, nor is it to be used, reproduced, exhibited or copied in any fashion whatsoever all any part of this design (excepting registered trademarks) remain the property of SignGraphix, Inc.



ONE (1) INTERNALLY ILLUMINATED LOGO AND LOGO LETTERS

SIGNgraphix
39255 Country Club Drive, Suite B-35,
Farmington Hills, Michigan 48331-3490
Ph. 248-848-1700 Fax 248-848-1722
www.signgraphix.net

St John Providence Park Hospital

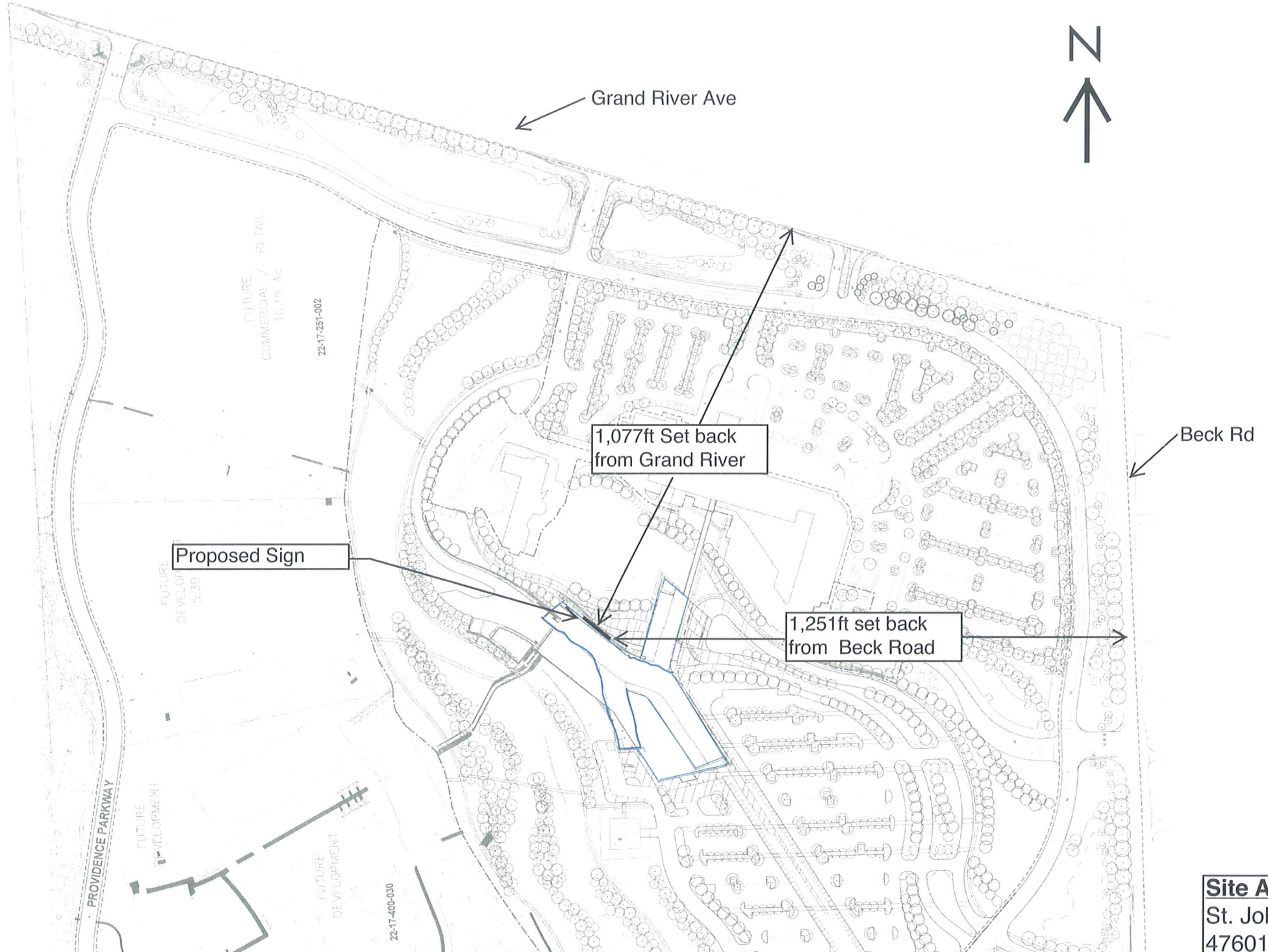
DRAWING: 12-1-08
14081.3 12-3-08
JOB:
16784

CLIENT SIGNATURE:

DATE:

Novi, MI 48375

These designs, details and plans represented herein are the property of SignGraphix, Inc.; specifically developed for your personal use in connection with the project being planned for you by SignGraphix, Inc. It is not to be shown to anyone outside your organization, nor is it to be used, reproduced, exhibited or copied in any fashion whatsoever all any part of this design (excepting registered trademarks) remain the property of SignGraphix, Inc.



Site Address
St. John P
47601 G