

*Overall Area = 114.7 sq. ft. (Novi Code) (91.75" vert. x 180" horiz. = 114.7 sq. ft.)

Area of Sign minus the yellow shaded areas = 63 sq. ft.

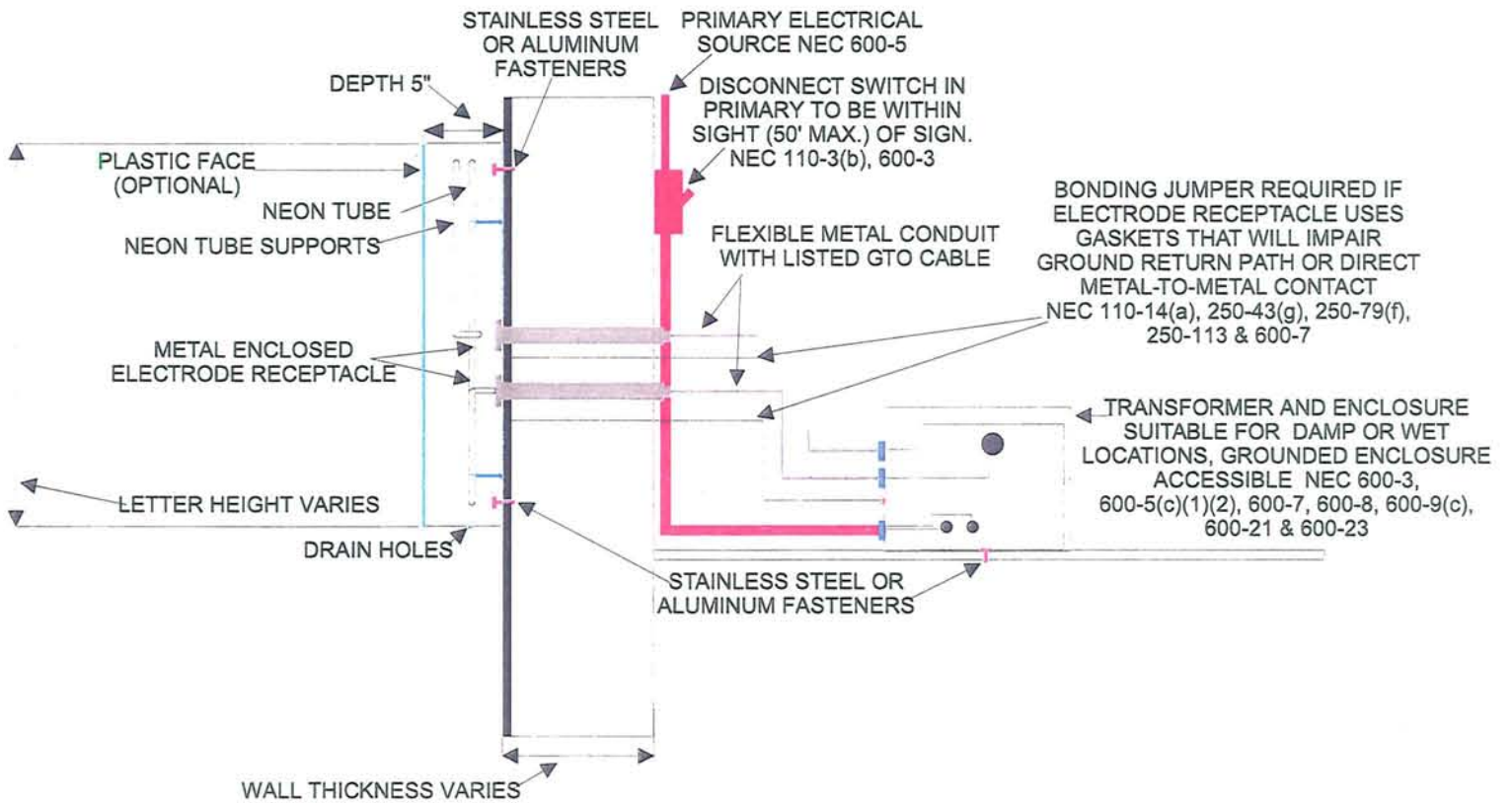
Fusion Health and Fitness Club
 44125 W. 12 Mile Rd., Ste E-124
 Novi, MI 48377



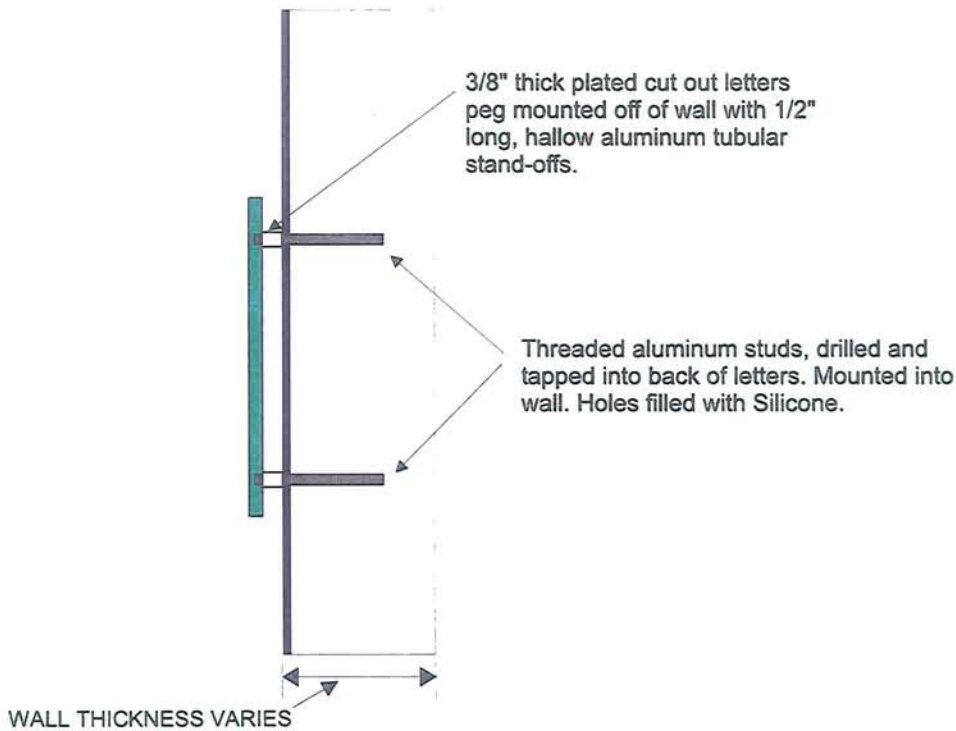
SCALE: 1" (Inch) = 1' (Foot)

44125 W. 12 Mile
 Suite E-124

Channel Letter Mounting



Routed Aluminum Letter Mounting

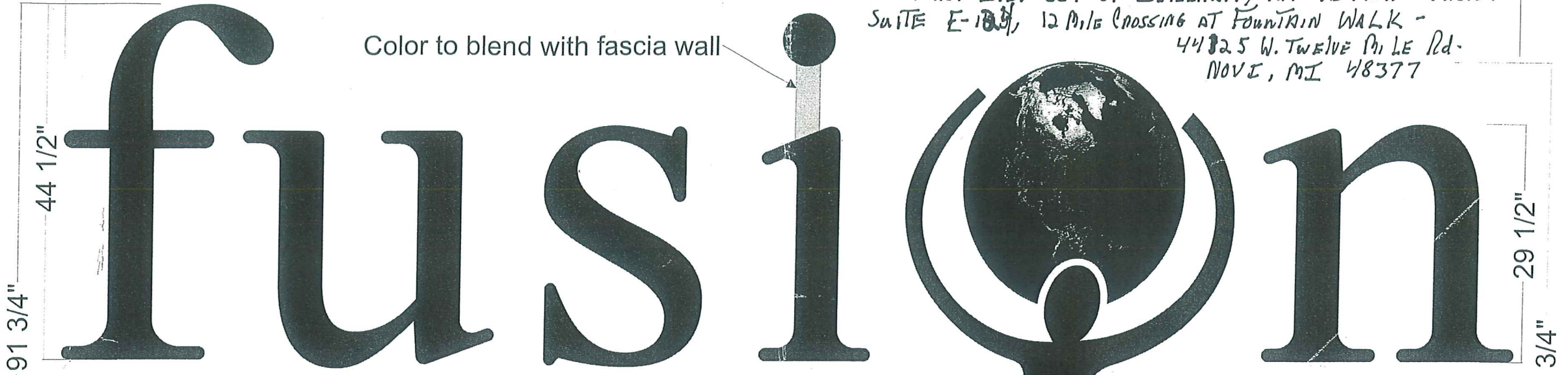


FUSION SIGN SPECS

15'-0"

EAST ELEV SET OF INTERNALLY LIT LETTERS - FUSION
SUITE E-100, 12 MILE CROSSING AT FOUNTAIN WALK -
44825 W. TWELVE MILE RD.
NOVI, MI 48377

Color to blend with fascia wall



health and fitness clubs

- Non-lit, 3/8" thick, routed aluminum plate letters pin mounted w/ 1/2" spacers to wall with 3/16" non-corrosive studs
- finished green s.gloss enamel, same as return on lit letter sides above

- All sign components installed according to all local building codes
- All sign components & letters will be U.L. Listed
- one dedicated 120v/20amp circuit is to be provided by others to each sign location

- Internally illuminated channel letters, figure, & globe logo
- letters finished s.gloss enamel, hunter green
- letter faces constructed of 3/16" translucent acrylic: letters & figure, #2030 green; globe white w/digitally printed globe graphic applied. All elements trimmed w/1" green Jewelite trim
- power provided by remote, 120v transformers
- letters & figure lit with double line green neon tubing; white globe lit with Designer 71 white neon
- neon transformers housed in weathertight boxes on the backside, exterior parapet wall

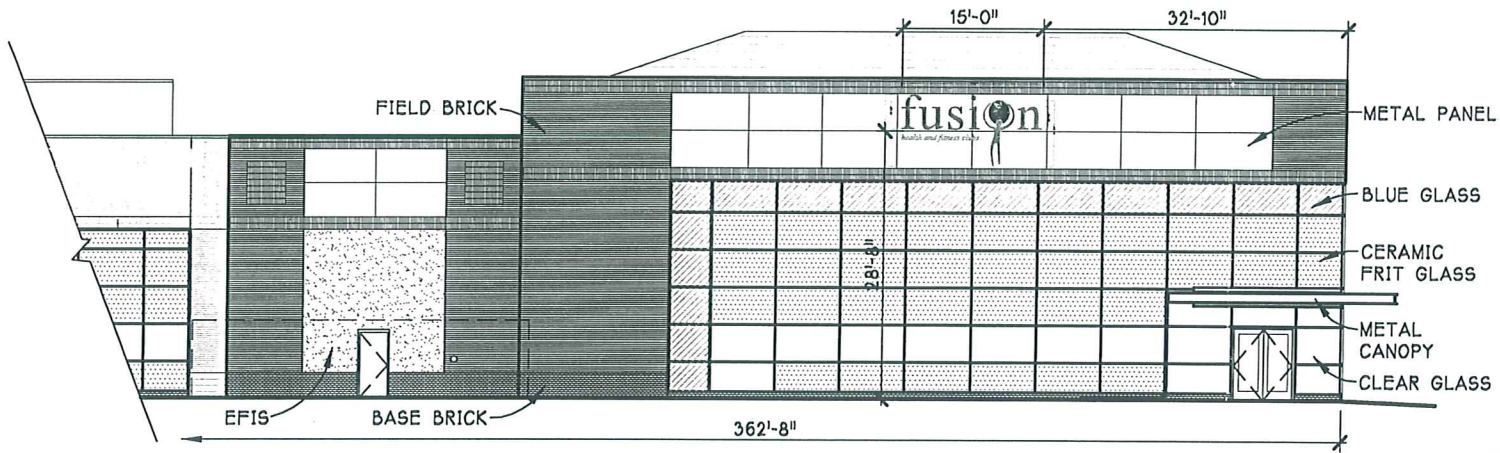


LOCATION:

SCALE: 1" (Inch) = 1' (Foot)

These designs, details and plans represented herein are the property of LaVanway Sign Co. : Specifically developed for your personal use in connection with the project being planned for you by LaVanway Sign Co. It is not to be shown to anyone outside of your organization, nor are they to be used, reproduced, exhibited or copied in any fashion whatsoever. All or any part of this design (excepting registered trademarks) remains the property of LaVanway Sign Co.

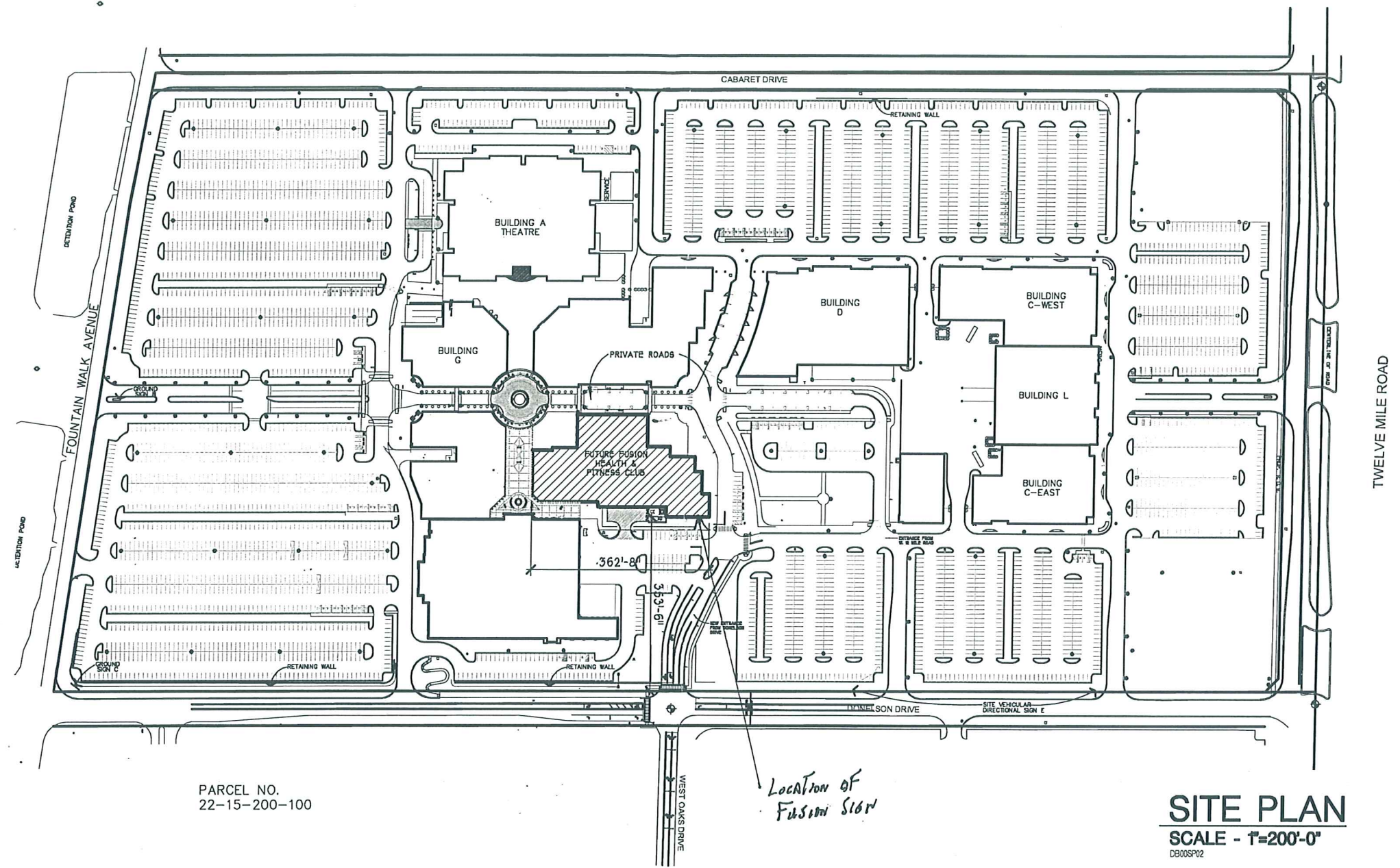
PROJECT:	DESIGNER:
DATE:	FILE NAME:
HOURS:	REVISIONS:



**PARTIAL EAST
ELEVATION (DONELSON DR)**

SCALE - 1/16"=1'-0"

DB00AED1



PARCEL NO.
22-15-200-100

SITE PLAN
SCALE - 1"=200'-0"
DB00SP02