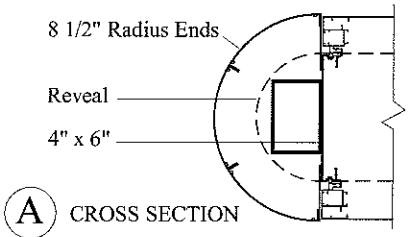


ELEVATION

SIDE VIEW



CROSS SECTION

**CABINET:**  
 \*SignComp, Wide Body (#2005)  
 \*SignComp, 2 1/4" Retainer (#2045)  
 flat aluminum bleed faces,  
 routed out graphics with pushed thru  
 acrylic (flush) with applied translucent  
 vinyl as indicated, sub-surface applied  
 diffuser film,  
 \*SignComp, 8 1/2" Radius 3-part (#1673),  
 fabricated aluminum reveal and skirt,  
 all painted \*\*MAP as indicated.

**INBOARD SUPPORTS:**  
 Two (2) 4" x 6" rectangular aluminum supports,  
 to be direct buried and set in concrete 42" below  
 grade.

**ELECTRICAL:**

- Internal illumination as req'd (120V).
- Disconnect switch to be located on-reveal
- Electrical junction box located on skirt.
- Sign to be U.L. approved.

30 Sq. Ft.

- A** \*\*MAP to match \*\*\*3M Scotchal #3630-49 Burgundy
- B** \*\*\*3M Scotchal #3630-131 Gold Metallic, translucent
- C** \*\*\*3M Scotchal #3630-10 White, translucent
- D** \*\*\*3M Scotchal #7725-131 Satin Gold, opaque

ONE (1) DOUBLE-SIDED INTERNALLY ILLUMINATED GROUND SIGN  
 Scale: 1/2" = 1'-0"

\*SignComp - Extruded Aluminum Sign System    \*\*MAP - Matthews Acrylic Polyurethane Paint System    \*\*\*3M - Commercial Grade Vinyl

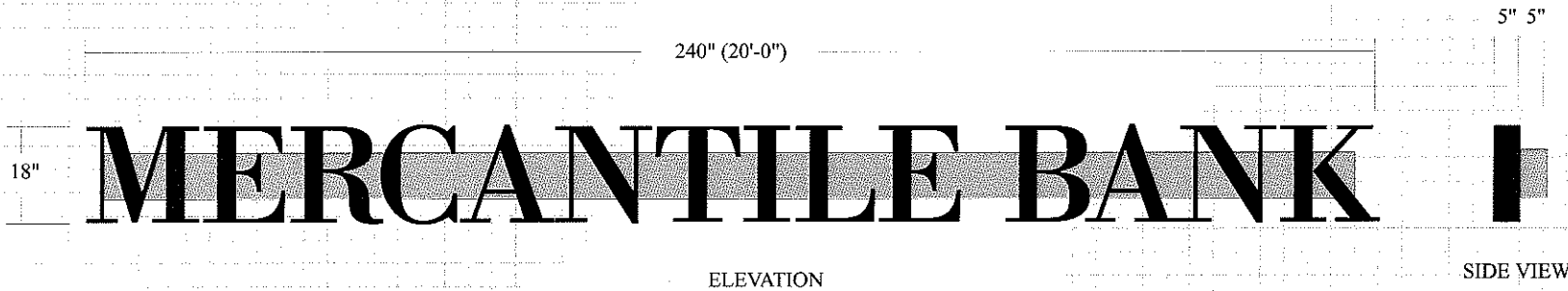
**SIGN**graphix  
 39255 Country Club Drive, Suite B-35,  
 Farmington Hills, Michigan 48331-3490  
 Ph. 248-848-1700 Fax 248-848-1722  
 www.signgraphix.net

Mercantile Bank of Michigan 28350 Cabot Drive Novi, MI

DRAWING: 9-25-07  
**13149** 10-5-07  
 JOB: 15561

CLIENT SIGNATURE: \_\_\_\_\_  
 DATE: \_\_\_\_\_

These designs, details and plans represented herein are the property of SignGraphix, Inc; specifically developed for your personal use in connection with the project being planned for you by SignGraphix, Inc. It is not to be shown to anyone outside your organization, nor is it to be used, reproduced, exhibited or copied in any fashion whatsoever all any part of this design (excepting registered trademarks) remain the property of SignGraphix, Inc.



**CONSTRUCTION:**  
 Internally illuminated aluminum channel letters with Black / White acrylic faces. Illuminated with White LED modules. Low voltage transformers mounted in fabricated aluminum raceway. Raceway to painted to match building.

MERCANTILE BANK

30 Sq. Ft.

ONE (1) SET OF INTERNALLY ILLUMINATED WALL LETTERS ON A RACEWAY  
 Scale: 1/2" = 1'-0"

**SIGN**graphix

39255 Country Club Drive, Suite B-35,  
 Farmington Hills, Michigan 48331-3490  
 Ph. 248-848-1700 Fax 248-848-1722  
 www.signgraphix.net

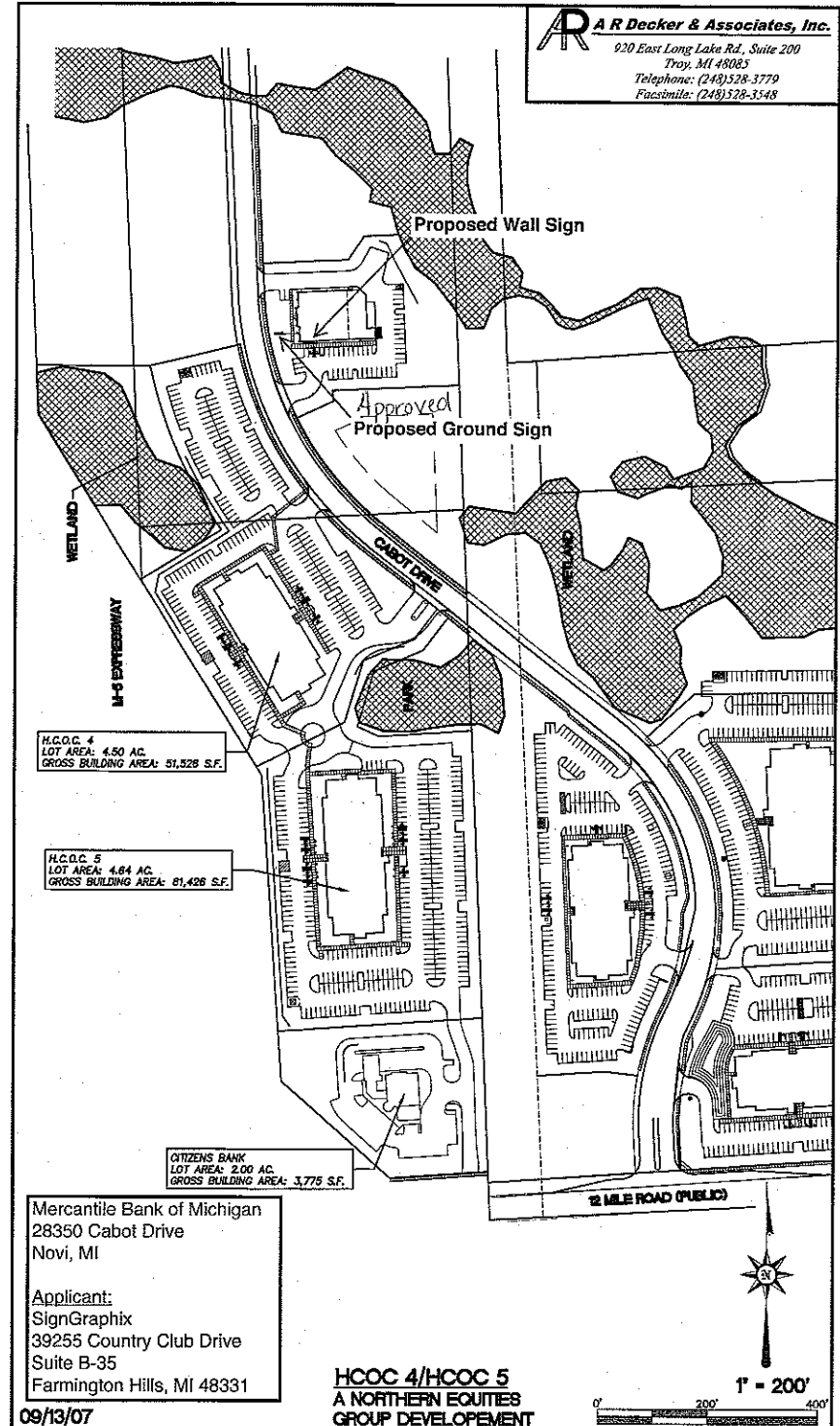
**Mercantile Bank of Michigan**

DRAWING: 10-8-07  
**13182**  
 JOB:  
 15561

CLIENT SIGNATURE: \_\_\_\_\_  
 DATE: \_\_\_\_\_

28350 Cabot Drive Novi, MI

These designs, details and plans represented herein are the property of SignGraphix, Inc; specifically developed for your personal use in connection with the project being planned for you by SignGraphix, Inc. It is not to be shown to anyone outside your organization, nor is it to be used, reproduced, exhibited or copied in any fashion whatsoever all any part of this design (excepting registered trademarks) remain the property of SignGraphix, Inc.



H.C.O.C. 4  
 LOT AREA: 4.50 AC.  
 GROSS BUILDING AREA: 51,528 S.F.

H.C.O.C. 5  
 LOT AREA: 4.84 AC.  
 GROSS BUILDING AREA: 61,426 S.F.

CITIZENS BANK  
 LOT AREA: 2.00 AC.  
 GROSS BUILDING AREA: 3,775 S.F.

Mercantile Bank of Michigan  
 28350 Cabot Drive  
 Novi, MI

Applicant:  
 SignGraphix  
 39255 Country Club Drive  
 Suite B-35  
 Farmington Hills, MI 48331

09/13/07

**HCOC 4/HCOC 5**  
**A NORTHERN EQUITIES**  
**GROUP DEVELOPMENT**

