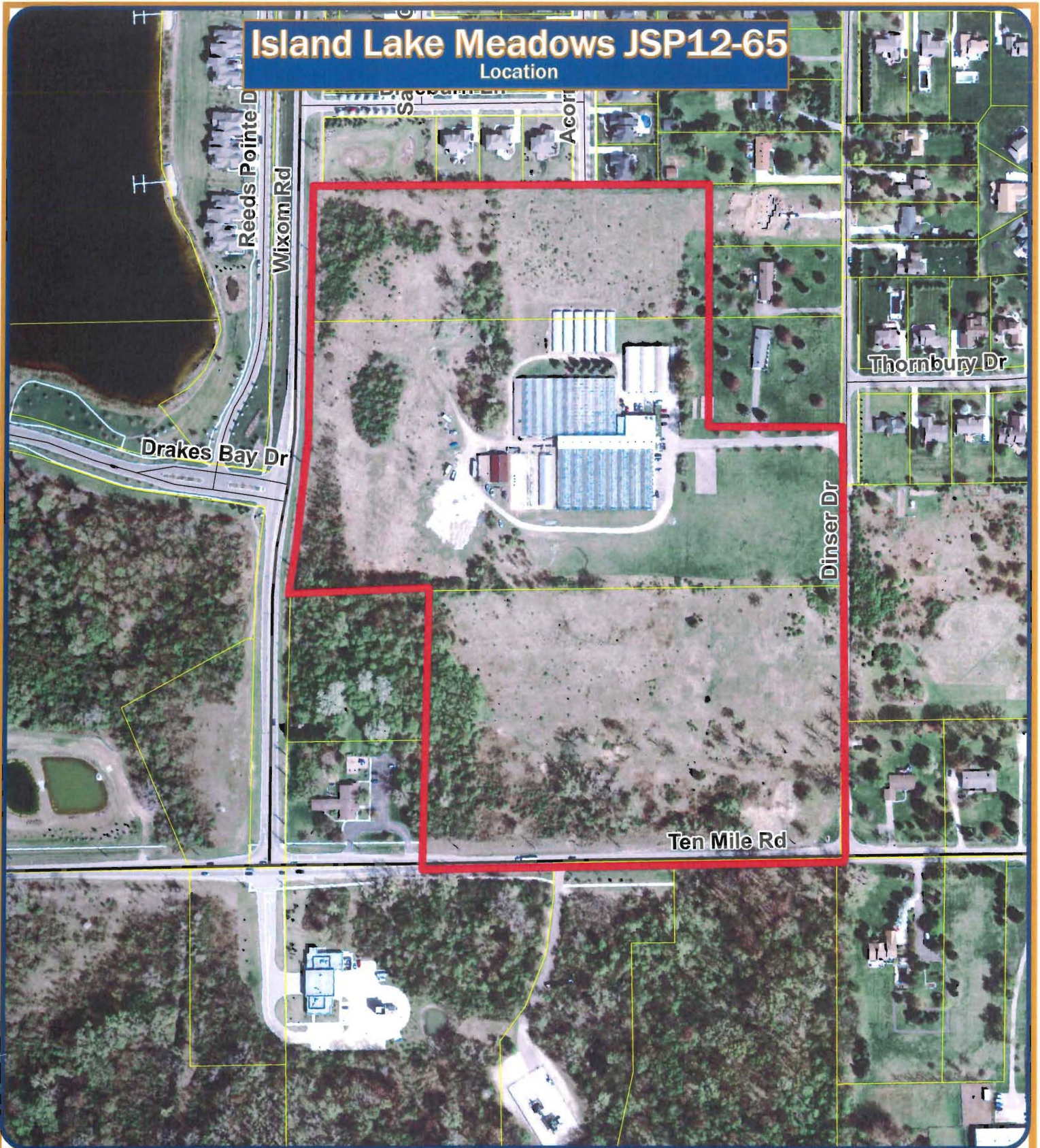


MAPS
Location
Zoning
Future Land Use
Natural Features

Island Lake Meadows JSP12-65

Location



Map Author: Kristen Kapelanski
Date: 12-05-12
Project: Island Lake Meadows JSP12-65
Version #: 1.0

Map Legend

 Subject Property



City of Novi
Planning Division
Community Development
45175 W Ten Mile Rd
Novi, MI 48375
cityofnovi.org

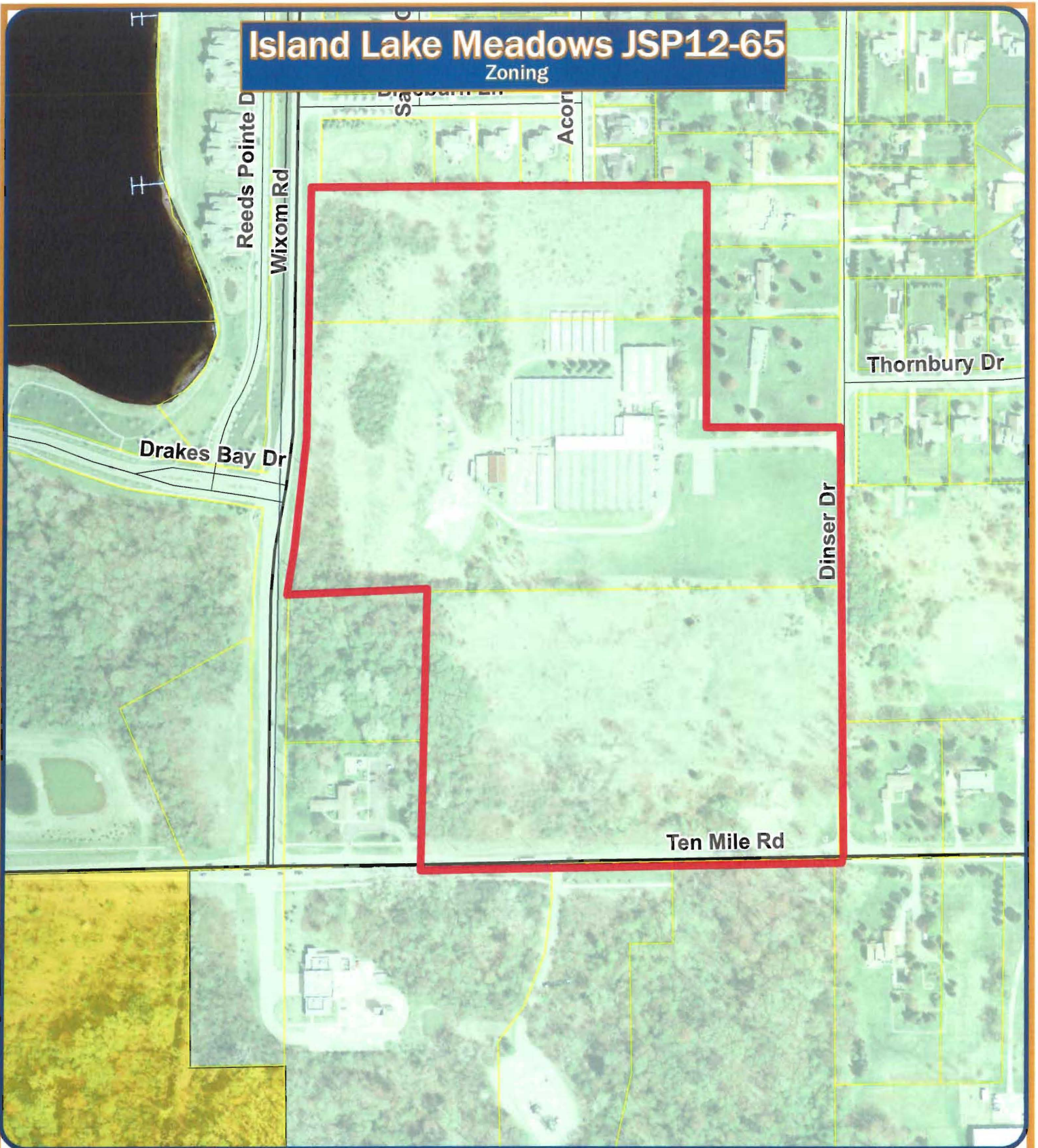
MAP INTERPRETATION NOTICE
Map information depicted is not intended to replace or substitute for any official or primary source. This map was intended to meet National Map Accuracy Standards and use the most recent accurate sources available to the people of the City of Novi. Boundary measurements and area calculations are approximate and should not be construed as survey measurements performed by a licensed Michigan Surveyor as defined in Michigan Public Act 132 of 1970 as amended. Please contact the City GIS Manager to confirm source and accuracy information related to this map.



1 inch = 314 feet




Island Lake Meadows JSP12-65

Zoning



Map Author: Kristen Kapelanski
 Date: 12-05-12
 Project: Island Lake Meadows JSP12-65
 Version #: 1.0

Map Legend

-  Subject Property
-  R-A: Residential Acreage
-  R-1: One-Family Residential District

MAP INTERPRETATION NOTICE

Map information depicted is not intended to replace or substitute for any official or primary source. This map was intended to meet National Map Accuracy Standards and use the most recent accurate sources available to the people of the City of Novi. Boundary measurements and area calculations are approximate and should not be construed as survey measurements performed by a licensed Michigan Surveyor as defined by Michigan Public Act 132 of 1970 as amended. Please contact the City GIS Manager to confirm source and accuracy information related to this map.



City of Novi

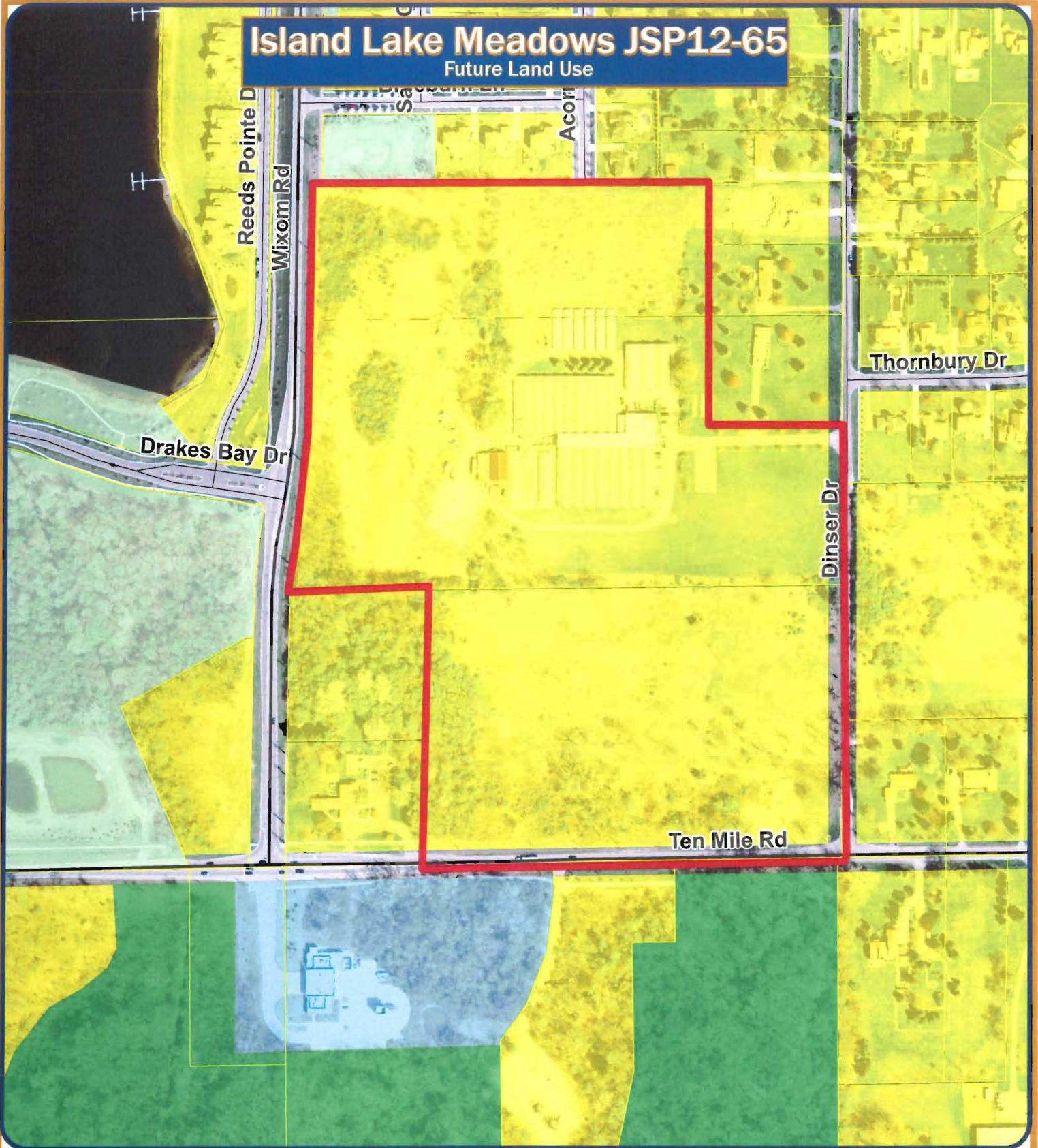
Planning Division
 Community Development
 45175 W Ten Mile Rd
 Novi, MI 48375
cityofnovi.org



1 inch = 314 feet

Island Lake Meadows JSP12-65

Future Land Use



Map Author: Kristen Kapelanski
 Date: 12-05-12
 Project: Island Lake Meadows JSP12-65
 Version #: 1.0

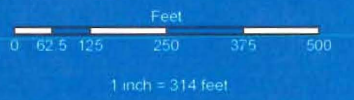
Map Legend

-  Subject Property
-  Single Family
-  Public
-  Public Park
-  Private Park



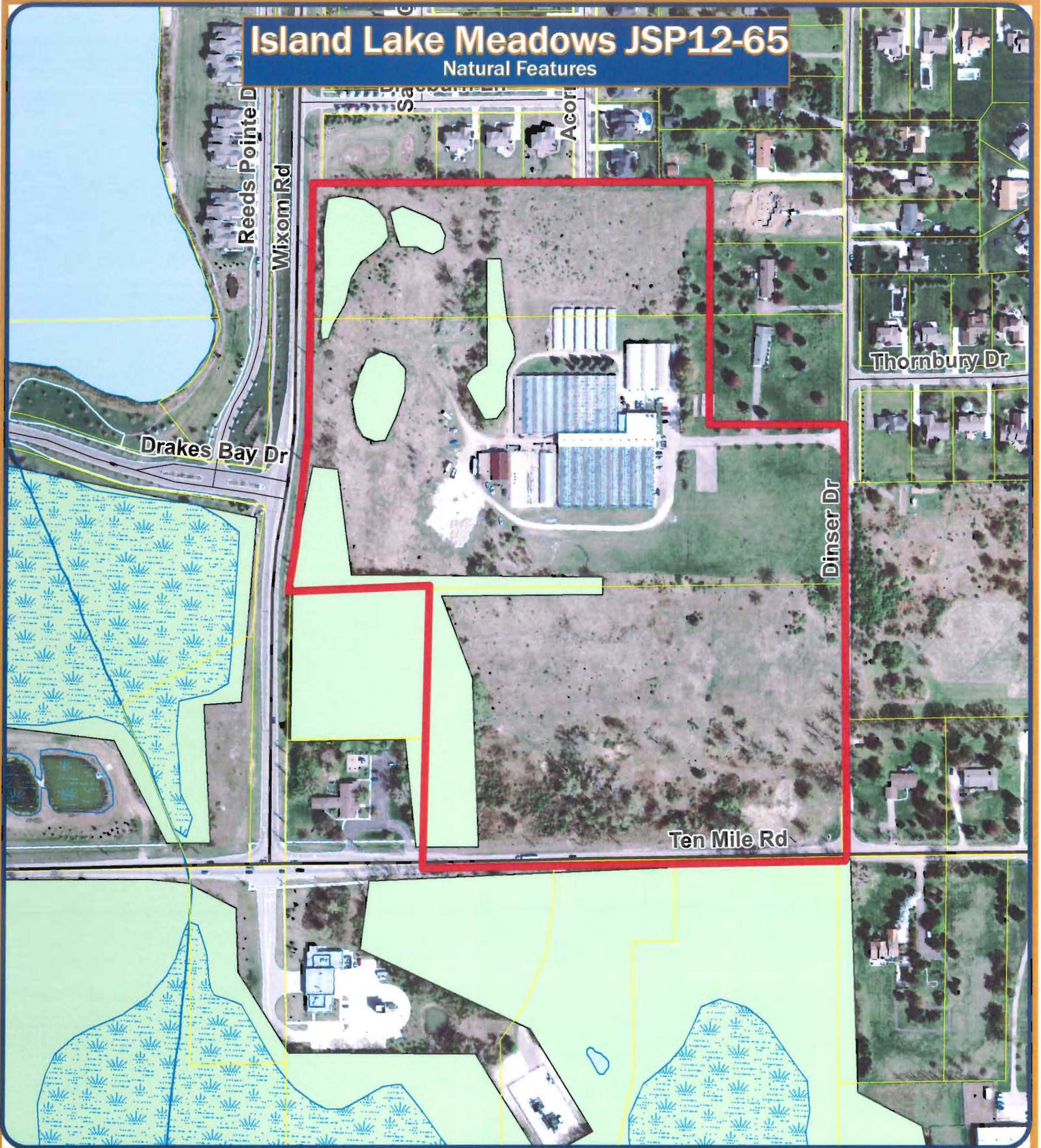
City of Novi
 Planning Division
 Community Development
 45175 W Ten Mile Rd
 Novi, MI 48375
cityofnovi.org

MAP INTERPRETATION NOTICE
 Map information depicted is not intended to replace or substitute for any official or primary source. This map was intended to meet National Map Accuracy Standards and use the most recent accurate sources available to the people of the City of Novi. Boundary measurements and area calculations are approximate and should not be construed as survey measurements performed by a licensed Michigan Surveyor as defined in Michigan Public Act 132 of 1970 as amended. Please contact the City GIS Manager to confirm source and accuracy information related to this map.



Island Lake Meadows JSP12-65

Natural Features



Map Author: Kristen Kapelanski
 Date: 12-05-12
 Project: Island Lake Meadows JSP12-65
 Version #: 1.0

Map Legend	
	Subject Property
	Wetlands
	Woodlands

MAP INTERPRETATION NOTICE
 Map information depicted is not intended to replace or substitute for any official or primary source. This map was intended to meet National Map Accuracy Standards and use the most recent accurate sources available to the people of the City of Novi.
 Boundary measurements and area calculations are approximate and should not be construed as survey measurements performed by a licensed Michigan Surveyor as defined in Michigan Public Act 132 of 1976 as amended. Please contact the City GIS Manager to confirm source and accuracy information related to this map.



City of Novi

Planning Division
 Community Development
 45175 W Ten Mile Rd
 Novi, MI 48375
cityofnovi.org



1 inch = 314 feet