

MEMORANDUM



TO: MEMBERS OF THE PLANNING COMMISSION

FROM: ^{Barb} BARBARA MCBETH, AICP, DEPUTY DIRECTOR OF
COMMUNITY DEVELOPMENT

SUBJECT: I-96 AREA TRANSPORTATION STUDY

DATE: SEPTEMBER 5, 2008

City Engineer Rob Hayes would like to make a brief presentation to the Planning Commission regarding the proposed I-96 Area Transportation Study. Please see attached copy of the power point presentation.

This study was funded as a part of the 2008-2009 budget, and a "Venture Team" of administrative staff members has been assigned to coordinate this study with public and private stakeholders. Details of this study were recently presented to the City Council and comments were taken regarding the progress and scope of the study.

The Planning Commission will be invited to provide comments or ask questions about the proposed transportation study, following the brief presentation by Rob.

c Rob Hayes, City Engineer
Steve Rumble, Community Development Director

I-96 Area Transportation Study

September 10, 2008



Rob Hayes, City Engineer

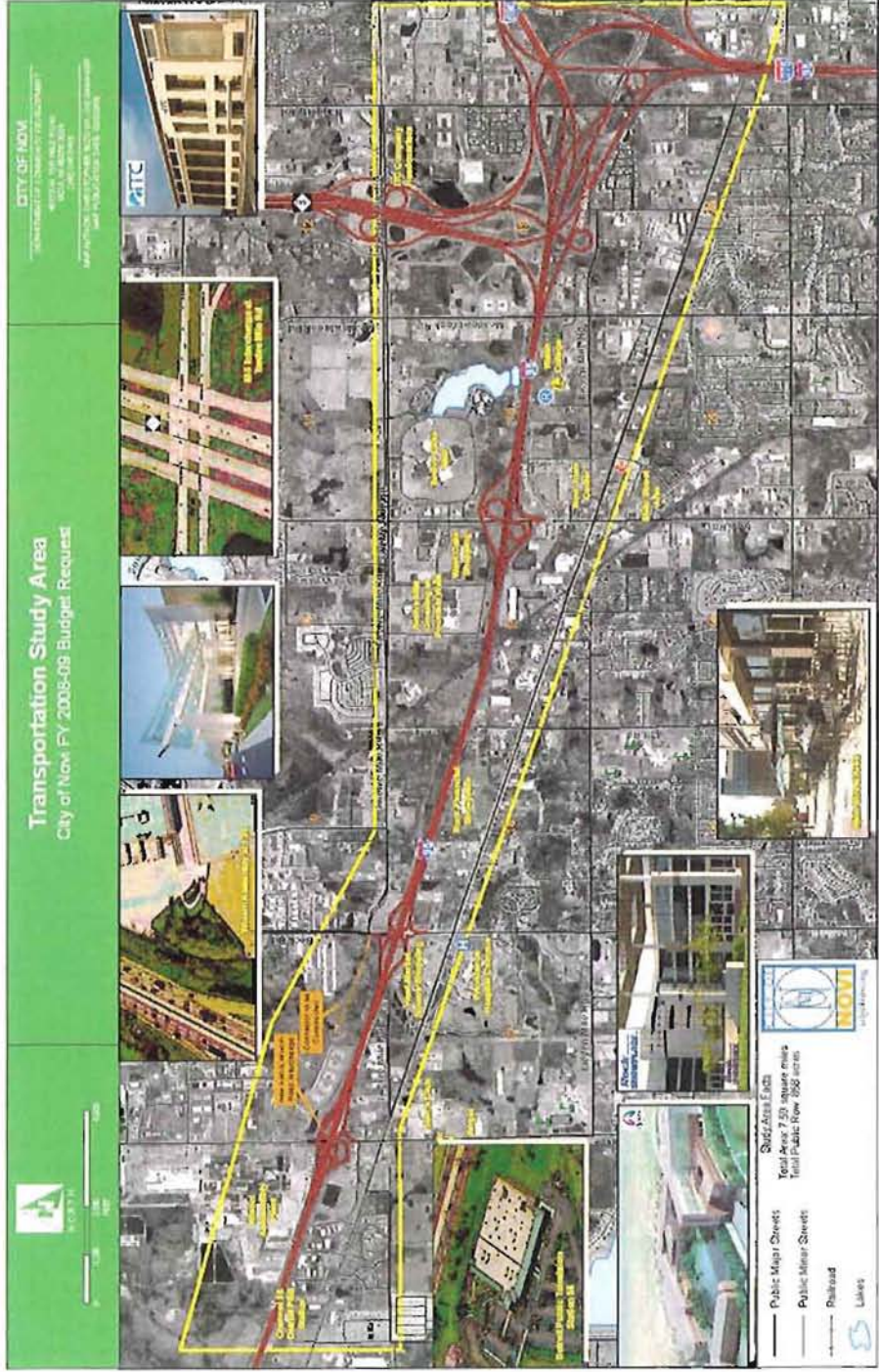


Background

- **Novi's Competitive Advantage**
 - **Geographic location**
 - **Proximity to major transportation networks**
 - **Shorter supply chains for businesses**
 - **Convenience/accessibility for residents.**
- **Enhancing Transportation Networks Critical to Maintaining the Region's and Novi's Edge**
- **Transportation Study**
 - **Service Improvement Request in FY08/09 Budget (\$100,000)**
 - **I-96 Study Area**
 - **Grand River Avenue Corridor**
 - **Twelve Mile Road Corridor**
 - **I-275/M-5 Corridor**
 - **Novi/Wixom West City Limits (Napier Road extended)**



I-96 Area Transportation Study Area



CITY OF NOV
 "COMMUNITY CONNECTION"
 3000 W. WALTON
 48066-1500
 248.243.2200
 WWW.CITYOFNOVI.ORG

Transportation Study Area
 City of Novi, FY 2008-09 Budget Request

ATTC

Facts

- **High Average Daily Traffic Counts in Study Area:**
 - I-96: 134,000 VPD
 - I-275: 180,000 VPD
 - I-696: 153,000 VPD
 - M-5: 71,000 VPD
- **Large Trip Generators in Study Area:**
 - Novi Road/I-96 Retail Area
 - Providence Hospital
 - Rock Financial Showplace
 - Future Use of Former Ford Plant in Wixom
- **I-96 at Novi Road: One of the highest “lane closures per mile” ratings in Metro Detroit**
- **7 of Novi’s Top 10 High Crash Intersections in Study Area**



Transportation Study Goal

- Develop a prioritized list of projects that, when implemented, will:
 - Improve traffic safety
 - Reduce traffic congestion
 - Foster economic development
- Goal's Relevance
 - Directly aligned with Council's major goals of:
 - Improving public safety
 - Encouraging economic development
 - "Traffic congestion" No. 1 problem area cited in Novi's 2006 Citizen Survey
 - Identified as an MDOT Priority



Transportation Study - Execution

- **Mobilize Stakeholders**

- Private
- Public

- **Assemble Venture Team**

- Steve Rumble – Community Development
- Ara Topouzian – Economic Development
- Terry Whitfield – Police Department
- Tia Gronlund-Fox – Human Resources
- Brian Coburn - Engineering



Transportation Study - Execution

- Private Stakeholder Participation



Private Stakeholders	Expected Level of Participation (As of 9/10/08)	
	Financial Contribution	Technical Assistance
Taubman Group	√	√
Providence Hospital	√	
TBON, LLC (RFS)	√	
ITC		√

Transportation Study - Execution

- Public Stakeholder Participation:



Public Stakeholders	Expected Level of Participation (As of 9/10/08)	
	Financial Contribution	Technical Assistance
City of Novi	√	√
MDOT	√	√
SEMCOG		√
RCOC		√
City of Wixom	√	√
Traffic Improvement Association		√

Transportation Study - Execution

- **Consultant Selection**
 - Transportation engineering & planning expertise
 - Local presence
 - Unbiased approach to the problem
 - Qualifications-based selection (QBS)

- **Study Phases**
 - Project Initiation
 - Data Collection
 - Data Evaluation
 - Forecasting
 - Alternative Development
 - Alternative Evaluation
 - Report Preparation



Transportation Study - Execution

- **Stakeholder Involvement**
 - Project Progress Meetings
 - Project Work Sessions

- **Public Involvement**
 - Listening Session
 - Public Information Meetings
 - City of Novi City Council Presentations
 - City of Wixom City Council Presentations



Transportation Study - Execution

- **Project Schedule**



- **Major Milestones**

- December 2008: Data Collection & Evaluation Complete
- February 2009: Forecasting Complete
- May 2009: Alternative Development Complete
- June 2009: Final Report Complete/Adoption of Findings

Transportation Study - Execution

- **Preferred Transportation Alternative**
 - Series of Projects to be Completed in the Study Area
 - Short-term: 1-5 years
 - Mid-term: 6-15 years
 - Long-term: 16-25 years
 - Cost estimates and funding strategies
 - Examples of Potential Transportation Improvement Projects
 - Short- & Mid-Term: (Low to medium Cost)
 - Signage improvements
 - Intelligent transportation system (ITS) implementation
 - Access management plans
 - Travel demand management plans
 - Intersection improvements
 - Turn lanes
 - Acceleration/deceleration lanes
 - Long-Term: (High Cost)
 - Interchange improvements
 - Roadway and intersection widening
 - Grade separations



I-96 Area Transportation Study

- **Keys to Success:**

- *Public and Private Stakeholder Involvement and Buy-In*
- *Public Communication*
- *Focus on Overall Goal*
- *Stay within Scope*

- **Questions & Comments**

