



**Agenda Item I  
July 12, 2010**

**SUBJECT:** Approval to award contract for provision of plant and hardscape materials, and construction and implementation services for the proposed Fuerst Park Gardens to Great Lakes Landscaping, Inc., the low bid, in the amount of \$42,229.

**SUBMITTING DEPARTMENT:** Department of Parks, Recreation and Cultural Services *[Signature]*

**CITY MANAGER APPROVAL** *[Signature]*

EXPENDITURE REQUIRED	\$42,229
AMOUNT BUDGETED	\$45,000
LINE ITEM NUMBER	Allocated by Novi Parks Foundation Donation

**BACKGROUND INFORMATION:** Previously the City Council approved a total budget of \$45,000 to be provided by the Novi Parks Foundation toward the construction of formal gardens at the newly improved Fuerst Park. The design, plans and specifications were developed by the City Landscape Architect with the cooperation and input of the Departments of Parks, Recreation and Cultural Services, Community Development and Public Services.

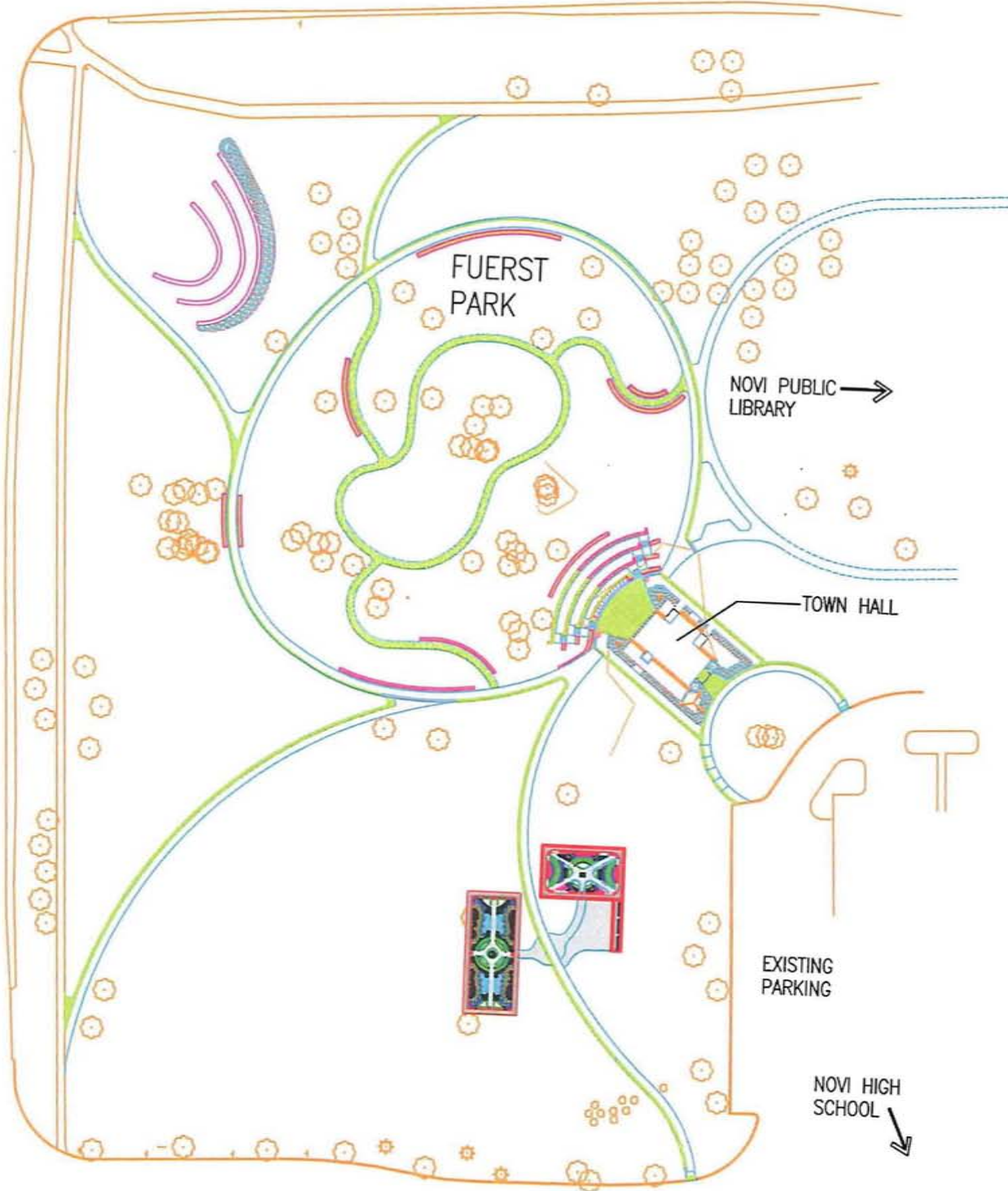
The design features two adjacent formal garden areas arranged on either side of an existing park walkway. The sizes and orientation of the gardens themselves mimic the size and locations of two of the barns that were part of the original Fuerst Farmstead, in recognition of the rural heritage of the property and the legacy of the early settlers to Novi. The gardens will feature perennial plants that will return every year and provide seasonal color throughout the warmer months. Focal points are provided in the center of the gardens to allow for the installation and rotation of sculptures or artwork. A small plaza area and decorative benches are included for group meetings and community events. Irrigation will be included and the newly installed plantings will have a two year warranty period. The Novi Beautification Commission is working in cooperation with Novi High School students for long term maintenance of the gardens.

A total of three bids were received (bid summary attached). Based on unit pricing of estimated quantities, Great Lakes Landscaping, Inc. is the low bidder. Staff has verified that the firm can provide a quality installation, on schedule and within the budget. Development of the gardens will begin in mid-July and will be completed in August, 2010.

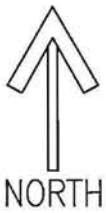
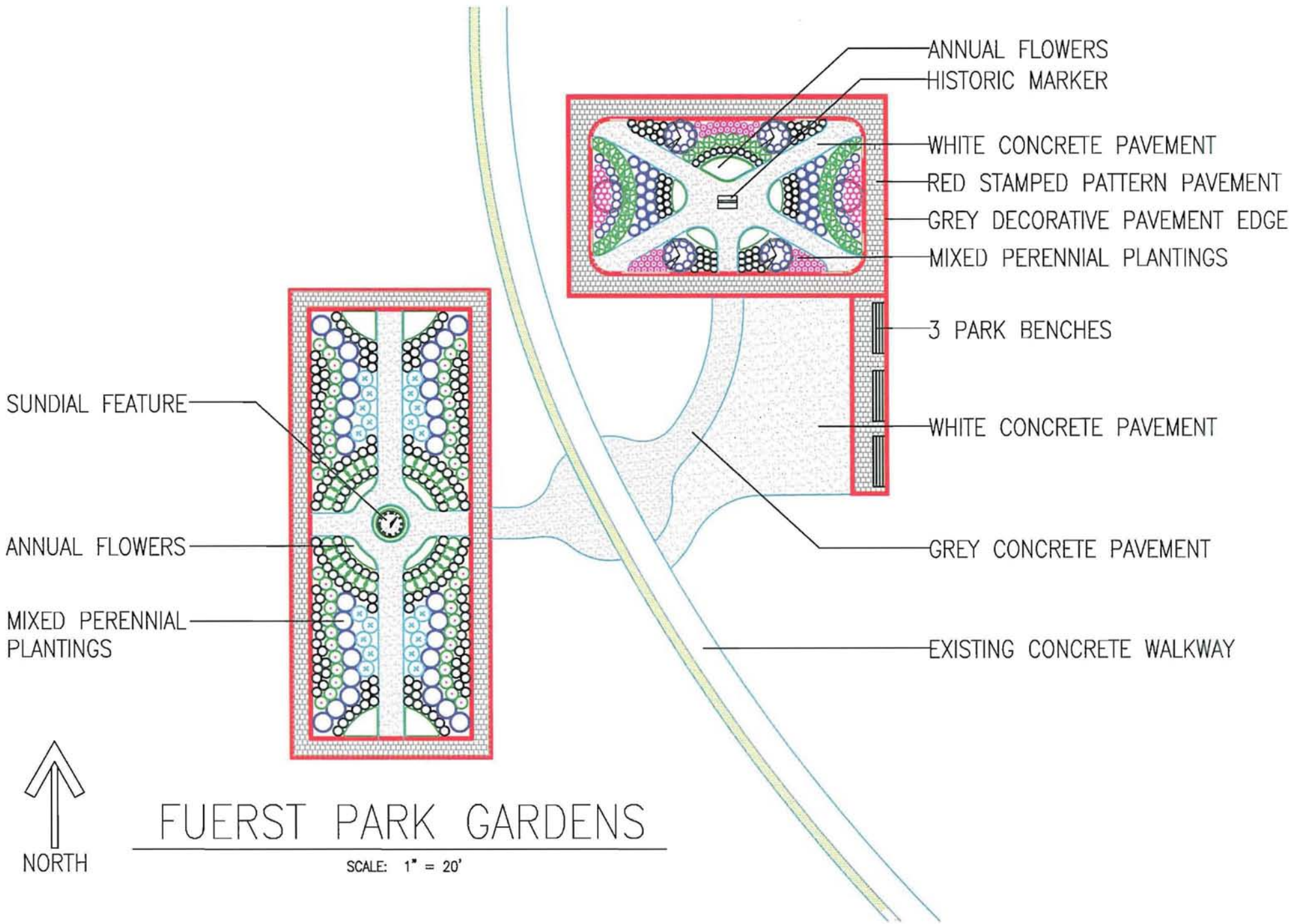
**RECOMMENDED ACTION:** Approval to award contract for provision of plant and hardscape materials, and construction and implementation services for the proposed Fuerst Park Gardens to Great Lakes Landscaping, Inc., the low bid, in the amount of \$42,229.

	1	2	Y	N
Mayor Landry				
Mayor Pro Tem Gatt				
Council Member Crawford				
Council Member Fischer				

	1	2	Y	N
Council Member Margolis				
Council Member Mutch				
Council Member Staudt				







NORTH

# FUERST PARK GARDENS

SCALE: 1" = 20'

CITY OF NOVI  
FUERST PARK GARDENS  
JUNE 22, 2010

Bid 1 - Part A - Materials & Planting Acceptable Species	Size	Est. Qty	Great Lakes Unit Cost	Great Lakes Total	Chas F. Irish Unit Cost	Chas F. Irish Total	Bob's Landscaping Unit Cost	Bob's Land. Total
Malus 'Red Baron' (Red Baron Crabapple)	2" cal.	2	133.00	266.00	150.00	300.00	208.00	416.00
Malus 'Cinzam' (Cinzam Crabapple)	2" cal.	4	146.00	584.00	250.00	1,000.00	315.00	1,260.00
Buxus microphylla 'Compacta' (Boxwood)	#3 cont.	22	24.00	528.00	30.00	660.00	47.00	1,034.00
Picea abies 'Nidiformis' (Birds Nest Spruce)	#3 cont.	8	27.00	216.00	28.00	224.00	42.75	342.00
Achillea x 'Coronation Gold' (Coronation Gold Yarrow)	#2 cont.	22	10.00	220.00	9.00	198.00	15.00	330.00
Sedum x 'Autumn Joy' (Autumn Joy Sedum)	#2 cont.	24	8.50	204.00	9.00	216.00	20.00	480.00
Achillea millefolium 'Red Beauty' (Red Beauty Yarrow)	#2 cont.	10	10.00	100.00	10.00	100.00	15.00	150.00
Achillea millefolium 'Paprika' (Paprika Yarrow)	#2 cont.	10	10.00	100.00	10.00	100.00	15.00	150.00
Calamagrostis x acutifolia 'Karl Foerster' (Foester Feather Reed Grass)	#3 cont.	16	10.00	160.00	10.00	160.00	39.00	624.00
Coreopsis verticillata 'Moonbeam' (Moonbeam Coreopsis)	#2 cont.	20	13.00	260.00	10.00	200.00	22.50	450.00
Coreopsis verticillata 'Rosea' (Rose Coreopsis)	#2 cont.	30	9.00	270.00	10.00	300.00	13.10	393.00
Echinacea purpurea 'Magnus' (Purple Coneflower)	#2 cont.	22	13.00	286.00	10.00	220.00	20.00	440.00
Hosta sieboldiana 'Francis Williams' (Francis Williams Hosta)	#2 cont.	36	16.00	576.00	15.00	540.00	20.00	720.00
Heuchera micrantha 'Purple Palace' (Purple Palace Coral Bells)	#2 cont.	46	13.00	598.00	10.00	460.00	20.00	920.00
Hosta 'Stella D'Oro' (Stella D'Oro Daylily)	#2 cont.	19	13.00	247.00	10.00	190.00	22.50	427.50
Leucanthemum superbum 'Alaska' (Alaska Shasta Daisy)	#2 cont.	28	8.00	224.00	11.00	308.00	13.10	366.80
Lavandula angustifolia 'Hidcote' (Hidcote Lavendar)	#2 cont.	11	13.00	143.00	11.00	121.00	17.50	192.50
Liatris spicata (Spike Gayfeather)	#2 cont.	44	12.00	528.00	11.00	484.00	22.50	990.00
Miscanthus sin. purpurascens 'Autumn Red' (Autumn Red Maiden Grass)	#3 cont.	16	26.00	416.00	12.00	192.00	39.40	630.40
Nepeta faassenii (Catmint)	#2 cont.	32	13.00	416.00	12.00	384.00	13.10	419.20
Panicum alopecuroides 'Hamlin' (Dwarf Fountain Grass)	#2 cont.	40	14.00	560.00	12.00	480.00	26.25	1,050.00
Ceratostigma plumbaginoides (Plumbago)	#2 cont.	32	8.00	256.00	11.00	352.00	16.25	520.00
Rudbeckia fulgida speciosa 'Goldstrum' (Goldstrum Black Eyed Susan)	#2 cont.	24	13.00	312.00	11.00	264.00	20.00	480.00
Coreopsis grandifolia 'Sunray' (Sunray Coreopsis)	#2 cont.	10	8.00	80.00	11.00	110.00	13.10	131.00
Stokesia laevis 'Blue Danube' (Stokes Aster)	#2 cont.	22	8.00	176.00	10.00	220.00	15.00	330.00
Scabiosa caucasica 'Butterfly Blue' (Butterfly Blue Pincushion)	#2 cont.	28	20.00	560.00	10.00	280.00	15.00	420.00
<b>TOTAL PART A</b>		<b>578</b>		<b>8,286.00</b>		<b>8,063.00</b>		<b>13,666.40</b>

Bid 1 Part B - Construction Material (including Labor)	Unit	Est. Qty.						
Concrete pavement (Uncolored)	SY	250	38.25	9,562.50	45.75	11,437.50	61.92	15,480.00
Concrete pavement (Sandblasted Gray)	SY	56	8.00	448.00	66.44	3,720.64	207.30	11,608.80
Concrete pavement (Red, stamped)	SY	190	72.00	13,680.00	84.26	16,009.40	142.60	27,094.00
Hardwood Mulch	SY	350	3.75	1,312.50	0.60	210.00	4.35	1,522.50
6" deep Metal Landscape Edging	LF	120	7.00	840.00	3.65	438.00	4.50	540.00
Irrigation ( Design/Build Lump Sum)	EA	1	4,300.00	4,300.00	3,933.00	3,933.00	7,500.00	7,500.00
Temporary Boundary Fencing	LF	400	2.50	1,000.00	4.55	1,820.00	3.75	1,500.00
Mobilization (Max. 10%)	EA	1	400.00	400.00	1,000.00	1,000.00	4,000.00	4,000.00
<b>TOTAL PART B</b>				<b>31,543.00</b>		<b>38,568.54</b>		<b>69,245.30</b>

ALT #1 - AMENITIES	Unit	Est. Qty.						
Parc Vue Benches	EA	3	700.00	2,100.00	1,753.00	5,259.00	1,810.34	5,431.02
Boulder Relocation	EA	3	100.00	300.00	125.00	375.00	35.00	105.00
<b>TOTAL ALTERNATE #11</b>				<b>2,400.00</b>		<b>5,634.00</b>		<b>5,536.02</b>

TOTAL PART A + PART B + ALTERNATE #1

42,229.00

52,265.54

88,447.72



CITY OF NOVI  
2010 FUERST PARK GARDENS

OFFICIAL BID FORM

BID 1 PART A – PLANT MATERIALS & INSTALLATION

Acceptable species of Plant Material	Size	Estimated Qty.	Unit Cost	TOTAL
Malus 'Red Baron' (Red Baron Crabapple)	2" cal.	2	133-	266
Malus 'Cinzam' (Cinzam Crabapple)	2" cal.	4	146-	584
Buxus microphylla 'Compacta' (Boxwood)	#3 cont.	22	24	528
Picea abies 'Nidiformis' (Birds Nest Spruce)	#3 cont.	8	27	216
Achillea x 'Coronation Gold' (Coronation Gold Yarrow)	#2 cont.	22	10	220
Sedum x 'Autumn Joy' (Autumn Joy Sedum)	#2 cont.	24	850	204
Achillea millefolium 'Red Beauty' (Red Beauty Yarrow)	#2 cont.	10	10	100
Achillea millefolium 'Paprika' (Paprika Yarrow)	#2 cont.	10	10	100
Calamagrostis x acutifolia 'Karl Foerster' (Foester Feather Reed Grass)	#3 cont.	16	10	160
Coreopsis verticillata 'Moonbeam' (Moonbeam Coreopsis)	#2 cont.	20	13	260
Coreopsis verticillata 'Rosea' (Rose Coreopsis)	#2 cont.	30	9	270
Echinacea purpurea 'Magnus' (Purple Coneflower)	#2 cont.	22	13	286
Hosta sieboldiana 'Francis Williams' (Francis Williams Hosta)	#2 cont.	36	16	576
Heuchera micrantha 'Purple Palace' (Purple Palace Coral Bells)	#2 cont.	46	13	598
Hosta 'Stella D'Oro' (Stella D'Oro Daylily)	#2 cont.	19	13	247
Leucanthemum superbum 'Alaska' (Alaska Shasta Daisy)	#2 cont.	28	8	224
Lavandula angustifolia 'Hidcote' (Hidcote Lavendar)	#2 cont.	11	13	143
Liatris spicata (Spike Gayfeather)	#2 cont.	44	12	528
Miscanthus sin. purpurascens 'Autumn Red' (Autum Red Maiden Grass)	#3 cont.	16	26	416
Nepata faassenii (Catmint)	#2 cont.	32	13	416
Panicum alopecuroides 'Hamlin' (Dwarf Fountain Grass)	#2 cont.	40	14	560
Ceratostigma plumbaginoides (Plumbago)	#2 cont.	32	8	256
Rudbeckia fulgida speciosa 'Goldstrum' (Goldstrum Black Eyed Susan)	#2 cont.	24	13	312
Coreopsis grandifolia 'Sunray' (Sunray Coreopsis)	#2 cont.	10	8	80
Stokesia laevis 'Blue Danube' (Stokes Aster)	#2 cont.	22	8	176
Scabiosa caucasica 'Butterfly Blue' (Butterfly Blue Pincushion)	#2 cont.	28	20	560
<b>TOTAL</b>		<b>578</b>	<b>---</b>	<b>8286<sup>00</sup></b>



**CITY OF NOVI  
2010 FUERST PARK GARDENS**

**BID 1 PART B – CONSTRUCTION MATERIALS & LABOR**

Construction Material (including Labor)	Estimated Qty.	Unit Cost	TOTAL
Concrete pavement (Uncolored)	250 SY	38.25	9563
Concrete pavement (Sandblasted Gray)	56 SY	8	<del>4532</del> 448
Concrete pavement (Red, stamped)	190 SY	72	13,680
Hardwood Mulch	350 SY	3.75	1313
6" deep Metal Landscape Edging	120 LF	7	840
Irrigation ( Design/Build Lump Sum)	1	4300	4300
Temporary Boundary Fencing	400 LF	2.50	1,000
Mobilization (Max. 10%)	1	400	400
<b>TOTAL CONSTRUCTION MATERIALS &amp; LABOR</b>			<b>35127<sup>00</sup></b>

**TOTAL BID 1 PART A + PART B**

\$ ~~43,413~~ *math error - corrected total sum.*  
39,829

**Alternate #1 - Amenities**

Description	Qty.	Unit Cost	TOTAL
Parc Vue Benches (6', with back, armless)	3	700	2100
Boulder relocation and placement at gardens option (onsite relocation - 2 to 3 stones)	3	100	300

\$ 42,229 \*

**ESTIMATED PROJECT COMPLETION DATE**  
*we have received ADDENDUM #1* Oct 2010

This organization shall plant all proposed vegetation, install pavement and irrigation and accept all terms and conditions of these specifications.

Company Name GREAT LAKES LANDSCAPING  
 Representative Name PAULA GORNEY  
 Representative Signature Paula Gorney  
 Telephone 586-756-5347 Date 586-756-4190

**NOTE:** The above plant list is for the Contractor's information only, and no guarantee is expressed or implied that quantities therein are correct or that the list is complete.