



# CITY of NOVI CITY COUNCIL

[www.cityofnovi.org](http://www.cityofnovi.org)

**Agenda Item: 3**  
**October 22, 2007**

**SUBJECT:** Approval to award a contract for Architectural Design and Engineering Services for the addition and renovation of Fire Station # 2 to CDPA for a not-to-exceed price of \$71,537 (includes \$2800 for alternate #1 – asbestos assessment and a 10 percent contingency for related project expenses).

**SUBMITTING DEPARTMENT:** Fire

**CITY MANAGER APPROVAL:** *PWA for CJP*

<b>EXPENDITURE REQUIRED</b>	\$71,537
<b>AMOUNT BUDGETED</b>	\$1,304,834 (as originally budgeted including construction)
<b>LINE ITEM NUMBER</b>	101-337.00-976.000

**BACKGROUND INFORMATION:**

City Council authorized staff to proceed with the bid process to obtain an architectural firm for Fire Station # 2 addition and renovation. A Request for Proposals (RFP) was posted on Bidnet on September 26, 2007 with a mandatory pre-bid meeting at Fire Station #2 on October 4, 2007. At that time six of the seven pre-qualified Architectural firms attended the pre-bid meeting. The RFP was due October 16, 2007 and a total of four Architectural firms provided proposals. The results are shown below:

	CDPA	CHMP	REDSTONE	STRAUB
Rating # 1	370	150	320	160
Rating # 2	385	305	210	100
Rating # 3	345	325	200	130
Rating # 4	360	230	270	140
Rating # 5	385	210	280	125
Rating # 6	400	290	160	150
<b>TOTALS</b>	<b>2245</b>	<b>1510</b>	<b>1440</b>	<b>805</b>
<b>Bid</b>	<b>\$62,234</b>	<b>\$69,560</b>	<b>\$128,275</b>	<b>\$58,200</b>
<b>Alternate #1</b>	<b>\$2,800</b>	<b>\$2,500</b>		<b>\$4,800</b>

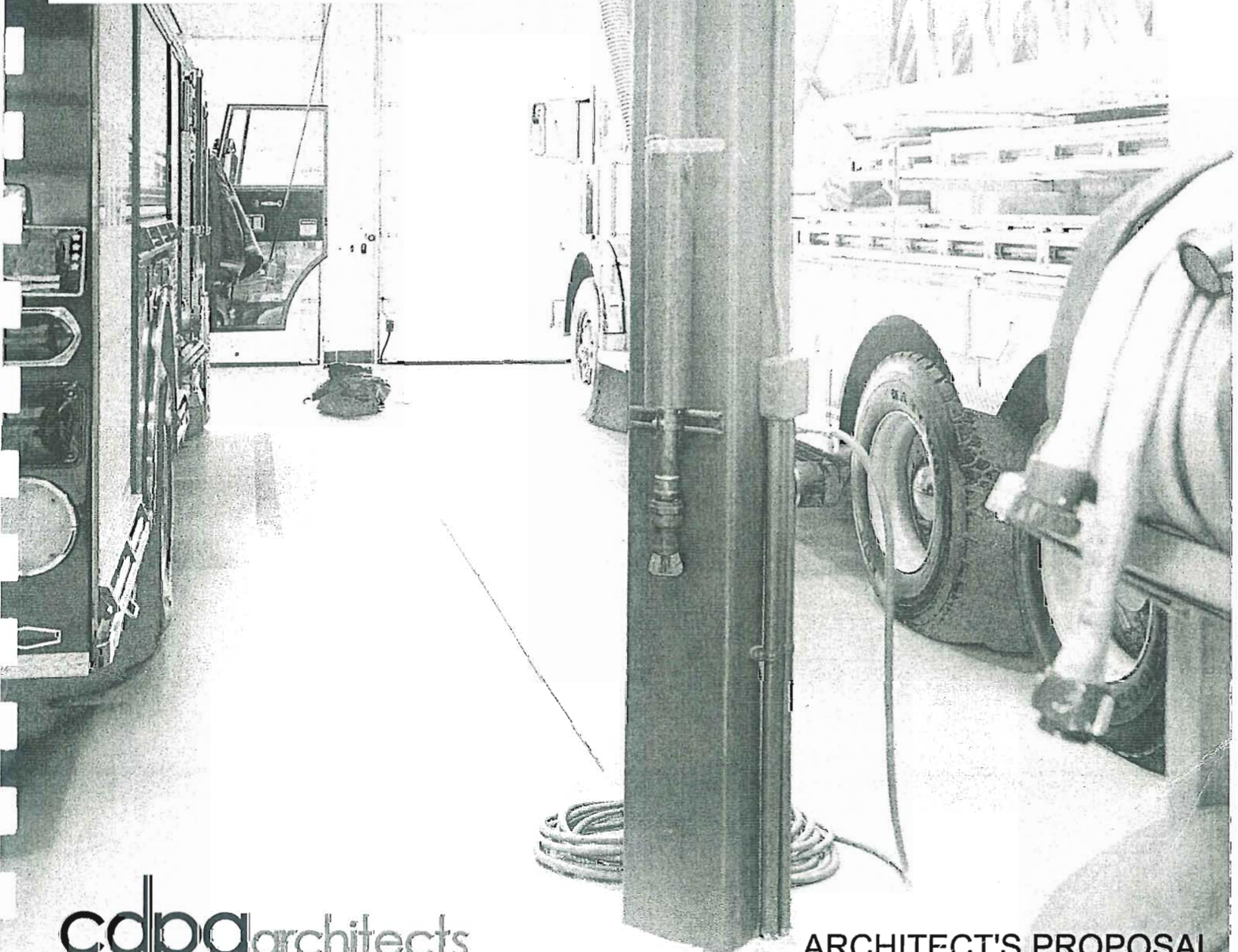
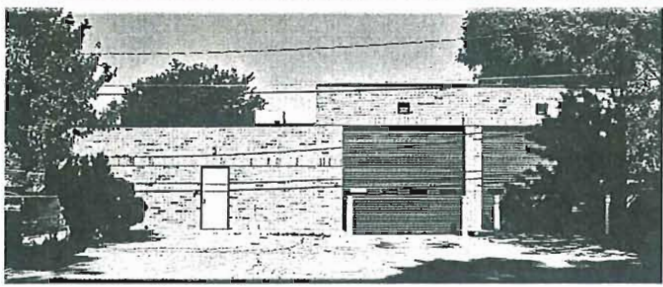
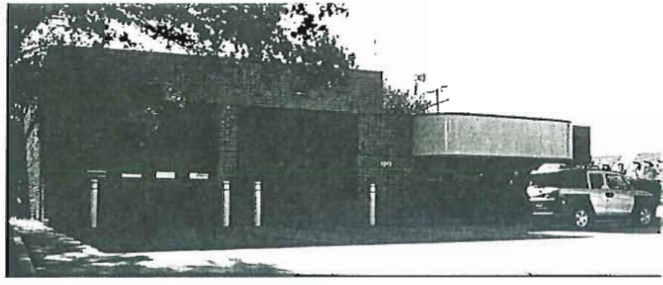
The City of Novi QBS Team consisted of personnel from Engineering, Finance, Fire, City Manager's and Community Development Departments. CDPA is the recommended architectural firm to proceed with Fire Station # 2 architectural and engineering services for the addition and renovation based upon the QBS rating and their bid price. The firm which submitted a slightly lower bid was the lowest ranked firm and did not have the depth of experience that CDPA with related fire station projects.

**RECOMMENDED ACTION:** Approval to award a contract for Architectural Design and Engineering Services for the addition and renovation of Fire Station # 2 to CDPA for a not-to-exceed price of \$71,537 (includes \$2800 for alternate #1 – asbestos assessment and a 10 percent contingency for related project expenses).

	1	2	Y	N
Mayor Landry				
Mayor Pro Tem Capello				
Council Member Gatt				
Council Member Margolis				

	1	2	Y	N
Council Member Mutch				
Council Member Nagy				
Council Member Paul				

**CITY OF NOVI**  
ARCHITECTURAL DESIGN/  
ENGINEERING SERVICES  
FIRE STATION NO. 2



October 16, 2007

Stacy E. Peterson, AIA  
John P. Argenta, AIA  
Najim N. Saymuah, AIA

City of Novi  
45175 W. Ten Mile Road  
Novi, Michigan 48375-3024

Attention: Ms. Carol J. Kalinovik  
Purchasing Director

Re: CDPA Architect's Proposal  
Architectural Design &  
Engineering Services  
City of Novi Fire Station No. 2

Dear Carol:

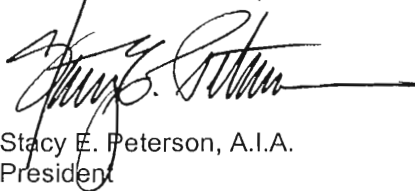
The City of Novi has completed an in-depth study and needs assessment for its Fire Station No. 2, and developed a program for maintenance, renovation and expansion of the facility. By issuance of a Request for Proposal, the City is now seeking the services of an experienced Architect to assist in this project.

CDPA Architects is a local firm with extensive fire station design experience. Having worked on more than 50 fire station projects, CDPA offers creative and functional solutions to the city of Novi, coupled with our knowledge of the challenges at Fire Station No. 2.

We have the specialized fire station experience, the dedicated staff and the professional resources to assist the City of Novi in a successful project. We look forward to working with the City and the Fire Department again.

Sincerely,

CDPA ARCHITECTS, INC.



Stacy E. Peterson, A.I.A.  
President

SEP/Im

Enclosure

pc: File

Cover Letter

Section **1** **PROJECT UNDERSTANDING**

- Approach
- Schedule

Section **2** **RELATED PROJECT EXPERIENCE**

- Introduction to CDPA
- Fire Station Experience
- References

Section **3** **LOCAL KNOWLEDGE**

- Previous Experience

Section **4** **PROJECT TEAM**

- Team Assignments
- Resumes
- Organization Chart

Section **5** **ESTIMATE OF HOURS**

**SECTION 1**  
**Project**  
**Understanding**

**City of Novi**  
**Fire Station No. 2**

*Management  
Approach*

CDPA has reviewed the City of Novi's Request for Proposal for Professional Architectural Services. We understand that the City will require full architectural and engineering services for the maintenance, renovation and expansion to the City of Novi Fire Station No. 2. To specifically meet the City's needs, our management approach and corresponding services will be divided into the following phases:

*Programming/  
Design*

**PROGRAMMING / DESIGN PHASE**

- CDPA will conduct a Project Start-Up meeting with key personnel from the City of Novi and the Novi Fire Department to review and confirm Project goals, procedures, targets of and appointments for interviews, etc.
  - Interview targeted City and Fire Department personnel identified in the start-up conference. Goals of these interviews are to:
    - » Identify/confirm station needs
    - » Identify and list factors which might influence growth or contraction of personnel/equipment needs
    - » Identify/confirm the existing design
- Review the existing design plan for confirmation or modification to meet the City's updated requirements.
- From the refined design plan and interviews, CDPA will prepare a preliminary design to include:
  - » Floor plan
  - » Determination of areas for circulation and support
  - » Individual room functions
  - » Salient features to be included in each space
  - » Preliminary layout of major "fixed" equipment and furnishings

**SECTION 1**  
**Project**  
**Understanding**

**City of Novi**  
**Fire Station No. 2**

*Programming/  
Design  
(Continued)*

- Provide topographic and tree surveys allied to the Project. Project does not fall into wetland area - no delineation required.
- Provide geotechnical investigation to include soil borings allied to the Project.
- Refinement of conceptual plans with Owner reviews and input to achieve confirmed Design plan.
- Prepare an Estimate of Probable Construction cost based upon the confirmed Design plan. CDPA will utilize the staff and expertise of our subsidiary company, ArCon Services, for preparation of this construction cost estimate.
- At the conclusion of the Design phase, we will provide the City with the following deliverables:
  - » Overall site plan.
  - » Dimensioned drawings showing building elevations and exterior envelope.
  - » Dimensioned drawings of floor plans.
  - » Preparation of an itemized cost estimate based on the Design package above described.
- Presentation of the Design plans and cost estimate for formal City approval.
- Prepare necessary applications, submittals and attendance at meetings associated with Zoning Board of Appeals and Site Plan Approval process.

**SECTION 1**  
Project  
Understanding

**City of Novi**  
**Fire Station No. 2**

*Construction  
Documents*

**DEVELOPMENT OF FINAL PLANS, SPECIFICATIONS AND  
BIDDING DOCUMENTS**

- Prepare all Trades (Architectural, Civil, Structural, Mechanical & Electrical) construction documents consisting of drawings and specifications necessary for the receipt of competitive construction contract bids.
- Conduct progress review meetings with the City and Fire Department administration and staff at appropriate intervals to facilitate communication, comments and approvals.
- Preparation of an Estimate of Probable Construction Cost based on quantity take-offs.
- Presentation of the final Construction Document plans, specifications and cost estimate for formal City approval.

*Note:* During this phase, planning and coordination with the Fire Department and the Program Manager will be required for the phasing of construction or other considerations in order to maintain public safety operations during construction. The documents must reflect this information for the Contractor's planning for bids and construction.

*Bidding*

- Assist the City of Novi and the Program Manager in the solicitation, receipt, and analysis of construction bids.
- Assist the City and the Program Manager in conducting a pre-bid meeting with prospective bidding contractors.
- In association with the Program Manager, prepare a written recommendation for award of a construction contract.

**SECTION 1**  
Project  
Understanding

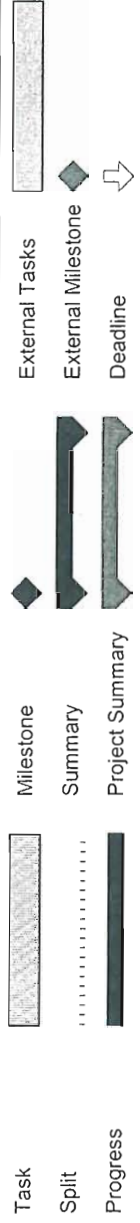
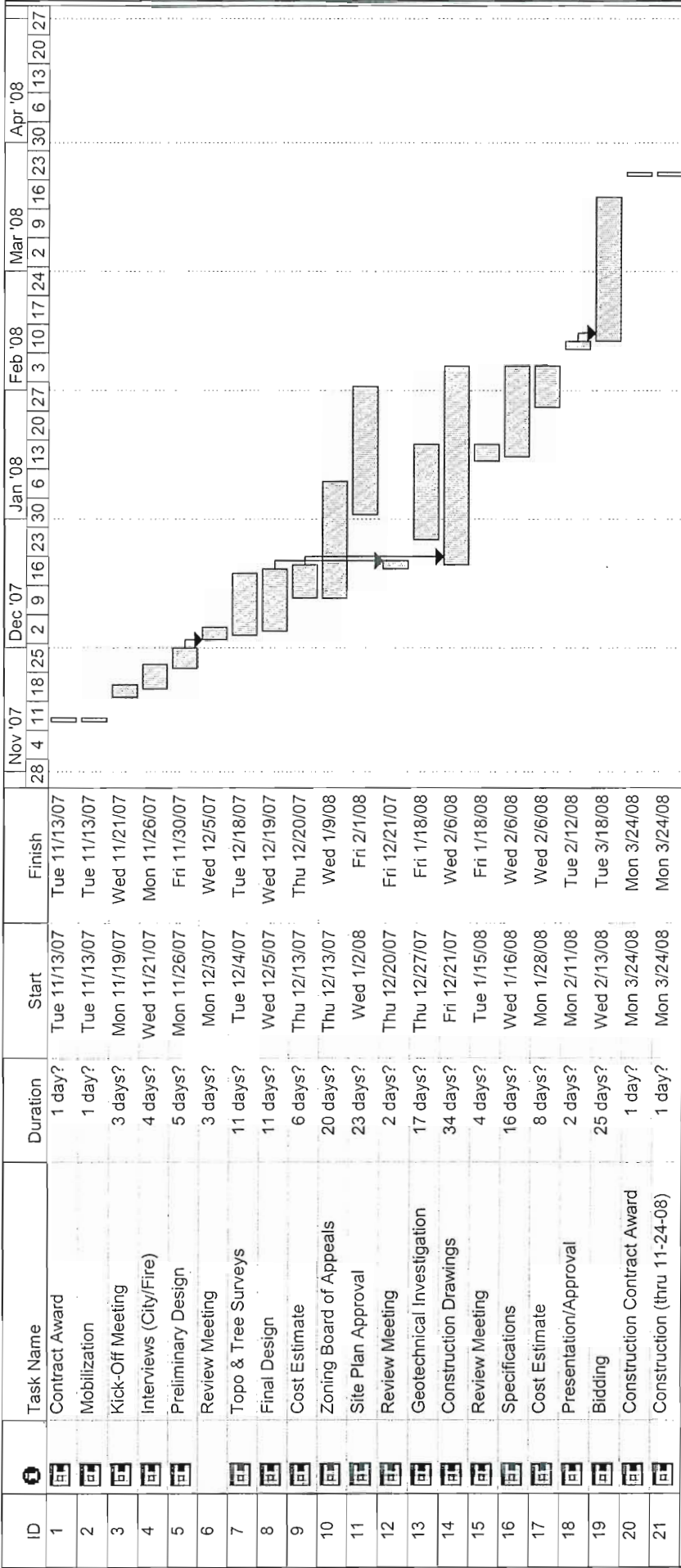
**City of Novi**  
**Fire Station No. 2**

*Construction*

CONSTRUCTION PHASE

- Following the award of a Construction Contract by the City of Novi, provide architectural/engineering supervision, and review of submittals to include shop drawings through completion of construction.
- Review and certification of the contractor's monthly applications for payment.
- Construction staking.
- Construction materials testing.
- Full-time construction inspection during active sitework construction.
- Preparation of a color and material finish schedule based on the owner-approved color selections presented by CDPA.
- In association with the Program Manager, conduct project close-out services to include inspection and certifications for substantial and final completion, and review of Contractor's guarantees, warranties, maintenance and operating instructions, and the Contractor's as-built drawings.
- Submittal of required record drawings.





Project: Novi Fire Station No. 2  
Date: Mon 10/15/07

**SECTION 2**  
**Related**  
**Project**  
**Experience**

**City of Novi**  
**Fire Station No. 2**

*Introduction*

CDPA Architects has provided comprehensive architectural/engineering services for a diversity of clients and projects on a national scale for over 40 years. Our commitment to quality services coupled with experience and accountability is the foundation of our organization.

CDPA is a multi-discipline, full service architectural/engineering group managed and directed by seasoned professionals. We have a broad base of experience in the field of public work and the use of public funds, and understand our responsibility for work produced in the public sector.

*Fire Station Experience*

Fire Station Facilities are a specialty of CDPA Architects. **We have completed the planning and/or construction of 30 Fire Station projects in the last six years alone.** New projects of a major scale and complexity are typical, however, remodeling and expansion of existing Fire Station facilities have been completed with equal attention. Our track record includes:

Fire Stations - Constructed	38
Fire Stations - Additions/Renovation	5
Fire Stations - Needs Studies	8
Fire Stations - Design/Under Construction	<u>4</u>
Total Fire Station Projects	55

Each Fire Station is custom programmed and designed to meet the unique functional and operational needs of that Department. This is even more applicable when renovating or expanding a station to meet changing equipment or operational needs. A balance between function, building constraints and budget must be accounted for in the design.

Attached is a list of CDPA's fire station projects.

**SECTION 2**  
Related  
Project  
Experience

**City of Novi**  
**Fire Station No. 2**

*References*

The following is a representative list of personal references for contact concerning the experience, the abilities and the quality of service by CDPA Architects. Each person listed has a direct working knowledge of the performance of the Principals and staff of CDPA. We have purposely selected "old" clients and "new" clients for a cross section of experience.

PROJECT

1. FARMINGTON HILLS / SATELLITE FIRE STATION  
Contact: Chief Richard Marinucci  
Telephone: (248) 871-2810
  
2. CANTON TOWNSHIP HQ FIRE STATION  
Contact: Chief Mike Rorabacher  
Telephone: (734) 397-3000
  
3. LYON TOWNSHIP HQ / SATELLITE FIRE STATIONS (2)  
Contact: Chief Les Cash  
Telephone: (248) 486-3775
  
4. VAN BUREN TOWNSHIP HQ / SATELLITE FIRE STATIONS (2)  
Contact: Chief Mark Nicholai  
Telephone: (734) 699-8928
  
5. MACOMB TOWNSHIP SATELLITE FIRE STATIONS (2)  
Contact: Chief Bob Phillips  
Telephone: (586) 286-0030
  
6. OAKLAND TOWNSHIP FIRE STATION  
Contact: Chief Bill Benoit  
Telephone: (248) 651-7340
  
7. NOVI / NEEDS ASSESSMENT  
Contact: Chief Frank Smith  
Telephone: (248) 349-2162

**SECTION 3**  
**Local**  
**Knowledge**

**City of Novi**  
**Fire Station No. 2**

*General*

CDPA has been located in Oakland County for nearly 40 years and has completed fire station projects for the City of Southfield, Village of Beverly Hills, West Bloomfield Township, City of Berkley, City of Royal Oak, Lyon Township, City of Farmington Hills, Oxford Township, Independence Township, Oakland Township, Orion Township and the City of Novi.

*City of Novi*

CDPA has a working knowledge of the staff and planning procedures for projects in the City of Novi. CDPA was the Architect for the City's conversion of the Library into City Offices (prior to the present City Hall facility), the Police Building (1976), the Police Training Center Addition (2001) and conducted the Novi Fire Department Architectural Analysis/Needs Assessment for stations No. 1, 2 and 3. CDPA also worked closely with the City Administration and planning staff for the new Catholic Central High School, and is presently working on the new St. Catherine's High School project.

*Fire Station Projects*

As previously related in Section 2 of this Proposal, CDPA has completed the planning and/or construction of 55 fire station projects. We have the experience in renovation of existing stations and understand the commonalities of fire station requirements whether they are located in urban, suburban or rural settings, and whether operated with full-time, paid-on-call, part-pay or volunteer firefighters.

## fire stations



**MULTI-USE FIRE STATION (2006-2007)**  
City of Kalamazoo

Kalamazoo, MI

A 17,500 sq. ft. Fire Station serving the City of Kalamazoo Public Safety Department (Police and Fire).



**SOUTH FIRE STATION NO. 1 (2006)**  
Van Buren Township

Van Buren Township, MI

A 13,000 sq. ft. satellite fire station with 3-bay drive-thru apparatus, hose drying tower and training room.



**NORTH FIRE STATION NO. 2 (2006)**  
Van Buren Township Downtown Development Authority

Van Buren Township, MI

A 17,300 sq. ft. Headquarters Fire Station on a new site. Unique 4-bay drive-thru with center apparatus support spine that enables convenient, shorter access for services. Integrates physical training, interior maze set-ups and rear training tower hose drying in center spine.



**AIRCRAFT RESCUE AND FIRE FIGHTING STATION (2006)** Wayne County, MI  
Wayne County Airport

A 6,523 sq. ft. Aircraft Rescue and Fire Fighting (ARFF) Station at Detroit Metropolitan Wayne County Airport. Two-bay drive-thru station for airport fire fighting apparatus with facilities for four full-time employees. Extensive site work to suit vehicles with 90-foot turning radius.



**FIRE STATION NO. 3 (2005)**  
City of Farmington Hills

Farmington Hills, MI

A 23,220 sq. ft. three-bay drive-thru Fire Station No. 3 is designed to house six full-time employees with 3 additional special assignment personnel during the day. Includes multi-purpose/community room which supports both the fire department and public activities.



**SATELLITE FIRE STATION NO. 3 (2005)**  
Macomb Township

Macomb Township, MI

An 11,840 sq. ft. fire station with three-bay apparatus room, locker rooms, training area and support. The station is designed for six full time fire fighters.

## fire stations cont.



**FIRE STATION NO. 4 (2005)**  
Macomb Township

Macomb Township, MI

An 11,200 sq. ft. with 3-bay apparatus includes an exercise room, training/conference room, kitchen and locker rooms for both male and female fire fighters.



**SATELLITE FIRE STATION (2005)**  
Canton Township

Canton Township, MI

An 11,600 sq. ft. Satellite Fire Station in an area of new residential development, with facilities for six fire fighters plus training/community room.



**HEADQUARTERS FIRE STATION (2005)**  
Superior Charter Township

Superior Township, MI

A 10,500 sq. ft. three-bay Headquarters Fire Station with hose drying tower.



**FIRE STATION NO. 3 (2005)**  
Brandon Township

Ortonville, MI

A 6,910 sq. ft. with 4-bay apparatus room designed as an unmanned station to start, but planned to evolve into a full-time staffed station.



**HEADQUARTERS FIRE STATION (2004)**  
City of Madison Heights

Madison Heights, MI

A 19,540 sq. ft. 5-bay drive-thru Headquarters Fire Station. Includes training tower with draft pit, offices, EOC, EMS, decontamination, and SCBA repair areas. Project included demolition of existing station and minor alterations at second station.



**MAIN FIRE STATION (2004)**  
West Bloomfield Township

West Bloomfield Township, MI

A 17,700 sq. ft. Main Fire Station on wooded site in residential area. Tree preservation accomplished by 2-story wings on each side of apparatus room. West wing is fire fighters living quarters. East wing is Fire Administration and Training/EOC. Apparatus room has 4 drive-thru bays and a central apparatus repair bay.

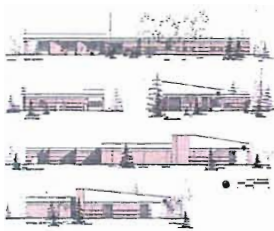
## fire stations cont.



**FIRE STATION NO. 4 (2004)**  
City of Royal Oak

Royal Oak, MI

A 9,034 sq. ft. Fire Station No. 4, site is on a prominent corner at Woodward and 13 Mile Road. It is extremely narrow with a baseball field on the north and the street on the south. This long narrow aspect is the prime design face of the new building.



**FIRE STATION NO. 1 (2004)**  
Clinton Township

Clinton Township, MI

An 11,400 sq. ft. needs study and design for new Fire Station No. 1 located in median of major traffic thoroughfare. Three-bay drive-thru apparatus room, living quarters for eight fire fighters, physical training room and Township storage.



**HEADQUARTERS FIRE STATION (2003)**  
City of Wayne

Wayne, MI

A 17,200 sq. ft. Headquarters Fire Station with a 5,000 sq. ft. partial basement includes a 4-bay apparatus room, training center, offices, and living quarters.



**FIRE STATION NO. 3 (2003)**  
City of Royal Oak

Royal Oak, MI

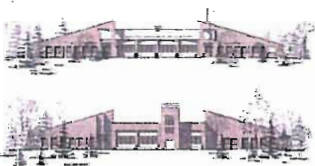
A 9,940 sq. ft. two-story with 2-1/2 bay apparatus, replacement fire station constructed on the site of a 50 year old station. Station includes living quarters, training room and decontamination space.



**HEADQUARTERS FIRE STATION (2003)**  
City of Royal Oak

Royal Oak, MI

A 15,063 sq. ft. renovation and vertical expansion of existing urban Fire Station Headquarters. Addition contains training room and area for selective-use training tower.



**FIRE STATION NO. 5 (2003)**  
Clinton Township

Clinton Township, MI

A 16,664 sq. ft. needs study for new four-bay Fire Station No. 5 for eight fire fighters with dual mission of providing a training center for all Township Fire-Rescue-EMS. The station also houses a semi-truck containing first response equipment and a trench rescue trailer.

## fire stations cont.



**CENTRAL FIRE STATION (2003)**  
Delta Township

Delta Township, MI

A 24,813 sq. ft. six-bay drive-thru Central Fire Station with new civic center park development on major intersection. Park site available due to demolition of existing station.



**HEADQUARTERS FIRE STATION NO. 1 (2002)**  
Oxford Township

Oxford Township, MI

A 16,170 sq. ft. four-bay drive-thru Headquarters Fire Station with fire administration, training, living quarters for future 8 fire fighters. Building design relates to forms and ornament in present Village of Oxford architecture.



**FIRE STATION NO. 2 (2002)**  
Oxford Township

Oxford Township, MI

A 9,600 sq. ft. Fire Station No. 2, includes a 2-bay drive-thru branch fire station on a corner residential area site. Present paid on-call department. Design permits future manned station with residential style to blend with neighborhood.



**4TH PRECINCT PUBLIC SERVICE MALL (2002)**  
City of Detroit Building Authority

Detroit, MI

A 54,290 sq. ft. multi-function building in empowerment zone to bring services to southwest Detroit. 283 sworn officer Police Precinct, 36th District Court, 2 company plus "EMS" Fire Station, Michigan State Police Facility, Parking Bureau office, Wayne County Juvenile office. CDPA consulting design architect.



**INTERIM FIRE STATION/DPW (2002)**  
City of Wayne

Wayne, MI

A 10,800 sq. ft. temporary fire station turned public works for the City of Wayne. The City had two building needs: One was for a temporary Fire Headquarters Station during construction of a new building, the other was for a Department of Public Works repair garage, offices, and employee quarters.



**PUBLIC SAFETY BUILDING (2002)**  
Northfield Township

Northfield Township, MI

A 49,113 sq. ft. two-story plus partial basement Police/Fire/Township Hall building. Facility includes 5-bay apparatus room, mezzanine, hose tower, locker rooms, living area, offices and future EOC totaling 15,700 sq. ft. for fire operations.



## fire stations cont.

### FIRE STATION (2002) City of Howell

Howell, MI

Assessment and alterations to 25 year old fire station to provide new training, exercise and administration addition. New addition style matches existing building.



### FIRE STATION NO. 2 (2002) Oakland Township

Oakland Township, MI

A 17,500 sq. ft. four-bay drive-thru Fire Station Headquarters, training and future living quarters for present paid-on-call fire service.



### POLICE/COURT BUILDING & FIRE STATION (2001) City of Roseville

Roseville, MI

A 13,363 sq. ft. fire station with additions to police and court building. All work performed while maintaining full operation of both units. Related site improvements and adjacent fire station addition included.



### CREST (2001) Oakland Community College

Auburn Hills, MI

A 37,931 sq. ft. design of Oakland Community College new multi-function, fire simulation training facility.



### FIRE STATION NO. 1 (2000) Lyon Township

Lyon Township, MI

A 12,300 sq. ft. three-bay drive-thru Fire Station No. 1. Facility contains training, work/service and multi-purpose room areas.



### FIRE STATION NO. 2 (2000) Lyon Township

Lyon Township, MI

A 5,562 sq. ft. three-bay drive-thru Fire Station No. 2. Facility has male/female locker/toilet rooms with space for future expansion. Residential style located in upscale residential development.

## fire stations cont.



**HEADQUARTERS FIRE STATION (1999)**  
City of Dearborn Heights

Dearborn Heights, MI

A 17,100 sq. ft. four-bay drive-thru Headquarters Fire Station with administrative offices, training area, all services, living quarters, emergency power and site improvements to include a training tower and fueling station.



**FIRE STATION NO. 3 (1999)**  
City of Livonia

Livonia, MI

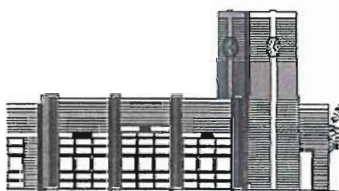
A 10,500 sq. ft. three-bay drive-thru Fire Station No. 3 complete with living quarters, training area, all services, emergency power and site improvements.



**SOUTH FIRE STATION (1999)**  
Redford Township

Redford Township, MI

A 13,380 sq. ft. Fire Station South, 3-bay drive-thru fire station with upgrading of adjacent recreation facility.



NORTH ELEVATION

**FIRE STATION (1999)**  
City of Fenton

Fenton, MI

Investigation and recommendations for existing Fire Station with historical significance to include analysis for repair, renovation or replacement with alternative uses.



**PUBLIC SAFETY TRAINING FACILITY (1998)**  
City of Maumee, Ohio

Maumee, OH

A 17,075 sq. ft. facility study to include investigation, site analysis and recommendations for new joint Public Safety (Fire & Police) Training Facility. Elements include fire simulation structures, indoor and outdoor gun range and classroom facility.

**FIRE STATION (1997)**  
Redford Township

Redford Township, MI

Physical plant assessment and facilities needs analysis to determine feasibility and costs of alterations and additions to two existing buildings.

## fire stations cont.



**FIRE STATION HEADQUARTERS (1997)**  
Charter Township of Canton

Canton Township, MI

A 16,000 sq. ft. five-bay drive-thru Headquarters Fire Station with offices and site improvements and second floor addition to Public Safety Building.



**FIRE STATION HQ & SHERIFF'S SUBSTATION (1996)**  
Charter Township of Independence

Independence Twp., MI

An 18,660 sq. ft. Fire Station No. 1 with administrative offices and County Sheriff substation.



**POLICE, FIRE, & COURT BUILDING (1995)**  
Saginaw Chippewa Indian Tribe of Michigan

Mount Pleasant, MI

A 35,900 sq. ft. Police, Fire and Court facility located on a central site within the tribal land of the Saginaw Chippewa Indian Tribe. This building complex includes 15,300 sq. ft. for police operations and police and fire administration.



**FIRE STATION NO. 2 (1992)**  
City of Warren

Warren, MI

A 19,000 sq. ft. alterations and additions to an existing City owned warehouse building to provide for the new Fire Department Headquarters and new 2-bay drive-thru Fire Station No. 2.



**FIRE STATION NO. 4 (1992)**  
City of Warren

Warren, MI

A 6,520 sq. ft. two-bay Fire Station No. 4 complete with all mechanical/electrical equipment, standby emergency power, parking and site improvements.



**FIRE STATION NO. 3 (1991)**  
Plymouth Township

Plymouth Township, MI

An 18,660 sq. ft. Fire Station No. 3 with hose tower and training area in east parking lot.

## fire stations cont.



**FIRE STATION NO. 2 (1990)**  
Charter Township of Meridian

Meridian Township, MI

An 8,940 sq. ft. three-bay South Fire Station complete with all services, emergency power and site improvements.



**FIRE STATION & PUBLIC SAFETY BUILDING (1989)**  
City of Berkley

Berkley, MI

A 25,000 sq. ft. multi-story Public Safety building with 3-bay Headquarters Fire Station complete with all site improvements.



**PUBLIC SAFETY BUILDING (1989)**  
Village of Beverly Hills

Beverly Hills, MI

A 17,200 sq. ft. Police/Fire Headquarters building with 3-bay fire station complete with all site improvements.



**HEADQUARTERS FIRE STATION (1987)**  
Clinton Township

Clinton Township, MI

A 10,500 sq. ft. three-bay drive-thru Headquarters Fire Station with facilities complete with all site improvements.



**FIRE STATION NO. 3 (1986)**  
City of Warren

Warren, MI

A 7,000 sq. ft. two-bay drive-thru Fire Station No. 3 with hose tower, to include all site improvements. Project included demolition and removal of existing fire station on-site.



**FIRE STATION NO. 1 (1981)**  
Orion Township

Orion Township, MI

A 5,000 sq. ft. three-bay drive-thru Fire Station No. 1 with hose tower, to include all site improvements.

**SECTION 4**  
**Project**  
**Team**

**City of Novi**  
**Fire Station No. 2**

*Resumes for  
CDPA Principals,  
Project Architect,  
Key Management  
and Key Personnel  
by discipline for the  
Project*

**CDPA Principals**

- \* Stacy E. Peterson, AIA - President  
John P. Argenta, AIA - Vice-President / Secretary  
Najim N. Saymuah, AIA - Vice President
- \* Principal-In-Charge

**Project Architect**

Steven J. Flickema, RA

**Key Management**

Stacy E. Peterson, AIA

**Key Personnel**

Kern Gilson - Architectural  
William Lefkofsky, P.E. - Structural (L&A, Inc.)  
Julian Wargo, P.E. - Civil (Zeimet Wozniak & Associates)  
William Wiemer - Cost Estimating  
Steven J. Smilnak - Project Accounting

*Organization  
Chart*

Attached is a Project Team organizational chart reflecting the project assignments and resumes of key staff members. In addition to the key staff, a technical staff of planners, designers, drafters, artists, and other technicians, as well as office and clerical personnel will be assigned to the project by discipline and number according to the tasks for each phase of the work. Over 75 staff members are available for assignment to the Project Team in this regard.

The Principal-In-Charge and Project Architect and key staff have been selected on the basis of qualifications in this building type and availability for the duration of the Project.

**SECTION 4**  
Project  
Team

**City of Novi**  
**Fire Station No. 2**



**Stacy E. Peterson, AIA**  
Principal-In-Charge

*Year of Profession*

Since 1971

*Areas of Expertise*

Project Administration  
Contracts and Construction Administration  
Project Scheduling  
Programming

*Representative  
Project Experience*

<u>FIRE STATIONS</u>	<u>FIRE STATIONS</u>	<u>PUBLIC SAFETY</u>
Clinton Township-New	Clinton Township-Study (2)	Maumee, OH-Study
Royal Oak-New	Howell-Study	Berkley-New
Royal Oak-Renovation (2)	Detroit-New	Beverly Hills-New
Oxford-New (2)	Oakland Township-New	
Northfield Township-New	Wayne-New (2)	
Delta Township-New	Lyon Township-New (2)	
West Bloomfield Twp-New	Redford Township-New	
Livonia-New	Dearborn Heights-New	
Fenton-Study	Redford Township-Study	
Canton Township-New	Saginaw Chippewa Indian Tribe-New	
Independence Twp-New	Warren-New (2)	
Warren-Renovation (1)	Plymouth Township-New	
Meridian Township-New	Orion Township-New	
Southfield HQ-New	Roseville-Renovation	
Brandon Township-New	Macomb Township-New (2)	
Superior Township-New	Van Buren Township-New (2)	
Novi-Study	Kalamazoo-New	

*Education*

Western Michigan University  
Bachelor of Science - 1967  
Lawrence Technological University  
Bachelor of Science - Architecture - 1973

*Professional  
Affiliations*

American Institute of Architects (AIA)  
National Fire Protection Association (NFPA)  
Michigan Association of Chiefs of Police (MACP)  
Southeast Michigan Association of Fire Chiefs (SMAFC)

*Professional  
Registration*

Registered Architect in Michigan

**SECTION 4**  
Project  
Team

**City of Novi**  
**Fire Station No. 2**



**Steven J. Flickema, RA**  
Project Architect

*Year of Profession*

Since 1985

*Areas of Expertise*

Project Management  
Construction Documents

*Representative  
Project Experience*

FIRE STATIONS

Farmington Hills-New  
Macomb Township-New (2)  
Canton Township-New  
Superior Township-New  
Van Buren Township-New (2)  
Kalamazoo-New  
Novi-Study

*Education*

Lawrence Technological University  
Bachelor of Architecture - 1990

*Professional  
Affiliations*

Registered Architect in Michigan

**SECTION 4**  
Project  
Team

**City of Novi**  
**Fire Station No. 2**



***Kern Gilson***  
Construction Documents

*Year of Profession*

Since 1976

*Areas of Expertise*

Construction Documents

*Representative  
Project Experience*

FIRE STATIONS

FIRE STATIONS

Royal Oak-New  
Royal Oak-Renovation (2)  
Oxford-New (2)  
Delta Township-New  
Livonia-New  
Canton Township-New  
Farmington Hills-New  
Van Buren Township-New (2)

Oakland Township-New  
Wayne-New (2)  
Lyon Township-New (2)  
Redford Township-New  
Dearborn Heights-Jew  
Superior Township-New  
Macomb Township-New (2)

*Education*

Lawrence Technological University  
Bachelor of Architecture - 1983



**SECTION 4**  
Project  
Team

**City of Novi**  
**Fire Station No. 2**



**Steven J. Smilnak, CPA**  
Project Accounting

*Year of Profession*

Since 1978

*Areas of Expertise*

Project Accounting  
Contractor's Applications for Payment  
Project Scheduling

*Representative  
Project Experience*

FIRE STATIONS

FIRE STATIONS

Royal Oak-New  
Royal Oak-Renovation (2)  
Oxford-New (2)  
Delta Township-New  
Livonia-New  
Canton Township-New  
Van Buren Township-New (2)

Oakland Township-New  
Wayne-New (2)  
Lyon Township-New (2)  
Redford Township-New  
Dearborn Heights-new  
Macomb Township-New (2)

*Education*

Walsh College of Accountancy  
Bachelor in Accounting - 1978

*Professional  
Affiliations*

American Institute of Certified Public Accountants

*Professional  
Registration*

Certified Public Accountant in Michigan

**SECTION 4**  
Project  
Team

**City of Novi**  
**Fire Station No. 2**



***William M. Wiemer***  
Cost Estimating

*Year of Profession*

Since 1979

*Areas of Expertise*

Construction Management  
Project Administration  
Construction Cost Estimating

*Representative  
Project Experience*

FIRE STATIONS

Farmington Hills-New  
Macomb Township-New (2)  
Canton Township-New  
Superior Township-New  
Van Buren Township-New (2)  
Wayne (2)  
Novi-Study

*Education*

Lawrence Technological University  
Bachelor of Science - Civil Engineering - 1982

**SECTION 4**  
Project  
Team

**City of Novi**  
**Fire Station No. 2**



**William Lefkofsky, P.E.**  
Structural Engineer

*Year of Profession*

Since 1962

*Areas of Expertise*

Structural Engineering

*Representative  
Project Experience*

<u>FIRE STATIONS</u>	<u>FIRE STATIONS</u>	<u>PUBLIC SAFETY</u>
Clinton Township-New	Detroit-New	Berkley-New
Royal Oak-New	Oakland Township-New	Beverly Hills-New
Royal Oak-Renovation (2)	Wayne-New (2)	
Oxford-New (2)	Lyon Township-New (2)	
Northfield Township-New	Redford Township-New	
Delta Township-New	Dearborn Heights-New	
West Bloomfield Twsp.-New	Saginaw Chippewa Indian	
Livonia-New	Tribe-New	
Canton Township-New	Warren-New (2)	
Independence Township-New	Plymouth Township-New	
Warren-Renovation-New	Orion Township--New	
Southfield HQ-New	Roseville-Renovation	
Kalamazoo-New	Macomb Township-New (2)	
Van Buren Township-New (2)	Brandon Township-New	

*Education*

Detroit Institute of Technology  
Bachelor of Science - 1962  
Detroit College of Law  
Juris Doctor - 1973

*Professional  
Affiliations*

American Concrete Institute  
American Welding Society  
Concrete Products Build  
Michigan Society of Professional Engineers  
National Masonry Research Foundation  
The Masonry Society  
Michigan Bar Association

*Professional  
Registration*

Registered Professional Engineer in Michigan and 13 other states

**SECTION 4**  
**Project**  
**Team**

**City of Novi**  
**Fire Station No. 2**



**Julian J. Wargo, Jr., P.E.**  
Civil Engineer

*Year of Profession*

Since 1983

*Areas of Expertise*

Civil Engineering

*Representative  
Project Experience*

Mr. Wargo has worked with CDPA on eleven projects including the Novi Catholic Central High School project.

*Education*

University of Michigan  
Master of Urban Planning

University of Pennsylvania  
Bachelor of Science in Civil Engineering

*Professional  
Affiliations*

National Onsite Wastewater Recycling Association  
Michigan Stormwater - Floodplain Association  
Association of State Flood Plain Manager, Inc.  
Michigan Water Environment Association

*Professional  
Registration*

Registered Engineer in Michigan, Ohio, Florida

# Organizational Chart For City of Novi Fire Station No. 2

