



# CITY of NOVI CITY COUNCIL

[www.cityofnovi.org](http://www.cityofnovi.org)

Agenda Item H  
September 10, 2007

**SUBJECT:** Approval to award the 2007 Chip Seal Maintenance Contract to Highway Maintenance Construction in the amount of \$ 44,878.50.

**SUBMITTING DEPARTMENT:** Public Works ✓

**CITY MANAGER APPROVAL:** PWA for CJP

<b>EXPENDITURE REQUIRED</b>	\$ 44,878.50
<b>AMOUNT BUDGETED</b>	\$ 20,000.00
<b>LINE ITEM NUMBER</b>	204-204-00-866.000 (Municipal Street Fund)

**BACKGROUND INFORMATION:**

We received three quotes for the City's 2007 Chip Seal Program. Highway Maintenance Construction was the low qualified bidder and is an MDOT certified contractor. They have been the successful bidder for the past three years and we have been pleased with their performance and quality of work.

Contractor	Bid
Highway Maintenance Construction	\$ 44,878.50
Pavement Maintenance Systems	\$ 46,037.00
A & R Sealcoating, Inc.	\$ 46,106.80

We typically investigate chip sealed projects every three years following the original application. The following streets are scheduled for chip seal maintenance during the last two weeks of September.

Proposed Streets	Chip Seal Program Year	Length (Linear Feet)	Width	Square Yards	
				Single	Double
Burton	2004-2005	1,255	21		2,928
Joseph	2004-2005	1,175	21		2,742
Brenda Lane	2004-2005	315	21	735	
Paramount	2004-2005	1,050	20		2,333
Crown	2004-2005	300	21		700
Shawood	2004-2005	500	20	1,111	
Parklow	2004-2005	218	20	484	
Monticello	2004-2005	488	18	976	
Herman	2004-2005	508	17	960	
Lashbrook	2004-2005	220	21		513
Pleasant Cove	2004-2005	250	21		583
Sixth Gate		252	20		560
Eubank	2005-2006	800	15		1,333
Pickford	2005-2006	924	20	2,053	
Penhill	2005-2006	840	20	1,867	
<b>Total</b>		<b>9,095</b> ( 1.7 miles)		<b>8,186</b>	<b>11,692</b>

Throughout the year, we will monitor the Municipal Street Fund maintenance accounts to look for means to offset the additional chip seal costs. If needed, we will seek a budget amendment in the 4th quarter.

**RECOMMENDED ACTION:**

Approval to award the 2007 Chip Seal Maintenance Contract to Highway Maintenance Construction in the amount of \$ 44,878.50.

	1	2	Y	N
Mayor Landry				
Mayor Pro Tem Capello				
Council Member Gatt				
Council Member Margolis				

	1	2	Y	N
Council Member Mutch				
Council Member Nagy				
Council Member Paul				

August 27, 2007

Mr. William McCusker, Director  
City of Novi  
26300 Delwal  
Novi, MI 48375-3024

Subject: Quote for 2007 Chipseal Maintenance Program

Dear Benny,

We have looked at your list and put together the following proposal to maintain your chipseal streets.

1. We will patch the list of streets you supplied with a RA-200 seal patch machine using HF-RS2 asphalt emulsion and 2% latex and H-1 limestone aggregate. The cost to supply (3)men, machine, traffic control and materials is \$2,750.00 per 8 hour day. We would be able to load the emulsion in your machine for \$1.75 per gallon if you would like to have your crews work at the same time. We estimate it will take two days to patch the areas you specified for a cost of \$5,500.00.
2. We will apply a single and double chipseal repair to the streets listed using a CM-90 multi grade asphalt and 29a limestone aggregate. This is a new "hot" 270 degree material that has no water so there is no need for dry weather to drive off the water as in an emulsion. We have used this material with excellent results in terms of stone retention and minimal stone kickoff.

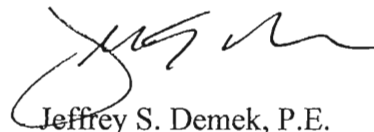
The cost for your requested chipseal repairs dated August 20, is as follows:

Single Chipseal-	8,200 sq.yds at \$1.41/sq.yd=	\$11,562.00
Double Chipseal-	11,690 sq.yds at \$2.85/sq.yd=	<u>\$33,316.50</u>
Total for Chipseal Repairs-		\$44,878.50

We hope this proposal meets with your approval. We value your work but have had to raise our prices due to large increases in material and fuel costs.

Please feel free to call with any questions.

Sincerely,



Jeffrey S. Demek, P.E.  
President



## Pavement Maintenance Systems, Inc.

384 Industrial Parkway • Imlay City, MI 48444  
(810) 724-4767



August 26, 2007

Mr. William McCusker, Director  
City of Novi  
26300 Delwal  
Novi, MI 48375-3024

REF: 2007 Chipseal Maintenance Quote

Mr McCusker,  
The following is our Quote for your requested work.

1. We will patch the list of streets you supplied with a AMZ patch machine using:  
HF-RS2 asphalt emulsion with 2% latex  
H-1 limestone aggregate.  
The cost for (3)men, machine, traffic control and materials is \$2,895.00 per day.

2. We will apply a single and double chipseal repair to the streets listed using:  
HR-RS2m asphalt emulsion at 0.39 gal/square yd. per application  
29a Slag aggregate at 23 lbs per square/yd per application

The cost to apply chipseal per your attached August 20 list is:

Single Chipseal- 8200 square yds.	@	\$1.48/sy=	\$12136.00
Double Chipseal- 11690 square yds	@	\$2.90/sy=	<u>\$33901.00</u>
			\$46037.00

Thank you for your request to bid.

Sincerely,

Ed Schwikert  
President



# A & R Sealcoating, Inc.

Asphalt Repair, Asphalt Curbing, & Hot Rubber Crackfilling

August 28, 2007

Mr. William McCusker, Director  
City of Novi  
26300 Delwal  
Novi, MI 48375-3024

Quote for 2007 Chipseal Maintenance

Mr McCusker,  
The submit the following Quote for your requested work.

**Patching:**

We will patch the list of streets you supplied with a AMZ patch machine using:  
HF-RS2 asphalt emulsion with 2% latex And H-1 limestone aggregate.

The cost for (3)men, machine, traffic control and materials is \$3025.00 per day.

**Chipseal:**

We will apply a single and double chipseal repair to the August 20 street list using:  
HR-RS2m asphalt emulion at 0.39 gal/square yd. per application and 29a limestone at 23 lbs  
per square/yd per application.

Single Chipseal- 8200 square yds.	@	\$1.46/sy=	\$11972.00
Double Chipseal- 11690 square yds	@	\$2.92/sy=	\$34134.80
			\$46106.80

Please feel free to call with any questions.

Sincerely,

Eugene Goss  
Operations Manager



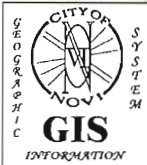


# City of Novi - Chip Seal Repairs Fall 2007

## Burton



Street	Length	Width	Sq. Yards
Burton	1,255	21	2,928

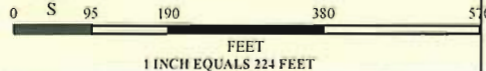


**CITY OF NOVI**  
 DEPARTMENT OF PUBLIC WORKS &  
 DEPARTMENTS OF WATER & SEWER  
 NOVI CITY DPW OFFICES  
 26300 DELWAL  
 NOVI, MI 48375  
 (248) 735-5640  
 WWW.cityofnovi.org



Map Print Date: August 30, 2007

Map Author: Jeff Van Curler



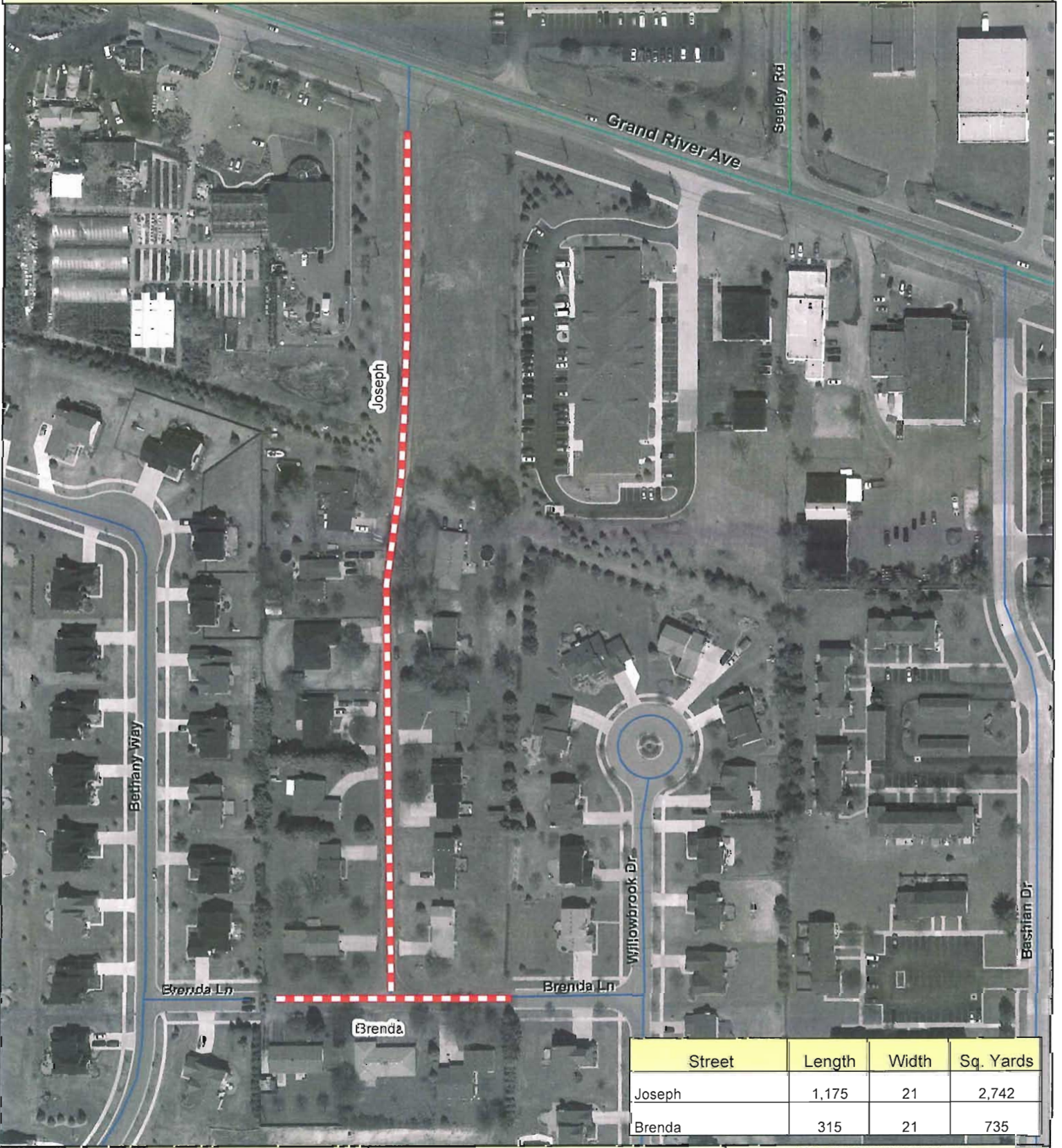
**MAP INTERPRETATION NOTICE**

Map information depicted is not intended to replace or substitute for any official or primary source. This map was intended to meet National Map Accuracy Standards and use the most recent, accurate sources available to the people of the City of Novi. Boundary measurements and area calculations are approximate and should not be construed as survey measurements performed by a licensed Michigan Surveyor as defined in Michigan Public Act 132 of 1970 as amended. Please contact the City GIS Manager to confirm source and accuracy information related to this map.

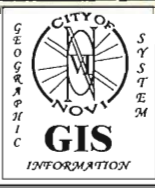


# City of Novi - Chip Seal Repairs Fall 2007

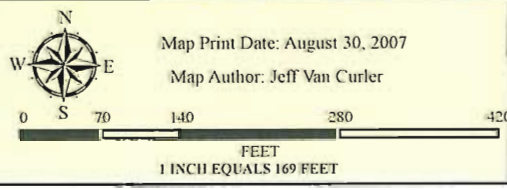
Joseph and Brenda



Street	Length	Width	Sq. Yards
Joseph	1,175	21	2,742
Brenda	315	21	735



**CITY OF NOVI**  
 DEPARTMENT OF PUBLIC WORKS &  
 DEPARTMENTS OF WATER & SEWER  
 NOVI CITY DPW OFFICES  
 26300 DELWAL  
 NOVI, MI 48375  
 (248) 735-5640  
 WWW.cityofnovi.org



**MAP INTERPRETATION NOTICE**  
 Map information depicted is not intended to replace or substitute for any official or primary source. This map was intended to meet National Map Accuracy Standards and use the most recent, accurate sources available to the people of the City of Novi. Boundary measurements and area calculations are approximate and should not be construed as survey measurements performed by a licensed Michigan Surveyor as defined in Michigan Public Act 132 of 1970 as amended. Please contact the City GIS Manager to confirm source and accuracy information related to this map.



# City of Novi - Chip Seal Repairs Fall 2007

## Paramount, Monticello, Herman, Parklow and Lashbrook



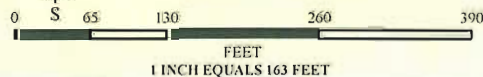
Street	Length	Width	Sq. Yards
Paramount	1,050	20	2,333
Parklow	218	20	484
Monticello	488	18	976
Herman	508	17	960
Lashbrook	220	21	513



**CITY OF NOVI**  
 DEPARTMENT OF PUBLIC WORKS &  
 DEPARTMENTS OF WATER & SEWER  
 NOVI CITY DPW OFFICES  
 26300 DELWAL  
 NOVI, MI 48375  
 (248) 735-5640  
 WWW.CI.NOVI.MI.US



Map Print Date: August 30, 2007  
 Map Author: Jeff Van Curler



**MAP INTERPRETATION NOTICE**

Map information depicted is not intended to replace or substitute for any official or primary source. This map was intended to meet National Map Accuracy Standards and use the most recent, accurate sources available to the people of the City of Novi. Boundary measurements and area calculations are approximate and should not be construed as survey measurements performed by a licensed Michigan Surveyor as defined in Michigan Public Act 132 of 1970 as amended. Please contact the City GIS Manager to confirm source and accuracy information related to this map.



# City of Novi - Chip Seal Repairs Fall 2007

Pleasant Cove, Shawood and Crown



Street	Length	Width	Sq. Yards
Pleasant Cove	250	21	583
Crown	300	21	700
Shawood	500	20	1,111

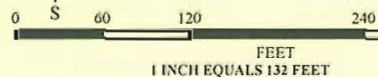


**CITY OF NOVI**  
 DEPARTMENT OF PUBLIC WORKS &  
 DEPARTMENTS OF WATER & SEWER  
 NOVI CITY DPW OFFICES  
 26300 DELWAL  
 NOVI, MI 48375  
 (248) 735-5640  
 WWW.cityofnovi.org



Map Print Date: August 30, 2007

Map Author: Jeff Van Curler



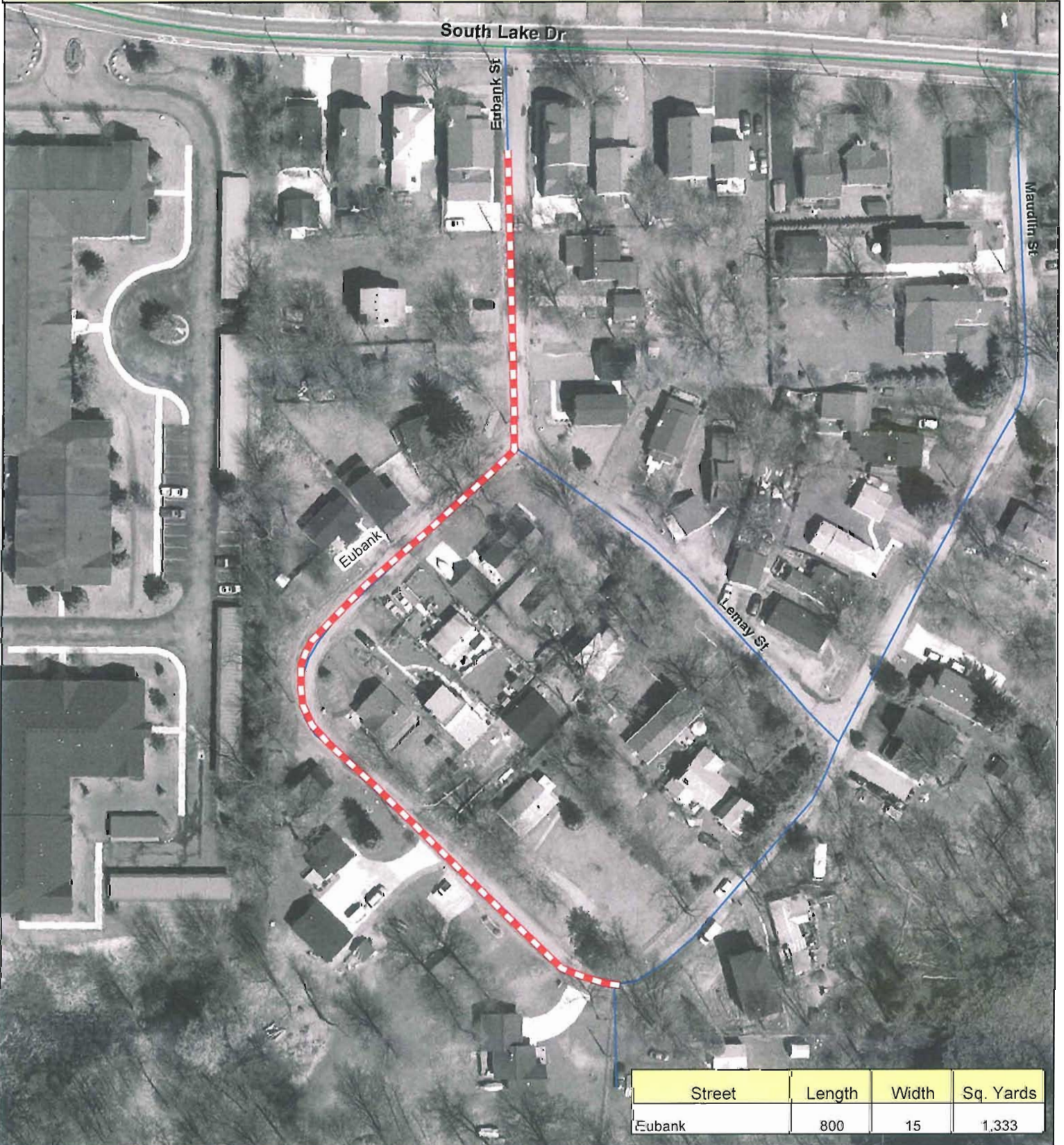
**MAP INTERPRETATION NOTICE**

Map information depicted is not intended to replace or substitute for any official or primary source. This map was intended to meet National Map Accuracy Standards and use the most recent, accurate sources available to the people of the City of Novi. Boundary measurements and area calculations are approximate and should not be construed as survey measurements performed by a Licensed Michigan Surveyor as defined in Michigan Public Act 132 of 1970 as amended. Please contact the City GIS Manager to confirm source and accuracy information related to this map.

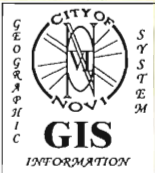


# City of Novi - Chip Seal Repairs Fall 2007

## Eubank



Street	Length	Width	Sq. Yards
Eubank	800	15	1,333

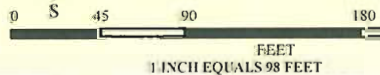


**CITY OF NOVI**  
 DEPARTMENT OF PUBLIC WORKS &  
 DEPARTMENTS OF WATER & SEWER  
 NOVI CITY DPW OFFICES  
 26300 DELWAL  
 NOVI, MI 48375  
 (248) 735-5640  
 WWW.cityofnovi.org



Map Print Date: August 30, 2007

Map Author: Jeff Van Curler



**MAP INTERPRETATION NOTICE**

Map information depicted is not intended to replace or substitute for any official or primary source. This map was intended to meet National Map Accuracy Standards and use the most recent, accurate sources available to the people of the City of Novi. Boundary measurements and area calculations are approximate and should not be construed as survey measurements performed by a Licensed Michigan Surveyor as defined in Michigan Public Act 132 of 1970 as amended. Please contact the City GIS Manager to confirm source and accuracy information related to this map.

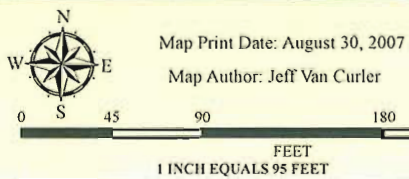


# City of Novi - Chip Seal Repairs Fall 2007

## Sixth Gate



**CITY OF NOVI**  
 DEPARTMENT OF PUBLIC WORKS &  
 DEPARTMENTS OF WATER & SEWER  
 NOVI CITY DPW OFFICES  
 26300 DELWAL  
 NOVI, MI 48375  
 (248) 735-5640  
 WWW.cityofnovi.org



**MAP INTERPRETATION NOTICE**  
 Map information depicted is not intended to replace or substitute for any official or primary source. This map was intended to meet National Map Accuracy Standards and use the most recent, accurate sources available to the people of the City of Novi. Boundary measurements and area calculations are approximate and should not be construed as survey measurements performed by a Licensed Michigan Surveyor as defined in Michigan Public Act 132 of 1970 as amended. Please contact the City GIS Manager to confirm source and accuracy information related to this map.

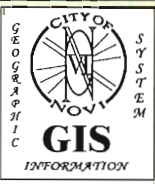


# City of Novi - Chip Seal Repairs Fall 2007

## Penhill and Pickford



Street	Length	Width	Sq. Yards
Penhill	840	20	1,867
Pickford	924	20	2,053

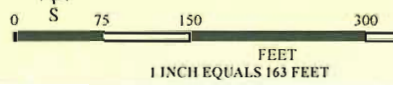


**CITY OF NOVI**  
 DEPARTMENT OF PUBLIC WORKS &  
 DEPARTMENTS OF WATER & SEWER  
 NOVI CITY DPW OFFICES  
 26300 DELWAL  
 NOVI, MI 48375  
 (248) 735-5640  
 WWW.cityofnovi.org



Map Print Date: August 30, 2007

Map Author: Jeff Van Curler



**MAP INTERPRETATION NOTICE**

Map information depicted is not intended to replace or substitute for any official or primary source. This map was intended to meet National Map Accuracy Standards and use the most recent, accurate sources available to the people of the City of Novi. Boundary measurements and area calculations are approximate and should not be construed as survey measurements performed by a Licensed Michigan Surveyor as defined in Michigan Public Act 132 of 1970 as amended. Please contact the City GIS Manager to confirm source and accuracy information related to this map.